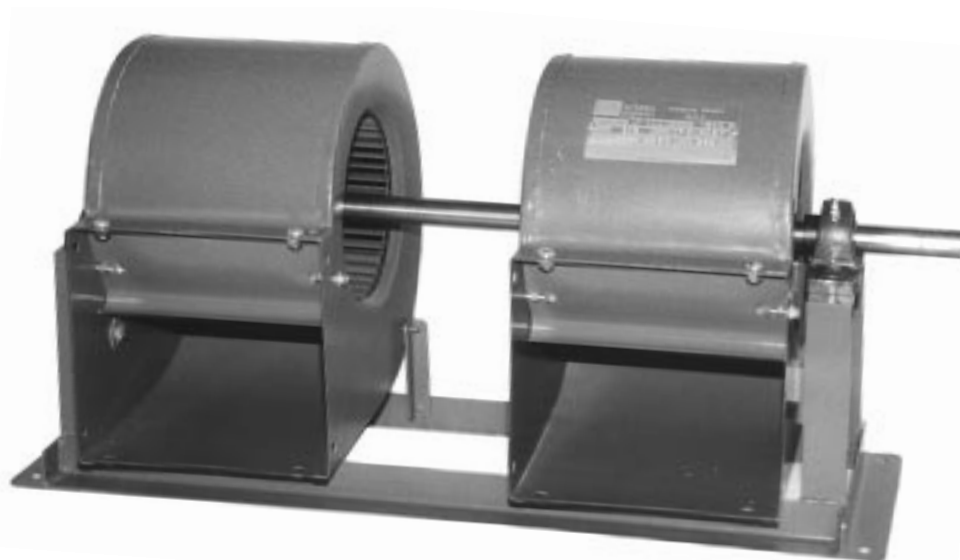


**FAN SERVICES
INCORPORATED™**

DF / DFB / DFC

DOUBLE WIDTH – DOUBLE INLET FORWARD CURVED FANS

**FOR ORIGINAL EQUIPMENT MANUFACTURES
SERIES 1600**





APPLICATIONS AND AVAILABLE TYPES

DF - DFB - DFC DOUBLE INLET FANS

DF centrifugal forward curved Fan Assemblies, Kits and Parts are designed to furnish original equipment manufacturers (OEM's) with low cost, efficient, dependable air handling components. Widely used and accepted throughout the industry, these fans are the standard of comparison for many applications including:

- Ovens & Dryers
- Heat Exchangers
- Heating & Ventilating Units
- Cooling Towers
- Air Conditioning Units
- Evaporative Condensers
- Finishing Systems
- Washers
- Orchard Spraying Equipment
- Centrifugal Unit Heaters
- Evaporative Coolers
- Air Curtains

DF fans furnish the original equipment manufacturer with the variety necessary to match all require-

ments.

A wide range of sizes are available with volumes from 150 to 88,000 CFM, static pressure to 8" w.g., and temperatures to 750°F with steel construction and 1000°F with stainless steel construction.

Fan parts and Kits suited for multiple arrangements or complete ready-to-install assemblies can be supplied to furnish maximum capacity in minimum space.

Many finishes and metals are available for protection against corrosive conditions.

All fans can be constructed from mill galvanized steel (standard), stainless steel, aluminum, monel (nickel-400) and other metals.

DF fans feature typically heavy DF Fan Services construction for assured performance and long trouble-free life. All fan wheels are balanced both statically and dynamically.

DOUBLE INLET FAN TYPES

Type DFB. For more compact installations — moderate outlet velocities — minimum shaft diameters.

- Centrifugal forward curved design for quiet operation.
- Double inlet wheels for single or multiple fan arrangements.
- Eleven standard sizes: 6-1/2" through 26" diameter.
- Typically lower efficiency than DFC.

Type DFC. Wider housing for low outlet velocity requirements — typically higher efficiency than type DFB.

- Centrifugal forward curved design for quiet operation.
- Double inlet wheels for single or multiple fan arrangements.
- Eleven standard sizes: 9-3/4" through 32-1/2" diameter.
- Wider housing than Type DFB, but same side view dimensions and fan wheel.

FAN ASSEMBLIES - KITS - PARTS

FAN PARTS — Components for assembly in customer's equipment: wheels and housings, wheels only, housing only, housing sides and cutoffs, cooling wheels, cooling cones, etc.

FAN KITS — Ready to assemble in customer's equipment including: wheels, housings, shafts, bearings, cooling wheels and cooling cones.

DFB - DFC UNITARY FAN ASSEMBLIES —

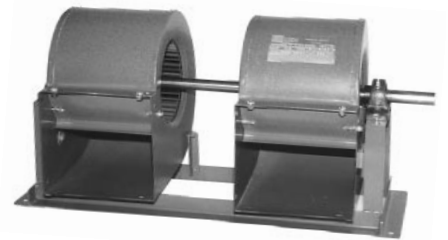
Complete fan assembly consisting of one (1) double inlet wheel, housing, steel shaft, cast iron pillowblock bearings, and painted steel frame. Available in all sizes of Type DFB Fans and DFC Fans for pressures to approximately 1-1/2" SP. Custom assemblies are available.

DFB - DFC DUPLEX FAN ASSEMBLIES —

Complete fan assembly consisting of two (2) double inlet wheels and housings on a common steel shaft, with cast iron pillowblock bearings, and a common painted steel frame. Size 2 Type DFB Duplex and sizes 1-3/4 through 2-1/2 Type DFC Duplex fan assemblies consist of two complete fans with shafts and frames, coupled with a flexible gear coupling. Custom assemblies are available.



DFB UNITARY ASSEMBLY



DFB DUPLEX ASSEMBLY

FEATURES OF CONSTRUCTION



DF WHEEL

DF WHEEL WITH REINFORCING RINGS AND BRACE RODS



Sizes 1/2 through 1-1/4 — 48 die formed blades either side of centerplate, with integral tenons on blade ends. Tenons project through slots in rims and centerplate and are staked in place.

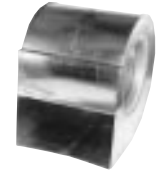
Sizes 1-3/8 through 2-1/2 — 60 die formed blades either side of centerplate (48 blades, sizes 1-3/8 and 1-1/2). Blades have flanged ends which are riveted to centerplate and rims.

Standard Hubs are cast iron, "Huck Bolted" to centerplate. Available in all English and metric bores, with or without keyway.

TYPE DFB HOUSING



TYPE DFC HOUSINGS



Size 3/4 thru 1-3/4

Size 2, 2-1/4, 2-1/2

Note: The Type DF forward curved blade wheel is used interchangeably in type DFB and DFC housings.

Standard Housings are fabricated from heavy gauge mill galvanized steel and spot welded together for long service and freedom from vibration. Inlets are die-formed or spun in housing sides. Wheels are inserted in housings through outlet. Housing design is based on laboratory tests for maximum efficiency compatible with compactness. Sizes 1/2 through 1-3/4 have scroll sheet spot welded to housing sides. Larger sizes employ a standing seam scroll joint spot welded to housing sides.

FINISHES AND SPECIAL METAL CONSTRUCTION

Standard Construction — Mill galvanized (zinc-grip) steel construction with cast iron hub. Maximum temperature 500° F.

High-Temperature Construction — Steel construction with cast iron hub, painted with one coat of black silicone based paint. Maximum temperature 750° F.

Spark Resistant Construction — Ferrous and non-ferrous metal combinations using aluminum, and monel to meet AMCA "A", "B", or "C" construction requirements.

Aluminum Construction — Available for wheels and housings for spark-resistant applications with either cast iron or aluminum hubs.

Stainless Steel Type 304/316 — Both wheels and housings are available for corrosive and/or high temperature applications. Maximum temperature 1000° F.

Monel (Nickel-400) Wheels and housings available. Monel wheels are also available for spark-resistant applications where pressure or temperature precludes use of aluminum.

TYPE UNI-COMBUSTION FANS*

Uni-Combustion fan assemblies and fan parts, incorporating SWSI centrifugal forward curve bladed wheels in fourteen (14) diameters from 6-1/2" through 32-1/2", are designed for industrial use, such as supplying combustion air for burner applications. Available in Arrangement 4. Complete assemblies and / or parts for incorporation into various systems. Inlet volumes from 200 to 24,000 CFM at static pressures to 10" W.G.



UC WHEEL



ARRANGEMENT 4U ASSEMBLY



ARRANGEMENT 4E ASSEMBLY

* ASK FOR BULLETIN 18001



UNITARY FAN SELECTION

FAN TYPE SELECTION

Type DFB — For slow speed, more compact, moderate outlet velocity requirements.

Type DFC — For slow speed, quiet, lower outlet velocity requirements, typically higher efficiencies.

SIZE SELECTION GUIDE

Static Pressure In. W.G.	Quietest Range for Air Handlers		Most Economical Range for Industrial Units		Fan Size	Outlet Area in sq. ft.	
	Min	Max	Min	Max		Type DFB	Type DFC
1/4	800	1600			1/2	0.36	
1/2	800	1700	1200	2200	5/8	0.53	
3/4	900	1800	1400	2400	3/4	0.88	1.04
1	900	2000	1600	2600	7/8	1.34	1.62
1 1/2	1000	2000	1800	2800	1	1.53	1.85
2	1100	2000	2000	3000	1 1/8	2.22	2.62
2 1/2	1200	2200	2100	3200	1 1/4	2.44	2.88
3	1300	2400	2200	3300	1 3/8	3.00	3.52
3 1/2	1600	2600	2300	3400	1 1/2	3.53	4.16
4	1800	2800	2500	3500	1 3/4	4.77	5.69
4 1/2	2000	3000	2600	3600	2	6.23	7.39
5	2200	3200	2800	3800	2 1/4		9.35
6	2400	3600	3000	4200	2 1/2		11.52

FAN SIZE SELECTION

The Size Selection Guide shows the normally used ranges over which DF Fans perform satisfactorily.

Example in use of Size Selection Guide — Select DF fans for a 2-fan air conditioning unit, having a volume rating of 6,600 to 9,000 CFM with total static pressures ranging from 1/2" to 2".

1. Since this is to be a 2-fan unit, each fan handles 3300 to 4500 CFM: average = 3900 CFM.
2. From Size Selection Guide at 2" SP for an AC Unit application, recommended OV = 1,100 to 2,000; Avg. = 1,550 ft./min.

3. Approximate required fan outlet area = $\frac{\text{Ave. CFM}}{\text{Ave. OV}} = \frac{3900}{1500} = 2.52 \text{ sq. ft.}$

4. From the Table of Outlet Areas listed in Selection Guide, the nearest selection would be a 1-1/8 DFC having an outlet area of 2.62 sq. ft.
5. Check the actual outlet velocities for the full desired range of volumes and pressures to see if these come within the recommended limits.

Min. Volume = 3,300/fan; OV = 1,260 - OK at max. 2" SP.
Max. Volume = 4,500/fan; OV = 1,720 - Just slightly above recommended max. of 1,700 at 1/2" SP.

NOTE: Other possible selections falling within recommended limits would be 1-1/8 DFB, or 1-1/4 DFB

FAN PERFORMANCE DETERMINATION

The capacity tables on pages 7 through 27 show performances for one double width, double inlet (DWDI) fan at standard air density (.075 lb./cu. ft.). When multiple fans are used in parallel, the CFM and BHP shown in the tables must be multiplied by the number of fans.

Approximate performance for single width, single inlet fans (SWSI) is obtained by dividing the CFM and BHP shown in the capacity tables by 2.

When air density is other than standard, correction must be made to the performance shown in the capacity tables.

Where CFM and SP are specified at other than standard density, the specified static pressures must be multiplied by the density factor to obtain the equivalent SP. Equivalent SP and specified CFM are then used to enter the capacity tables to obtain RPM and equivalent BHP. BHP at the specified density equals equivalent BHP divided by density factor.

Density factors are shown in the following table. Combined density factor for temperatures and elevation is obtained by multiplication of the separate factors.

DENSITY FACTORS

Temp °F.	Dens. Factor	Temp °F.	Dens. Factor	Temp °F.	Dens. Factor	Temp °F.	Dens. Factor	Elev. Ft.	Dens. Factor	Temp °F.	Density factor at % Relative Humidity			
											25%	50%	75%	100%
-75	0.726	125	1.104	325	1.481	525	1.859	0	1.000	70	1.003	1.005	1.007	1.010
-50	0.774	150	1.151	350	1.528	550	1.906	1000	1.037	100	1.062	1.071	1.077	1.083
-25	0.821	175	1.198	375	1.576	575	1.953	2000	1.076	125	1.118	1.133	1.147	1.162
0	0.868	200	1.245	400	1.623	600	2.000	3000	1.116	150	1.181	1.210	1.242	1.272
25	0.915	225	1.293	425	1.670	625	2.050	4000	1.158	175	1.253	1.312	1.379	1.445
50	0.962	250	1.340	450	1.717	650	2.090	5000	1.202	200	1.344	1.461	1.597	1.752
70	1.000	275	1.387	475	1.764	675	2.140	6000	1.248					
100	1.057	300	1.434	500	1.811	700	2.190	7000	1.296					

EXAMPLE: Compute the performance of a size 1-3/8 type DFB DWDI duplex fan at 10,000 CFM, 1" SP at 200° F, 5,000 ft. elevation:

1. Density factor for 200° F and 5,000 ft. altitude = 1.245 x 1.202 = 1.496 (round to 1.5)
2. Equiv. SP = SP at specified condition x Density Factor = 1.0" x 1.5 = 1.5"
3. From Capacity Table, page 13, for 10,000 CFM and 1.5" Equiv. SP, we find that RPM = 711 and Equiv. BHP = 4.15.

BHP at specified condition = $\frac{\text{Equiv. BHP}}{\text{Dens Factor}} = \frac{4.15}{1.5} = 2.77$

For high temperature drying or for evaporative applications, Density Factor may be computed as follows:

1. Humidity Ratio (W) = $\frac{\text{Lbs. Water / Hr. Evaporated}}{\text{CFM at Std. Conditions} \times 4.5}$
2. Density at Condition (lbs/cu. ft.) = $\frac{(1 + W)}{(13.33 + 21.4 W)} \times \frac{1}{\text{Dens. Factors for Temp}} \times \frac{1}{\text{Dens. Factor for Elev.}}$

Where (W) is from (1) and Density Factors for Temperature and Elevation are from above table.

3. Density Factor = $\frac{.075 \text{ lbs. / cu. ft.}}{\text{Density at Conditions}}$ Total CFM at Condition = $\frac{(\text{CFM at std. conditions} \times 4.5) + (\text{lbs. water / hr. evaporated})}{\text{Density at Condition} \times 60}$

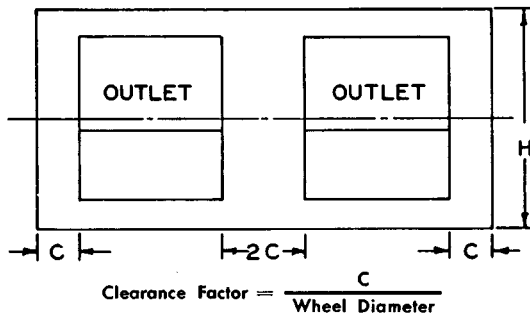
DF - DFB - DFC FAN SELECTION



CORRECTION TO FAN PERFORMANCE FOR AXIAL CLEARANCE IN ENCLOSURE

Where fans are crowded within housed enclosures, so that the air flow space between fan housing and enclosure is less than one wheel diameter, fan performance is reduced from that shown in the capacity tables. Correction must be made by multiplying the Capacity Table values by the factors shown in the following table.

FAN CAPACITY MULTIPLIERS For Various Clearance Factors		
Clearance Factor	RPM	BHP
1.0	1.0	1.0
.9	1.02	1.03
.8	1.03	1.05
.7	1.05	1.07
.6	1.06	1.08
.5	1.07	1.09
.4	1.08	1.11



Where Height (H) exceeds 2-1/2 wheel diameters, the indicated increase in RPM and BHP due to clearance will be 1/2 that shown in table; i.e. 1.07 becomes 1.035, etc.

The above factors give average values; for precise ratings it is recommended that the complete air handling cabinet be tested in accordance with the AMCA Standards.

MAXIMUM SPEEDS & TEMPERATURE CONDITIONS For Steel Wheels and Steel Shafts			
Temp. Range °F.	Type DF — Max. Fan Wheel Tip Speed — ft./min.		
	Size 1/2 - 1 3/4 Without Rings	Sizes 2 - 2 1/2	
		Without Rings	With Rings
Up to 300	8100	7000	8100
301 - 600	7500	6500	7500
601 - 750	6000	5500	6000

Max. Wheel RPM = $\frac{\text{Max. Tip Speed}}{\text{Wheel Circum.}}$

Max. Temperature for complete standard fans = 150° F.

Max. Temperature for standard wheels and housings = 500° F.

FAN MOTORS

Where motors larger than 30 HP are used across the line, NEMA design B (part winding) motors are recommended.

Each fan wheel in multiple wheel installations will withstand starting and running torques of motors of above characteristics when the fan speed and horsepower for each wheel are not in excess of the values shown in the capacity tables for the particular design wheel involved.

Extreme care must be used in multiple installations to provide ample shaft and supporting structure to accommodate greater torque and side pull of the drive caused by the larger motors. These forces are particularly severe when motors are started across the line.

BEARING COOLING WHEELS

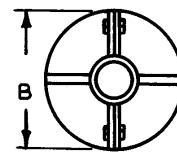
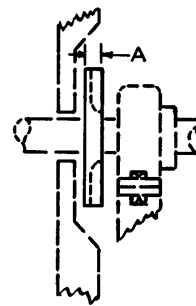
A cooling wheel should ordinarily be used with each external bearing on units operating over 300° F., to dissipate conducted and radiated heat away from the bearings. DF Fan cooling wheels are split type, cast aluminum for easy assembly and maintenance.



COOLING CONE



COOLING WHEEL

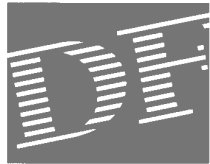


Bore	A	B
1" to 1-11/16"	13/16"	6-1/2"
1-3/4" to 2-15/16"	13/16"	8-1/4"
3" to 3-15/16"	1 3/8"	12"

MISCELLANEOUS NOTES

Where direct fired heaters are used, provision for adequate mixing of the high temperature output must be made in order to avoid fan, shaft and bearing damage.

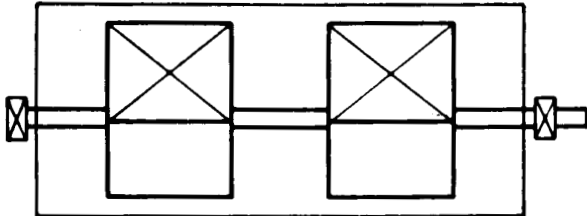
High temperature limit controls in direct fired installations should be located in the fan inlet air stream. High temperature units should be run until the internal temperature drops to 200° F. on shut-off to prevent shaft sag or runout.



INSTALLATION ARRANGEMENTS

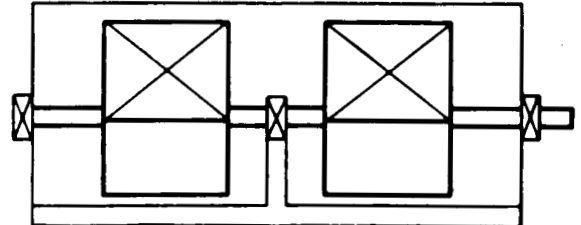
TWO FAN ARRANGEMENTS

Bearings Outside Casing



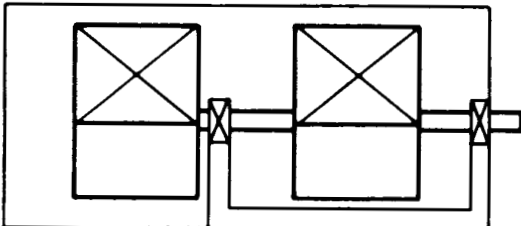
300°F max. without air cooled brgs. 750°F max. with air cooled brgs. For low and medium pressures.

3 Bearings — One Internal



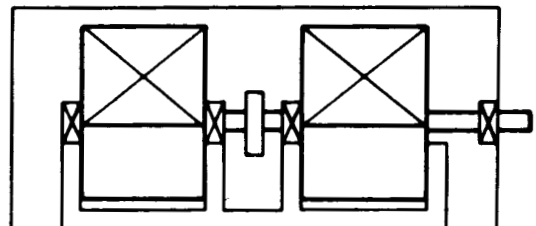
Max. temp. dependent on bearings and lubricant. Approx. 200°F. For low and medium pressures.

Internal Bearings — 1 Wheel overhung



Max. temp. dependent on bearings and lubricant. Approx. 200°F. For low and medium pressures.

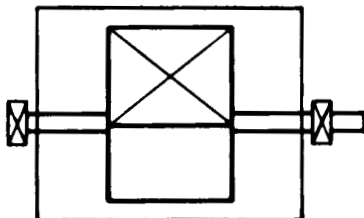
Internal Bearings — Fans Coupled



Max. temp. dependent on bearings and lubricant. Approx. 200°F. For low and medium pressures.

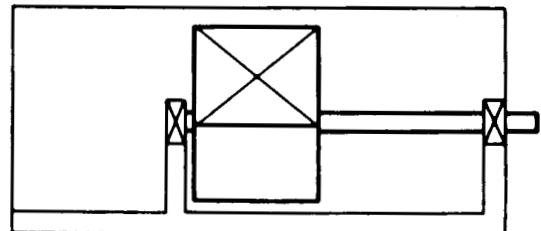
SINGLE FAN ARRANGEMENTS

Bearings Outside Casing



300°F max. without air cooled brgs. 750°F max. with air cooled brgs. For low and medium pressures.

Internal Bearings



Max. temp. dependent on bearings and lubricant. Approx. 200°F. For medium and high pressures.

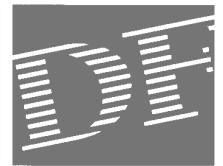
Flanged bearings mounted on casing are not recommended for temperatures over 200°F.

LIMITATIONS OF DF STANDARD COMPLETE FANS (TYPES DF, DFB, AND DFC)

DUPLIX FANS		
Size	Ball Bearing	
	Max RPM	Max Motor HP
1/2	2900	1.5
5/8	2400	2
3/4	1750	3
7/8	1450	3
1	1450	5
1 1/8	1150	5
1 1/4	1100	5
1 3/8	1100	7.5
1 1/2	850	10
1 3/4	800	10
2	700	15
2 1/4	600	20
2 1/2	550	25

SINGLE UNITARY FANS		
Size	Ball Bearing	
	Max RPM	Max Motor HP
1/2	2900	1
5/8	2400	1.5
3/4	2000	2
7/8	1550	3
1	1450	5
1 1/8	1200	5
1 1/4	1150	5
1 3/8	1100	5
1 1/2	900	5
1 3/4	800	7.5
2	700	10
2 1/4	600	15
2 1/2	500	20

PERFORMANCE TABLES - DF, DFB & DFC



The following performance tables are based on separate tests run on single unitary and duplex arrangements (except sizes 1/2 and 5/8). Tests are per AMCA Bulletin 210 and duplex tests are based on fans not closer than indicated on page 5 of this catalog.

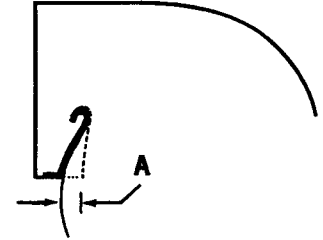
All ratings are for free standing fans. When used in enclosures, table values must be de-rated. De-rating values should be obtained from tests per AMCA Bulletin 211A, or can be estimated from chart on page 5 of this catalog.

CUT-OFF ADJUSTMENT - TYPES DFB & DFC DUPLEX FANS

Some sizes of DFB & DFC Duplex fans exhibit unstable tendencies when operated at low volume - pressure ratios. This may result in unequal air deliveries where each fan is connected to a separate duct system.

This condition may be corrected by moving the heel of the cut-off in towards the wheel "A" inches.

SIZE	A	SIZE	A
7/8	1 1/16"	2	1 5/8"
1	1 3/16"	2 1/4	1 13/16"
1 1/8	7/8"	2 1/2	2"
1 1/4	1"		



SIZE 1/2 — DF TYPE DFB UNITARY FAN — SINGLE FAN*

OUTLET AREA = .36 SQ. FT.

WHEEL BLADE DIA. = 6 1/2"

TIP SPEED = RPM x 1.70

STD. BALANCE RPM: 3600

Volume of Air CFM	Outlet Velocity FMP	1/4" SP		1/2" SP		3/4" SP		1" SP		1 1/4" SP		1 1/2" SP		1 3/4" SP		2" SP		2 1/2" SP		3" SP	
		RPM	BHP	RPM	BHP	RPM	BHP	RPM	BHP	RPM	BHP	RPM	BHP	RPM	BHP	RPM	BHP	RPM	BHP	RPM	BHP
288	800	843	.02	1182	.04	1488	.06	1730	.09												
324	900	867	.02	1172	.05	1470	.01	1725	.10	1935	.12										
360	1000	897	.03	1176	.05	1447	.08	1109	.11	1926	.13	2115	.16	2288	.20						
396	1100	932	.03	1188	.06	1438	.08	1685	.11	1910	.14	2106	.18	2288	.21	2448	.24				
432	1200	971	.04	1209	.06	1439	.09	1667	.12	1889	.16	2093	.19	2277	.22	2445	.26	2730	.34		
468	1300	1013	.05	1235	.07	1446	.10	1656	.13	1866	.17	2072	.20	2261	.24	2439	.28	2732	.36	2980	.44
504	1400	1058	.06	1263	.08	1464	.11	1659	.14	1854	.18	2048	.22	2237	.25	2421	.29	2729	.38	2990	.46
540	1500	1104	.07	1296	.09	1487	.12	1671	.16	1851	.19	2033	.23	2213	.27	2393	.31	2717	.40	2985	.49
576	1600	1152	.08	1335	.10	1515	.13	1688	.17	1859	.21	2030	.24	2196	.28	2363	.33	2694	.42	2975	.51
648	1800	1248	.10	1418	.13	1578	.16	1733	.20	1887	.24	2040	.28	2193	.32	2343	.37	2642	.46	2940	.56
720	2000	1346	.13	1506	.16	1652	.20	1796	.24	1935	.27	2075	.32	2214	.36	2354	.41	2627	.51	2893	.62
792	2200	1446	.16	1599	.20	1731	.24	1865	.28	1997	.32	2124	.36	2250	.41	2378	.46	2630	.56	2875	.68
864	2400	1548	.20	1694	.24	1818	.29	1943	.33	2064	.38	2184	.42	2301	.46	2417	.51	2648	.62	2789	.74
936	2600	1652	.25	1791	.30	1910	.34	2027	.39	2139	.44	2250	.48	2361	.53	2471	.58	2682	.69	2892	.80
1008	2800	1757	.31	1890	.36	2004	.40	2115	.45	2220	.50	2324	.55	2427	.61	2529	.66	2730	.77	2928	.88
1080	3000			1996	.42	2106	.46	2208	.52	2304	.58	2400	.64	2496	.68	2592	.72	2184	.85	2974	.06
1152	3200															2662	.80	2848	.94	3030	1.04
1224	3400																			3093	1.16

(ALL CAPACITIES BASED ON STANDARD AIR (DENSITY .075# / CU. FT. - 70°F. - 29.29" HG. BAR.)

SIZE 5/8 — DF TYPE DFB UNITARY FAN — SINGLE FAN*

OUTLET AREA = .53 SQ. FT.

WHEEL BLADE DIA. = 8 1/8"

TIP SPEED = RPM x 2.13

STD. BALANCE RPM: 2850

MAX. RPM WITH REINFORCEMENT: 3600

Volume of Air CFM	Outlet Velocity FMP	1/4" SP		1/2" SP		3/4" SP		1" SP		1 1/4" SP		1 1/2" SP		1 3/4" SP		2" SP		2 1/2" SP		3" SP	
		RPM	BHP	RPM	BHP	RPM	BHP	RPM	BHP	RPM	BHP	RPM	BHP	RPM	BHP	RPM	BHP	RPM	BHP	RPM	BHP
424	800	672	.03	943	.06	1187	.09	1378	.13												
477	900	692	.04	935	.07	1173	.10	1377	.14	1545	.18										
530	1000	716	.04	938	.07	1151	.11	1364	.15	1537	.29	1687	.24	1825	.29						
583	1100	744	.05	948	.08	1148	.12	1343	.17	1526	.21	1881	.26	1825	.31	1953	.36				
636	1200	775	.06	965	.09	1148	.13	1330	.18	1508	.23	1670	.27	1817	.33	1951	.38	2179	.50		
689	1300	808	.07	986	.11	1194	.15	1322	.19	1489	.24	1654	.29	1804	.35	1947	.41	2180	.52	2380	.65
742	1400	844	.08	1009	.12	1169	.16	1324	.21	1479	.26	1635	.31	1787	.37	1932	.43	2177	.55	2385	.68
795	1500	881	.10	1034	.14	1186	.18	1334	.23	1478	.28	1623	.33	1766	.39	1910	.45	2168	.58	2382	.71
848	1600	919	.11	1066	.15	1209	.20	1346	.25	1482	.30	1620	.36	1753	.42	1887	.48	2150	.61	2375	.75
954	1800	995	.15	1132	.19	1260	.24	1383	.29	1506	.35	1628	.41	1750	.47	1870	.54	2105	.68	2347	.82
1060	2060	1073	.19	1202	.24	1318	.29	1433	.35	1542	.40	1652	.46	1764	.53	1878	.60	2006	.75	2303	.90
1166	2200	1154	.24	1276	.29	1382	.35	1489	.41	1593	.47	1694	.53	1795	.60	1897	.67	2099	.82	2295	.98
1272	2400	1236	.30	1353	.36	1450	.42	1550	.48	1647	.55	1743	.61	1836	.68	1929	.75	2112	.90	2296	1.07
1378	2600	1318	.37	1430	.43	1524	.50	1617	.57	1707	.64	1796	.71	1884	.78	1972	.85	2140	1.00	2309	1.17
1484	2800	1401	.45	1508	.52	1599	.59	1687	.66	1772	.73	1854	.81	1936	.89	2019	.96	2179	1.12	2338	1.28
1590	3000			1588	.62	1683	.69	1762	.77	1838	.85	1918	.93	1988	1.01	2072	1.08	2220	1.26	2372	1.42
1696	3200															2132	1.25	2274	1.42	2418	1.57
1802	3400																			2476	1.74

(ALL CAPACITIES BASED ON STANDARD AIR (DENSITY .075# / CU. FT. - 70°F. - 29.29" HG. BAR.)

* ON SIZES 1/2 AND 5/8, ESTIMATE DUPLEX PERFORMANCE BY MULTIPLYING CFM AND BHP BY 2.

SIZE 3/4 — DF TYPE DFB UNITARY FAN — SINGLE FAN

OUTLET AREA = .88 SQ. FT. WHEEL BLADE DIA. = 9 3/4" TIP SPEED = RPM x 2.55 STD. BALANCE RPM: 2400 MAX. RPM WITH REINFORCEMENT: 3450

Volume of Air CFM	1/2" SP		3/4" SP		1" SP		1 1/4" SP		1 1/2" SP		2" SP		2 1/2" SP		3" SP		3 1/2" SP		4" SP		5" SP		6" SP		7" SP		8" SP		
	RPM	BHP	RPM	BHP	RPM	BHP	RPM	BHP	RPM	BHP	RPM	BHP	RPM	BHP	RPM	BHP	RPM	BHP	RPM	BHP	RPM	BHP	RPM	BHP	RPM	BHP	RPM	BHP	
700	758	0.09	948	0.15																									
800	909	0.11	931	0.16	1096	0.23																							
900	1020	0.13	929	0.18	1078	0.24	1224	0.32																					
1000	1140	0.15	939	0.20	1072	0.27	1206	0.34	1338	0.42																			
1100	1250	0.18	959	0.23	1077	0.30	1198	0.37	1321	0.45																			
1200	1360	0.21	985	0.27	1092	0.33	1201	0.40	1313	0.48	1536	0.66																	
1300	1480	0.25	1016	0.31	1115	0.37	1214	0.44	1315	0.52	1521	0.70	1708	0.95															
1400	1590	0.29	1049	0.35	1142	0.42	1234	0.49	1326	0.57	1516	0.75	1708	0.95	1876	1.23													
1500	1700	0.34	1083	0.41	1172	0.48	1258	0.55	1344	0.63	1518	0.80	1697	1.01	1876	1.23													
1700	1930	0.45	1155	0.52	1239	0.60	1318	0.68	1394	0.76	1546	0.94	1699	1.14	1857	1.37	2015	1.61											
1900	2160		1229	0.67	1311	0.75	1385	0.84	1456	0.93	1593	1.11	1728	1.31	1865	1.53	2005	1.78	2146	2.04									
2100	2390		1304	0.84	1384	0.93	1456	1.03	1524	1.12	1651	1.32	1774	1.53	1896	1.75	2020	1.99	2146	2.25	2402	2.83							
2300	2610				1458	1.14	1529	1.25	1595	1.35	1717	1.56	1831	1.78	1943	2.01	2055	2.25	2168	2.51	2397	3.07	2631	3.71					
2500	2840						1604	1.50	1668	1.61	1786	1.84	1896	2.07	2000	2.31	2103	2.55	2206	2.81	2413	3.38	2625	4.01	2840	4.70			
2700	3070						1679	1.79	1742	1.91	1858	2.16	1964	2.40	2064	2.65	2160	2.90	2256	3.17	2446	3.74	2639	4.37	2836	5.05	3035	5.80	
2900	3300								1817	2.25	1931	2.51	2035	2.77	2131	3.04	2224	3.30	2314	3.58	2491	4.16	2669	4.78	2849	5.46	3032	6.20	
3100	3520										2005	2.91	2107	3.19	2201	3.47	2291	3.75	2377	4.04	2545	4.63	2710	5.26	2877	5.94	3046	6.68	
3300	3750										2080	3.35	2180	3.64	2273	3.94	2361	4.24	2444	4.54	2605	5.16	2761	5.81	2916	6.49	3073	7.22	
3500	3980												2255	4.15	2346	4.47	2432	4.78	2514	5.10	2669	5.74	2818	6.41	2965	7.10	3112	7.84	
3700	4200												2330	4.71	2420	5.04	2505	5.38	2585	5.71	2736	6.38	2880	7.07	3020	7.78	3159	8.53	

(ALL CAPACITIES BASED ON STANDARD AIR (DENSITY .075# / CU. FT. - 70°F. - 29.29" HG. BAR.))

SIZE 3/4 — DF TYPE DFB DUPLEX FAN — DOUBLE FAN

OUTLET AREA = 1.76 SQ. FT. WHEEL BLADE DIA. = 9 3/4" TIP SPEED = RPM x 2.55 STD. BALANCE RPM: 2400 MAX. RPM WITH REINFORCEMENT: 3450

Volume of Air CFM	1/2" SP		3/4" SP		Outlet 1" SP		1 1/4" SP		1 1/2" SP		2" SP		2 1/2" SP		3" SP		3 1/2" SP		4" SP		5" SP		6" SP		7" SP		8" SP		
	RPM	BHP	RPM	BHP	RPM	BHP	RPM	BHP	RPM	BHP	RPM	BHP	RPM	BHP	RPM	BHP	RPM	BHP	RPM	BHP	RPM	BHP	RPM	BHP	RPM	BHP	RPM	BHP	
1400	805	0.22	996	0.33	1150	0.51																							
1600	909	0.24	991	0.37	1146	0.56	1286	0.72																					
1800	1020	0.27	982	0.41	1138	0.62	1281	0.78	1408	0.95																			
2000	1140	0.32	972	0.45	1127	0.67	1274	0.85	1403	1.04																			
2200	1250	0.37	971	0.50	1120	0.72	1263	0.91	1396	1.11	1624	1.52																	
2400	1360	0.44	983	0.56	1124	0.79	1254	0.98	1385	1.19	1619	1.63	1813	2.20															
2600	1480	0.52	1005	0.64	1138	0.88	1253	1.06	1376	1.27	1610	1.73	1806	2.33	1988	2.84													
2800	1590	0.61	1033	0.74	1160	0.99	1262	1.16	1372	1.36	1600	1.83																	
3000	1700	0.71	1066	0.84	1220	1.25	1303	1.41	1391	1.60	1584	2.05	1786	2.59	1974	3.16	2143	3.73											
3400	1930	0.94	1137	1.09	1290	1.57	1364	1.74	1438	1.93	1596	2.35	1772	2.87	1953	3.46	2125	4.09	2284	4.73									
3800	2160		1212	1.40	1364	1.96	1433	2.14	1500	2.33	1635	2.75	1781	3.23	1940	3.81	2105	4.45	2265	5.14	2556	6.54							
4200	2390		1289	1.77																									
4600	2610				1440	2.40	1507	2.61	1570	2.81	1692	3.24	1817	3.71	1951	4.25	2096	4.87	2246	5.56	2537	7.06	2800	8.60					
5000	2840				1583	3.15	1583	3.15	1643	3.37	1758	3.82	1870	4.29	1986	4.81	2110	5.40	2241	6.06	2517	7.58	2782	9.22	3023	10.90			
5400	3070				1660	3.76			1719	4.01	1829	4.49	1933	4.98	2037	5.49	2145	6.06	2259	6.69	2505	8.15	2761	9.84	3005	11.62			
5800	3300								1796	4.72	1903	5.24	2002	5.76	2098	6.29	2196	6.85	2296	7.46	2512	8.85	2746	10.50	2983	12.34			
6200	3520										1918	6.09	2074	6.64	2166	7.20	2256	7.77	2347	8.37	2539	9.72	2747	11.29	2967	13.10			
6600	3750										2055	7.03	2149	7.62	2237	8.21	2323	8.80	2407	9.42	2581	10.74	2766	12.25	2965	13.99			
7000	3980												2225	8.70	2311	9.33	2393	9.95	2473	10.58	2634	11.91	2801	13.39	2979	15.05			
7400	4200												2301	9.89	2386	10.56	2466	11.21	2543	11.87	2695	13.23	2848	14.69	3009	16.31			

(ALL CAPACITIES BASED ON STANDARD AIR (DENSITY .075# / CU. FT. - 70°F. - 29.29" HG. BAR.))

SIZE 7/8 — DF TYPE DFB UNITARY FAN — SINGLE FAN

OUTLET AREA = 1.34 SQ. FT. WHEEL BLADE DIA. = 11 3/8" TIP SPEED = RPM x 2.98 STD. BALANCE RPM: 2025 MAX. RPM WITH REINFORCEMENT: 3450

Volume of Air CFM	1/2" SP		3/4" SP		1" SP		1 1/4" SP		1 1/2" SP		2" SP		2 1/2" SP		3" SP		3 1/2" SP		4" SP		5" SP		6" SP		7" SP		8" SP		
	RPM	BHP	RPM	BHP	RPM	BHP	RPM	BHP	RPM	BHP	RPM	BHP	RPM	BHP	RPM	BHP	RPM	BHP	RPM	BHP	RPM	BHP	RPM	BHP	RPM	BHP	RPM	BHP	
1000	640	0.13																											
1200	658	0.16	783	0.24	912	0.32	1015	0.46																					
1400	691	0.21	797	0.28	905	0.37	1015	0.46																					
1600	732	0.27	826	0.35	918	0.43	1013	0.52	1109	0.63																			
1800	776	0.34	863	0.42	946	0.51	1028	0.61	1111	0.71	1282	0.95																	
2000	821	0.43	905	0.52	981	0.61	1055	0.71	1129	0.81	1280	1.05	1434	1.32															
2200	867	0.53	949	0.63	1022	0.73	1090	0.83	1157	0.94	1292	1.17	1430	1.44	1567	1.88													
2400	914	0.65	994	0.76	1065	0.86	1130	0.97	1193	1.08	1315	1.32	1440	1.59	1575	2.06	1692	2.38											
2600	962	0.79	1040	0.90	1109	1.02	1172	1.13	1232	1.25	1346	1.49	1460	1.76	1575	2.06	1692	2.38											
2800	2090		1087	1.07	1155	1.19	1216	1.31	1274	1.44	1382	1.70	1488	1.97	1594	2.26	1701	2.58	1810	2.93									
3000	2240		1134	1.25	1200	1.39	1261	1.52	1317	1.65	1422	1.92	1522	2.20	1620	2.50	1719	2.82	1819	3.17	2023	3.93							
3200	2390		1182	1.46	1247	1.60	1307	1.74	1362	1.89	1464	2.17	1559	2.46	1652	2.77	1744	3.09	1836	3.44	2025	4.19							
3400	2540				1294	1.85	1353	2.00	1407	2.15	1507	2.45	1599	2.75	1688	3.07	1774	3.40	1861	3.74	2037	4.50	2216	5.34					
3600	2690				1342	2.11	1399	2.27	1453	2.43	1551	2.75	1641	3.07	1727	3.40	1809	3.73	1891	4.09	2056	4.84	2223	5.68					
3800	2840						1446	2.58	1499	2.75	1596	3.08	1685	3.42	1768	3.76	1847	4.11	1925	4.47	2081	5.23	2237	6.06	2397	6.97			
4000	2990						1494	2.91	1546	3.09	1642	3.44	1729	3.79	1810	4.15	1887	4.51	1963	4.88	2111	5.66	2258	6.49	2408	7.40	2560	8.38	
4400	3280								1641	3.86	1734	4.25	1819	4.64	1898	5.03	1972	5.42	2044	5.82	2181	6.63	2315	7.48	2449	8.39	2585	9.37	
4800	3580										1828	5.20	1911	5.62	1988	6.05	2061	6.47	2129	6.90	2260	7.76	2385	8.65	2508	9.58	2631	10.56	
5200	3880										1924	6.29	2004	6.75	2080	7.21	2151	7.67	2218	8.13	2345	9.05	2464	9.99	2579	10.96	2693	11.96	
5600	4180												2099	8.04	2173	8.53	2243	9.03	2309	9.52	2432	10.51	2548	11.51	2658	12.52			

(ALL CAPACITIES BASED ON STANDARD AIR DENSITY .075# / CU. FT. - 70°F. - 29.29" HG. BAR.)

SIZE 7/8 — DF TYPE DFB DUPLEX FAN — DOUBLE FAN

OUTLET AREA = 2.68 SQ. FT. WHEEL BLADE DIA. = 11 3/8" TIP SPEED = RPM x 2.98 STD. BALANCE RPM: 2025 MAX. RPM WITH REINFORCEMENT: 3450

Volume of Air CFM	1/2" SP		3/4" SP		1" SP		1 1/4" SP		1 1/2" SP		2" SP		2 1/2" SP		3" SP		3 1/2" SP		4" SP		5" SP		6" SP		7" SP		8" SP		
	RPM	BHP	RPM	BHP	RPM	BHP	RPM	BHP	RPM	BHP	RPM	BHP	RPM	BHP	RPM	BHP	RPM	BHP	RPM	BHP	RPM	BHP	RPM	BHP	RPM	BHP	RPM	BHP	
2000	676	0.30																											
2400	668	0.35	829	0.53	957	0.83	1079	1.05																					
2800	685	0.43	818	0.61	945	0.93	1067	1.18	1179	1.44	1363	2.16																	
3200	720	0.55	826	0.72	945	1.07	1057	1.31	1166	1.58	1352	2.36	1514	3.26	1659	4.27	1791	5.39	1914	6.62									
3600	763	0.70	852	0.87	949	1.07	1061	1.48	1157	1.74	1352	2.36	1514	3.26	1659	4.27	1791	5.39	1914	6.62									
4000	808	0.89	890	1.06	972	1.25	1061	1.48	1157	1.74	1352	2.36	1514	3.26	1659	4.27	1791	5.39	1914	6.62									
4400	855	1.10	933	1.29	1006	1.48	1081	1.70	1162	1.95	1340	2.56	1514	3.26	1659	4.27	1791	5.39	1914	6.62									
4800	903	1.35	978	1.55	1047	1.76	1114	1.98	1183	2.22	1336	2.80	1501	3.50	1646	4.56	1791	5.39	1914	6.62									
5200	952	1.63	1025	1.86	1091	2.08	1153	2.31	1215	2.55	1347	3.10	1494	3.78	1646	4.56	1791	5.39	1914	6.62									
5600	2090		1073	2.21	1136	2.45	1195	2.69	1253	2.93	1370	3.48	1498	4.12	1637	4.88	1778	5.73	1914	6.62									
6000	2240		1121	2.60	1183	2.86	1240	3.12	1295	3.37	1402	3.92	1515	4.54	1638	5.27	1769	6.11	1901	7.02	2148	8.94							
6400	2390		1170	3.03	1231	3.32	1287	3.59	1339	3.87	1440	4.43	1542	5.04	1651	5.74	1768	6.54	1891	7.44	2135	9.43							
6800	2540				1279	3.82	1334	4.12	1385	4.41	1481	5.00	1576	5.62	1674	6.30	1779	7.07	1890	7.93	2122	9.93	2346	12.08					
7200	2690				1327	4.38	1381	4.70	1432	5.01	1525	5.63	1614	6.26	1705	6.94	1799	7.69	1899	8.52	2114	10.47	2332	12.67					
7600	2840						1430	5.34	1479	5.67	1570	6.32	1656	6.98	1740	7.67	1827	8.40	1917	9.21	2113	11.08	2321	13.28	2525	15.66			
8000	2990						1478	6.03	1527	6.39	1616	7.08	1700	7.55	1780	8.47	1861	9.20	1944	10.00	2121	11.81	2314	13.95	2512	16.36	2704	18.89	
8400	3280								1623	8.01	1711	8.79	1791	9.55	1866	10.30	1939	11.07	2012	11.86	2163	13.60	2325	15.61	2499	17.92	2679	20.50	
9600	3580										1807	10.77	1884	11.61	1957	12.43	2026	13.25	2093	14.09	2227	15.83	2367	17.76	2515	19.94	2672	22.40	
10400	3880										1904	13.04	1980	13.97	2050	14.88	2117	15.77	2181	16.66	2305	18.47	2430	20.39	2558	22.49	2694	24.81	
11200	4180												2076	16.65	2146	17.65	2211	18.62	2273	19.58	2391	21.50	2506	23.48	2621	25.56			

(ALL CAPACITIES BASED ON STANDARD AIR DENSITY .075# / CU. FT. - 70°F. - 29.29" HG. BAR.)

SIZE 1 — DF TYPE DFB UNITARY FAN — SINGLE FAN

OUTLET AREA = 1.53 SQ. FT. WHEEL BLADE DIA. = 13" TIP SPEED = RPM x 3.41 STD. BALANCE RPM: 1800 MAX. RPM WITH REINFORCEMENT: 2375

Volume of Air CFM	1/2" SP		3/4" SP		1" SP		1 1/4" SP		1 1/2" SP		2" SP		2 1/2" SP		3" SP		3 1/2" SP		4" SP		5" SP		6" SP		7" SP		8" SP			
	RPM	BHP	RPM	BHP	RPM	BHP	RPM	BHP	RPM	BHP	RPM	BHP	RPM	BHP	RPM	BHP	RPM	BHP	RPM	BHP	RPM	BHP	RPM	BHP	RPM	BHP	RPM	BHP	RPM	BHP
1200	571	0.15	717	0.25																										
1400	574	0.18	701	0.27	827	0.38																								
1600	589	0.22	699	0.31	811	0.42	921	0.54																						
1800	612	0.26	708	0.35	806	0.46	906	0.59	1004	0.72																				
2000	639	0.32	726	0.41	812	0.52	901	0.64	991	0.78																				
2200	1440	0.38	749	0.48	827	0.59	906	0.71	987	0.85	1150	1.15																		
2400	699	0.46	776	0.56	848	0.68	920	0.80	993	0.93	1141	1.24	1290	1.59																
2600	730	0.55	805	0.66	873	0.77	939	0.90	1005	1.03	1141	1.33	1279	1.68	1416	2.07														
2800	1830	0.64	835	0.76	900	0.89	962	1.01	1024	1.15	1147	1.45	1274	1.80	1403	2.18	1530	2.60												
3000	1960	0.75	865	0.88	929	1.01	988	1.15	1046	1.28	1161	1.59	1277	1.93	1397	2.31	1517	2.73	1635	3.18										
3200	2090		896	1.01	959	1.15	1016	1.29	1071	1.44	1179	1.74	1287	2.08	1397	2.46	1509	2.88	1622	3.33										
3400	2220		927	1.16	989	1.30	1045	1.45	1098	1.60	1200	1.92	1301	2.26	1404	2.64	1508	3.05	1614	3.50										
3600	2350		959	1.32	1020	1.47	1075	1.63	1127	1.79	1225	2.11	1320	2.46	1416	2.84	1513	3.25	1612	3.69	1812	4.68								
4000	2610				1083	1.86	1137	2.03	1186	2.20	1279	2.56	1366	2.92	1452	3.30	1538	3.72	1625	4.16	1802	5.13	1982	6.22	1974	6.77	2138	7.96		
4400	2880						1199	2.50	1248	2.69	1337	3.08	1419	3.46	1499	3.87	1577	4.29	1655	4.73	1813	5.69	1974	6.77	1974	6.77	2138	7.96		
4800	3140								1310	3.26	1398	3.68	1477	4.09	1552	4.52	1625	4.96	1697	5.41	1840	6.38	1985	7.45	1985	7.45	2133	8.62	2283	9.89
5200	3400								1374	3.91	1459	4.36	1537	4.81	1610	5.27	1679	5.73	1746	6.20	1878	7.19	2011	8.26	2011	8.26	2145	9.42	2281	10.68
5600	3660										1522	5.14	1598	5.62	1669	6.11	1736	6.60	1800	7.09	1925	8.12	2047	9.20	2047	9.20	2170	10.36	2295	11.61
6000	3920										1586	6.01	1661	6.53	1730	7.05	1796	7.57	1858	8.10	1977	9.16	2092	10.28	2092	10.28	2206	11.45	2321	12.70
6400	4180												1724	7.54	1792	8.10	1856	8.65	1917	9.21	2033	10.33	2142	11.49	2142	11.49	2250	12.69	2357	13.95

(ALL CAPACITIES BASED ON STANDARD AIR (DENSITY .075# / CU. FT. - 70°F. - 29.29" HG. BAR.))

SIZE 1 — DF TYPE DFB DUPLEX FAN — DOUBLE FAN

OUTLET AREA = 3.06 SQ. FT. WHEEL BLADE DIA. = 13" TIP SPEED = RPM x 3.41 STD. BALANCE RPM: 1800 MAX. RPM WITH REINFORCEMENT: 2375

Volume of Air CFM	1/2" SP		3/4" SP		1" SP		1 1/4" SP		1 1/2" SP		2" SP		2 1/2" SP		3" SP		3 1/2" SP		4" SP		5" SP		6" SP		7" SP		8" SP			
	RPM	BHP	RPM	BHP	RPM	BHP	RPM	BHP	RPM	BHP	RPM	BHP	RPM	BHP	RPM	BHP	RPM	BHP	RPM	BHP	RPM	BHP	RPM	BHP	RPM	BHP	RPM	BHP	RPM	BHP
2400	590	0.35	728	0.54																										
2800	582	0.40	725	0.62	841	0.84																								
3200	579	0.46	717	0.69	837	0.95	939	1.20																						
3600	591	0.54	710	0.77	830	1.04	936	1.33	1028	1.62																				
4000	1310	0.65	711	0.86	822	1.14	929	1.45	1024	1.77																				
4400	1440	0.78	724	0.99	818	1.25	920	1.57	1017	1.92																				
4800	1570	0.94	744	1.15	825	1.40	915	1.71	1008	2.06	1180	2.81	1326	3.58																
5200	1700	1.12	770	1.34	841	1.59	918	1.88	1003	2.22	1172	3.01	1322	3.83	1453	4.66														
5600	1830	1.32	798	1.56	863	1.81	931	2.09	1004	2.41	1163	3.20	1315	4.07	1449	4.96	1570	5.85												
6000	1960	1.55	827	1.81	888	2.06	950	2.34	1015	2.65	1158	3.41	1306	4.32	1443	5.26	1566	6.21	1674	7.57										
6400	2090		858	2.08	916	2.35	973	2.63	1031	2.94	1159	3.67	1298	4.56	1434	5.55	1560	6.56	1654	8.04										
6800	2220		889	2.38	946	2.67	999	2.96	1053	3.27	1167	3.97	1294	4.84	1426	5.84	1552	6.90	1668	7.97										
7200	2350		921	2.72	976	3.02	1028	3.33	1078	3.64	1182	4.33	1296	5.16	1419	6.15	1543	7.23	1661	8.36	1871	10.64								
8000	2610				1038	3.83	1087	4.17	1134	4.50	1225	5.21	1320	5.99	1422	6.91	1531	7.97	1644	9.14	1857	11.62	2048	14.15	2048	14.15	2210	18.11		
8800	2880						1149	5.16	1194	5.53	1278	6.27	1361	7.06	1447	7.93	1539	8.92	1637	10.04	1840	12.59	2034	15.33	2034	15.33	2210	18.11		
9600	3140								1256	6.72	1336	7.52	1412	8.14	1488	9.21	1567	10.16	1650	11.21	1830	13.66	2017	16.49	2017	16.49	2195	19.48	2360	22.51
10400	3400								1319	8.08	1397	8.96	1469	9.83	1539	10.73	1609	11.67	1682	12.68	1837	15.01	2005	17.76	2005	17.76	2178	20.83	2344	24.06
11200	3660										1459	10.59	1529	11.53	1595	12.47	1660	13.44	1725	14.45	1861	16.69	2009	19.30	2009	19.30	2166	22.31	2327	25.62
12000	3920										1523	12.42	1591	13.44	1655	14.44	1716	15.45	1777	16.49	1899	18.71	2029	21.21	2029	21.21	2168	24.08	2316	27.32
12800	4180												1654	15.56	1716	16.64	1775	17.71	1832	18.79	1946	21.04	2063	23.50	2063	23.50	2186	26.24	2318	29.34

(ALL CAPACITIES BASED ON STANDARD AIR (DENSITY .075# / CU. FT. - 70°F. - 29.29" HG. BAR.))

SIZE 1 1/8 — DF TYPE DFB UNITARY FAN — SINGLE FAN

OUTLET AREA = 2.22 SQ. FT. WHEEL BLADE DIA. = 14 5/8" TIP SPEED = RPM x 3.83 STD. BALANCE RPM: 1800 MAX. RPM WITH REINFORCEMENT: 2115

Volume of Air CFM	1/2" SP		3/4" SP		1" SP		1 1/4" SP		1 1/2" SP		2" SP		2 1/2" SP		3" SP		3 1/2" SP		4" SP		5" SP		6" SP		7" SP		8" SP					
	RPM	BHP	RPM	BHP	RPM	BHP	RPM	BHP	RPM	BHP	RPM	BHP	RPM	BHP	RPM	BHP	RPM	BHP	RPM	BHP	RPM	BHP	RPM	BHP	RPM	BHP	RPM	BHP				
1800	489	0.23	596	0.35	719	0.56	841	0.83	925	1.19	1013	1.53	1101	2.17	1188	2.90	1283	3.73	1398	5.12	1487	6.88	1599	9.05	1711	10.39	1825	11.84	1941	13.42		
2200	514	0.31	599	0.42	686	0.56	767	0.83	843	1.15	912	1.53	1001	2.17	1087	2.90	1207	3.60	1313	4.98	1423	6.30	1551	7.51	1682	8.85	1736	11.31	1842	12.77	1949	14.33
2600	550	0.42	623	0.54	694	0.67	767	0.83	843	1.15	912	1.53	1001	2.17	1087	2.90	1207	3.60	1313	4.98	1423	6.30	1551	7.51	1682	8.85	1736	11.31	1842	12.77	1949	14.33
3000	591	0.56	657	0.69	719	0.83	780	0.98	843	1.15	912	1.53	1001	2.17	1087	2.90	1207	3.60	1313	4.98	1423	6.30	1551	7.51	1682	8.85	1736	11.31	1842	12.77	1949	14.33
3400	632	0.73	695	0.88	752	1.03	807	1.19	861	1.35	912	1.53	1001	2.17	1087	2.90	1207	3.60	1313	4.98	1423	6.30	1551	7.51	1682	8.85	1736	11.31	1842	12.77	1949	14.33
3800	675	0.94	736	1.11	791	1.27	841	1.44	890	1.61	987	1.99	1087	2.90	1188	2.90	1305	4.58	1380	5.13	1453	6.44	1572	8.23	1693	9.57	1764	12.34	1864	13.81	1965	15.37
4200	718	1.19	778	1.37	831	1.55	879	1.74	925	1.92	1013	2.17	1101	2.74	1191	3.21	1283	3.73	1372	4.67	1453	6.44	1572	8.23	1693	9.57	1764	12.34	1864	13.81	1965	15.37
4600	821	1.69	872	1.88	919	2.08	963	2.28	1003	2.69	1082	3.13	1157	3.58	1231	4.06	1305	4.58	1380	5.13	1453	6.44	1572	8.23	1693	9.57	1764	12.34	1864	13.81	1965	15.37
5000	2250		864	2.05	914	2.26	960	2.48	1003	2.69	1082	3.13	1157	3.58	1231	4.06	1305	4.58	1380	5.13	1453	6.44	1572	8.23	1693	9.57	1764	12.34	1864	13.81	1965	15.37
5400	2430		864	2.05	914	2.26	960	2.48	1003	2.69	1082	3.13	1157	3.58	1231	4.06	1305	4.58	1380	5.13	1453	6.44	1572	8.23	1693	9.57	1764	12.34	1864	13.81	1965	15.37
5800	2610		864	2.05	914	2.26	960	2.48	1003	2.69	1082	3.13	1157	3.58	1231	4.06	1305	4.58	1380	5.13	1453	6.44	1572	8.23	1693	9.57	1764	12.34	1864	13.81	1965	15.37
6200	2790		864	2.05	914	2.26	960	2.48	1003	2.69	1082	3.13	1157	3.58	1231	4.06	1305	4.58	1380	5.13	1453	6.44	1572	8.23	1693	9.57	1764	12.34	1864	13.81	1965	15.37
6600	2970		864	2.05	914	2.26	960	2.48	1003	2.69	1082	3.13	1157	3.58	1231	4.06	1305	4.58	1380	5.13	1453	6.44	1572	8.23	1693	9.57	1764	12.34	1864	13.81	1965	15.37
7000	3150		864	2.05	914	2.26	960	2.48	1003	2.69	1082	3.13	1157	3.58	1231	4.06	1305	4.58	1380	5.13	1453	6.44	1572	8.23	1693	9.57	1764	12.34	1864	13.81	1965	15.37
7400	3330		864	2.05	914	2.26	960	2.48	1003	2.69	1082	3.13	1157	3.58	1231	4.06	1305	4.58	1380	5.13	1453	6.44	1572	8.23	1693	9.57	1764	12.34	1864	13.81	1965	15.37
7800	3510		864	2.05	914	2.26	960	2.48	1003	2.69	1082	3.13	1157	3.58	1231	4.06	1305	4.58	1380	5.13	1453	6.44	1572	8.23	1693	9.57	1764	12.34	1864	13.81	1965	15.37
8200	3690		864	2.05	914	2.26	960	2.48	1003	2.69	1082	3.13	1157	3.58	1231	4.06	1305	4.58	1380	5.13	1453	6.44	1572	8.23	1693	9.57	1764	12.34	1864	13.81	1965	15.37
8600	3870		864	2.05	914	2.26	960	2.48	1003	2.69	1082	3.13	1157	3.58	1231	4.06	1305	4.58	1380	5.13	1453	6.44	1572	8.23	1693	9.57	1764	12.34	1864	13.81	1965	15.37
9000	4050		864	2.05	914	2.26	960	2.48	1003	2.69	1082	3.13	1157	3.58	1231	4.06	1305	4.58	1380	5.13	1453	6.44	1572	8.23	1693	9.57	1764	12.34	1864	13.81	1965	15.37
9400	4230		864	2.05	914	2.26	960	2.48	1003	2.69	1082	3.13	1157	3.58	1231	4.06	1305	4.58	1380	5.13	1453	6.44	1572	8.23	1693	9.57	1764	12.34	1864	13.81	1965	15.37

(ALL CAPACITIES BASED ON STANDARD AIR (DENSITY .075# / CU. FT. - 70°F. - 29.29" HG. BAR.))

SIZE 1 1/8 — DF TYPE DFB DUPLEX FAN — DOUBLE FAN

OUTLET AREA = 4.44 SQ. FT. WHEEL BLADE DIA. = 14 5/8" TIP SPEED = RPM x 3.83 STD. BALANCE RPM: 1800 MAX. RPM WITH REINFORCEMENT: 2115

Volume of Air CFM	1/2" SP		3/4" SP		1" SP		1 1/4" SP		1 1/2" SP		2" SP		2 1/2" SP		3" SP		3 1/2" SP		4" SP		5" SP		6" SP		7" SP		8" SP					
	RPM	BHP	RPM	BHP	RPM	BHP	RPM	BHP	RPM	BHP	RPM	BHP	RPM	BHP	RPM	BHP	RPM	BHP	RPM	BHP	RPM	BHP	RPM	BHP	RPM	BHP	RPM	BHP				
3600	509	0.50	634	0.78	729	1.26	811	1.84	895	2.25	1034	3.45	1155	4.88	1263	6.53	1362	8.39	1453	10.46	1533	12.06	1617	15.22	1774	19.68	1882	21.52	1991	24.58	2052	29.93
4000	513	0.64	623	0.92	718	1.45	802	2.09	884	2.53	1034	3.45	1155	4.88	1263	6.53	1362	8.39	1453	10.46	1533	12.06	1617	15.22	1774	19.68	1882	21.52	1991	24.58	2052	29.93
4400	542	0.85	625	1.11	718	1.45	802	2.09	884	2.53	1034	3.45	1155	4.88	1263	6.53	1362	8.39	1453	10.46	1533	12.06	1617	15.22	1774	19.68	1882	21.52	1991	24.58	2052	29.93
4800	581	1.14	649	1.40	721	1.71	808	2.43	889	3.29	1014	4.24	1144	5.36	1254	7.10	1350	9.05	1453	10.46	1533	12.06	1617	15.22	1774	19.68	1882	21.52	1991	24.58	2052	29.93
5200	624	1.50	684	1.78	744	2.08	832	2.91	914	3.88	1019	4.77	1134	5.86	1254	7.10	1350	9.05	1453	10.46	1533	12.06	1617	15.22	1774	19.68	1882	21.52	1991	24.58	2052	29.93
5600	667	1.93	725	2.24	778	2.56	866	3.50	948	4.60	1038	5.46	1136	6.49	1244	8.44	1342	9.76	1441	11.22	1533	12.06	1617	15.22	1774	19.68	1882	21.52	1991	24.58	2052	29.93
6000	712	2.45	768	2.80	818	3.15	866	3.50	948	4.60	1038	5.46	1136	6.49	1244	8.44	1342	9.76	1441	11.22	1533	12.06	1617	15.22	1774	19.68	1882	21.52	1991	24.58	2052	29.93
6400	759	3.04	811	3.45	860	3.83	904	4.21	948	4.60	1038	5.46	1136	6.49	1244	8.44	1342	9.76	1441	11.22	1533	12.06	1617	15.22	1774	19.68	1882	21.52	1991	24.58	2052	29.93
6800	807	3.73	856	4.20	903	4.62	946	5.03	987	5.45	1068	6.31	1152	7.30	1244	8.44	1342	9.76	1441	11.22	1533	12.06	1617	15.22	1774	19.68	1882	21.52	1991	24.58	2052	29.93
7200	856	4.51	903	5.03	947	5.52	989	5.97	1028	6.42	1103	7.32	1179	8.29	1258	9.39	1343	10.64	1434	12.05	1533	12.06	1617	15.22	1774	19.68	1882	21.52	1991	24.58	2052	29.93
7600	906	5.37	951	5.89	1032	6.54	1076	8.22	1114	8.74	1183	9.76	1249	10.79	1314	11.87	1381	13.04	1451	14.33	1533	12.06	1617	15.22	1774	19.68	1882	21.52	1991	24.58	2052	29.93
8000	957	6.31	1000	6.84	1076	7.51	1114	8.74	1183	9.76	1249	10.79	1314	11.87	1381	13.04	1451	14.33	1533	12.06	1617	15.22	1774	19.68	1882	21.52	1991	24.58	2052	29.93	29.93	34.86
8400	1010	7.36	1051	7.80	1114	8.74	1183	9.76	1249	10.79	1314	11.87	1381	13.04	1451	14.33	1533	12.06	1617	15.22	1774	19.68	1882	21.52	1991	24.58	2052	29.93	29.93	34.86	36.96	36.96
8800	1063	8.41	1100	8.84	1161	9.81	1202	10.61	1269	12.78	1330	13.93	1388	15.08	1446	16.28	1504	17.53	1626	20.32	1758	23.59	1898	27.35	2040	31.45	2152	28.99	2311	33.05	2311	33.05
9200	1117	9.56	1151	9.81	1202	10.61	1269	12.78	1330	13.93	1388	15.08	1446	16.28	1504	17.53	1626	20.32	1758	23.59	1898	27.35	2040	31.45	2152	28.99	2311	33.05	2311	33.05	2311	33.05
9600	1172	10.79	1202	10.61	1269	12.78	1330	13.93	1388	15.08	1446	16.28	1504	17.53	1626	20.32	1758	23.59	1898	27.35	2040	31.45	2152	28.99	2311	33.05	2311	33.05	2311	33.05	2311	33.05
10000	1228	12.14	1251	11.11	1314	14.46	1381	16.96	1429	16.96	1538	19.46	1650	22.21	1769	25.36																

SIZE 1 1/4 — DF TYPE DFB UNITARY FAN — SINGLE FAN

OUTLET AREA = 2.44 SQ. FT. WHEEL BLADE DIA. = 16 1/4" TIP SPEED = RPM x 4.25 STD. BALANCE RPM: 1800 MAX. RPM WITH REINFORCEMENT: 1906

Volume of Air CFM	1/2" SP		3/4" SP		1" SP		1 1/4" SP		1 1/2" SP		2" SP		2 1/2" SP		3" SP		3 1/2" SP		4" SP		5" SP		6" SP		7" SP		8" SP									
	RPM	BHP	RPM	BHP	RPM	BHP	RPM	BHP	RPM	BHP	RPM	BHP	RPM	BHP	RPM	BHP	RPM	BHP	RPM	BHP	RPM	BHP	RPM	BHP	RPM	BHP	RPM	BHP	RPM	BHP						
2000	819	0.25	538	0.39																																
2400	983	0.31	529	0.45	618	0.62																														
2800	1150	0.40	536	0.54	611	0.70	687	0.89	762	1.10																										
3200	1310	0.51	554	0.66	618	0.82	683	1.01	750	1.21	881	1.68																								
3600	1480	0.65	578	0.80	635	0.97	692	1.16	750	1.36	868	1.83																								
4000	1640	0.81	606	0.98	658	1.15	709	1.34	760	1.55	864	2.01	970	2.55																						
4400	1800	1.00	634	1.18	684	1.37	731	1.57	777	1.78	870	2.24	966	2.77	1063	3.36	1159	4.00																		
4800	1970	1.22	664	1.42	712	1.62	757	1.83	799	2.05	884	2.51	970	3.04	1058	3.62	1147	4.26	1235	4.96																
5200	2130	1.46	694	1.69	741	1.91	784	2.13	825	2.36	904	2.84	982	3.36	1062	3.94	1143	4.58	1225	5.27																
5600	2300	1.72	725	2.00	771	2.23	813	2.47	852	2.71	927	3.21	999	3.74	1072	4.32	1146	4.95	1222	5.63	1374	7.15														
6000	2460	2.00			802	2.60	843	2.85	881	3.11	952	3.63	1021	4.17	1088	4.76	1157	5.38	1226	6.06	1367	7.56	1509	9.24												
6400	2620	2.30			832	3.00	873	3.27	910	3.55	980	4.09	1045	4.66	1108	5.25	1172	5.88	1236	6.56	1367	8.05	1500	9.72												
6800	2790	2.60			903	3.74	903	3.74	940	4.03	1008	4.61	1071	5.20	1131	5.81	1191	6.45	1251	7.13	1372	8.61	1496	10.26	1622	12.08										
7200	2950	2.90			934	4.26	934	4.26	970	4.56	1037	5.17	1098	5.79	1157	6.42	1213	7.08	1270	7.76	1383	9.24	1499	10.88	1617	12.69										
7600	3110	3.20							1001	5.14	1067	5.79	1127	6.44	1183	7.09	1238	7.77	1292	8.47	1399	9.95	1507	11.59	1617	13.38	1729	15.33								
8000	3280	3.50							1032	5.78					1211	7.82	1264	8.52	1315	9.24	1417	10.74	1519	12.38	1623	14.16	1728	16.09								
8400	3440	3.80												1185	7.90	1291	9.34	1341	10.07	1438	11.61	1535	13.26	1633	15.03	1732	16.95									
8800	3610	4.10												1158	7.97	1215	8.72	1269	9.46	1319	10.22	1368	10.98	1462	12.55	1554	14.21	1647	15.99	1741	17.90					
9200	3770	4.40												1188	8.81					1298	10.38	1348	11.16	1396	11.95	1487	13.57	1576	15.26	1664	17.05	1753	18.96			
9600	3930	4.70												1276	10.54	1328	11.36	1377	12.17	1424	12.99	1513	14.66	1599	16.38	1684	18.19	1768	20.11							
10000	4100	5.00												1307	11.55	1358	12.40	1407	13.25	1453	14.10	1541	15.82	1624	17.59	1705	19.43	1787	21.35							

(ALL CAPACITIES BASED ON STANDARD AIR (DENSITY .075# / CU. FT. - 70°F. - 29.29" HG. BAR.))

SIZE 1 1/4 — DF TYPE DFB DUPLEX FAN — DOUBLE FAN

OUTLET AREA = 4.88 SQ. FT. WHEEL BLADE DIA. = 16 1/4" TIP SPEED = RPM x 4.25 STD. BALANCE RPM: 1800 MAX. RPM WITH REINFORCEMENT: 1906

Volume of Air CFM	1/2" SP		3/4" SP		1" SP		1 1/4" SP		1 1/2" SP		2" SP		2 1/2" SP		3" SP		3 1/2" SP		4" SP		5" SP		6" SP		7" SP		8" SP						
	RPM	BHP	RPM	BHP	RPM	BHP	RPM	BHP	RPM	BHP	RPM	BHP	RPM	BHP	RPM	BHP	RPM	BHP	RPM	BHP	RPM	BHP	RPM	BHP	RPM	BHP	RPM	BHP	RPM	BHP			
4000	819	0.56	567	0.87																													
4800	983	0.66	562	1.02	654	1.39																											
5600	1150	0.82	554	1.16	648	1.58	730	2.01	803	2.44																							
6400	1310	1.03	556	1.35	640	1.77	723	2.25	798	2.74	923	4.12																					
7200	1480	1.31	572	1.62	640	2.01	715	2.49	790	3.02	903	4.88	1025	6.21	1130	7.56	1220	9.61	1309	11.09													
8000	1640	1.64	596	1.97	653	2.34	716	2.79	783	3.31	916	4.50	1032	5.73	1115	8.69	1213	10.28	1304	11.87													
8800	1800	2.03	624	2.39	675	2.77	727	3.19	784	3.69	907	4.88	1025	6.21	1130	7.56	1220	9.61	1309	11.09													
9600	1970	2.30	654	2.88	701	3.28	747	3.70	796	4.17	903	5.31	1017	6.68	1124	8.13	1220	10.28	1304	11.87													
10400	2130	2.60	685	3.45	730	3.87	772	4.30	815	4.77	908	5.85	1010	7.18	1115	8.69	1213	10.28	1304	11.87													
11200	2300	2.90	716	4.08	760	4.54	800	5.00	840	5.47	921	6.52	1011	7.79	1108	9.29	1205	10.93	1296	12.63	1460	16.07											
12000	2460	3.20			791	5.30	830	5.78	867	6.28	941	7.33	1020	8.54	1106	9.98	1197	11.61	1288	13.38	1454	17.03											
12800	2620	3.50			822	6.14	860	6.66	896	7.18	965	8.26	1036	9.45	1113	10.82	1195	12.39	1280	14.16	1446	17.98	1596	21.90									
13600	2790	3.80			891	7.63	891	7.63	926	8.19	992	9.30	1057	10.50	1126	11.82	1199	13.33	1277	15.04	1438	18.91	1589	23.04	1726	27.21							
14400	2950	4.10			923	8.70	923	8.70	957	9.29	1020	10.46	1082	11.68	1145	12.99	1211	14.45	1281	16.09	1431	19.90	1580	24.16	1719	28.55	1846	32.97					
15200	3110	4.40							988	10.50	1050	11.74	1109	12.99	1167	14.31	1228	15.74	1291	17.33	1428	21.01	1572	25.30	1711	29.87	1839	34.52					
16000	3280	4.70							1020	11.82	1081	13.13	1137	14.44	1193	15.78	1249	17.21	1307	18.75	1431	22.31	1566	26.52	1702	31.18	1831	36.03					
16800	3440	5.00									1111	14.64	1167	16.01	1220	17.39	1273	18.83	1326	20.36	1440	23.82	1564	27.90	1694	32.54	1823	37.52					
17600	3610	5.30									1143	16.27	1197	17.07	1248	19.14	1299	20.61	1349	22.15	1454	25.54	1568	29.48	1690	34.03	1814	39.04					
18400	3770	5.60									1174	18.03	1228	19.54	1278	21.07	1326	22.54	1375	24.10	1473	27.46	1578	31.30	1690	35.71	1808	40.67					
19200	3930	5.90											1259	21.50	1308	23.07	1355	24.63	1402	26.22	1495	29.59	1592	33.35	1696	37.63	1806	42.47					
20000	4100	6.20											1290	23.61	1339	25.24	1385	26.87	1430	28.50	1519	31.91	1610	35.63	1706	39.80	1809	44.50					

(ALL CAPACITIES BASED ON STANDARD AIR (DENSITY .075# / CU. FT. - 70°F. - 29.29" HG. BAR.))

SIZE 1 3/8 — DF TYPE DFB UNITARY FAN — SINGLE FAN

WHEEL BLADE DIA. = 17 7/8" TIP SPEED = RPM x 4.68 STD. BALANCE RPM: 1700 MAX. RPM WITH REINFORCEMENT: 1731

OUTLET AREA = 3.00 SQ. FT.

Volume of Air CFM	1/2" SP		3/4" SP		1" SP		1 1/4" SP		1 1/2" SP		2" SP		2 1/2" SP		3" SP		3 1/2" SP		4" SP		5" SP		6" SP		7" SP		8" SP		
	RPM	BHP	RPM	BHP	RPM	BHP	RPM	BHP	RPM	BHP	RPM	BHP	RPM	BHP	RPM	BHP	RPM	BHP	RPM	BHP	RPM	BHP	RPM	BHP	RPM	BHP	RPM	BHP	
2500	393	0.31	487	0.48																									
3000	405	0.40	481	0.57	559	0.77																							
3500	426	0.51	490	0.68	556	0.88	623	1.11	689	1.36																			
4000	452	0.66	509	0.84	565	1.04	622	1.26	681	1.51	797	2.08	890	2.92	973	3.88													
4500	479	0.84	533	1.03	583	1.24	633	1.46	683	1.71	787	2.28	890	3.16	973	3.88													
5000	508	1.05	559	1.26	606	1.48	650	1.71	695	1.96	786	2.52	880	3.16	973	3.88													
5500	536	1.30	587	1.53	631	1.77	673	2.01	713	2.26	795	2.82	879	3.46	964	4.17	1049	4.95											
6000	615	1.84	658	2.10	698	2.36	736	2.62	736	2.62	810	3.19	886	3.82	962	4.53	1040	5.30	1118	6.14									
6500	643	2.20	686	2.47	724	2.75	760	3.03	760	3.03	830	3.62	899	4.26	969	4.96	1040	5.72	1111	6.55									
7000	672	2.60	714	2.90	752	3.20	787	3.50	787	3.50	853	4.11	917	4.76	981	5.46	1046	6.22	1112	7.05									
7500	742	3.38	780	3.70	814	4.02	878	4.66	814	4.02	878	4.66	938	5.33	998	6.04	1058	6.81	1118	7.62									
8000	771	3.91	808	4.25	842	4.59	842	4.59	842	4.59	904	5.28	962	5.97	1018	6.70	1074	7.47	1130	8.29									
8500	837	4.87	870	5.23	931	5.95	987	6.68	870	5.23	931	5.95	987	6.68	1041	7.44	1094	8.22	1147	9.05									
9000	866	5.55	866	5.55	899	5.93	899	5.93	899	5.93	959	6.70	1014	7.46	1066	8.25	1116	9.05	1166	9.89									
9500	927	6.70	987	7.51	1041	8.31	1091	9.13	1041	8.31	1091	9.13	1140	9.96	1188	10.82	1282	12.63	1377	14.61									
10000	957	7.54	957	7.54	957	7.54	957	7.54	957	7.54	1015	8.39	1068	9.24	1118	10.09	1165	10.95	1211	11.84									
10500	1044	9.34	1097	10.24	1145	11.13	1192	12.03	1145	11.13	1192	12.03	1236	12.94	1322	14.83	1407	16.83	1493	18.98									
11000	1073	10.38	1125	11.31	1173	12.25	1218	13.19	1173	12.25	1218	13.19	1262	14.13	1345	16.07	1427	18.11	1508	20.27									
11500	1102	11.50	1153	12.47	1201	13.45	1247	14.43	1201	13.45	1247	14.43	1289	15.41	1370	17.41	1448	19.49	1526	21.67									
12000	1182	13.72	1229	14.74	1274	15.76	1316	16.78	1274	15.76	1316	16.78	1358	17.81	1421	20.38	1496	22.56	1568	24.82									
12500	1211	15.05	1258	16.12	1302	17.18	1343	18.24	1302	17.18	1343	18.24	1384	19.38	1441	21.11	1482	22.25	1548	24.31									

(ALL CAPACITIES BASED ON STANDARD AIR (DENSITY .075#/CU. FT. - 70°F. - 29.29" HG. BAR.))

SIZE 1 3/8 — DF TYPE DFB DUPLEX FAN — DOUBLE FAN

WHEEL BLADE DIA. = 17 7/8" TIP SPEED = RPM x 4.68 STD. BALANCE RPM: 1700 MAX. RPM WITH REINFORCEMENT: 1731

OUTLET AREA = 6.00 SQ. FT.

Volume of Air CFM	1/2" SP		3/4" SP		1" SP		1 1/4" SP		1 1/2" SP		2" SP		2 1/2" SP		3" SP		3 1/2" SP		4" SP		5" SP		6" SP		7" SP		8" SP		
	RPM	BHP	RPM	BHP	RPM	BHP	RPM	BHP	RPM	BHP	RPM	BHP	RPM	BHP	RPM	BHP	RPM	BHP	RPM	BHP	RPM	BHP	RPM	BHP	RPM	BHP	RPM	BHP	
5000	415	0.70	515	1.08																									
6000	411	0.83	509	1.26	594	1.72																							
7000	423	1.04	503	1.45	587	1.96	663	2.50	729	3.04																			
8000	445	1.33	509	1.71	581	2.21	655	2.79	724	3.40	842	4.64	941	6.51	1030	8.67													
9000	472	1.70	526	2.08	585	2.54	649	3.11	716	3.76	837	5.13	918	7.13	1010	10.11													
10000	500	2.14	550	2.55	600	2.99	653	3.52	711	4.15	830	5.60	937	7.13	1030	10.82													
11000	530	2.65	577	3.10	622	3.56	667	4.07	716	4.66	823	6.08	929	7.72	1026	9.40	1112	11.09											
12000	606	3.75	647	4.24	688	4.75	730	5.32	822	6.66	921	8.31	1018	10.11	1107	11.95	1188	13.79											
13000	635	4.49	675	5.02	713	5.55	750	6.12	830	7.41	918	8.99	1010	10.82	1107	12.77	1182	14.76											
14000	665	5.33	704	5.90	740	6.47	774	7.06	845	8.33	922	9.83	1006	11.60	1092	13.60	1175	15.70	1325	19.99									
15000	733	6.90	768	7.51	801	8.12	866	9.41	934	10.86	1008	12.55	1087	14.50	1167	16.65	1319	21.18	25.78	25.78									
16000	763	8.01	797	8.67	829	9.32	890	10.64	952	12.08	1017	13.71	1087	15.57	1162	17.68	1311	22.35	27.23	27.23									
17000	857	9.95	857	9.95	857	9.95	857	9.95	857	9.95	916	12.03	974	13.48	1033	15.08	1095	16.87	1162	18.89									
18000	887	12.10	887	12.10	887	12.10	887	12.10	887	12.10	944	13.56	998	15.06	1052	16.65	1109	18.39	1169	20.33									
19000	916	13.70	916	13.70	916	13.70	916	13.70	916	13.70	972	15.25	1024	16.80	1075	18.41	1128	20.14	1182	22.02									
20000	946	15.43	946	15.43	946	15.43	946	15.43	946	15.43	1001	17.08	1051	18.71	1100	20.36	1149	22.10	1199	23.96									
21000	1030	19.07	1030	19.07	1030	19.07	1030	19.07	1030	19.07	1030	19.07	1080	20.78	1127	22.50	1173	24.26	1220	26.12									
22000	1060	21.22	1060	21.22	1060	21.22	1060	21.22	1060	21.22	1060	21.22	1108	23.02	1154	24.81	1199	26.62	1243	28.50									
23000	1090	23.54	1090	23.54	1090	23.54	1090	23.54	1090	23.54	1090	23.54	1138	25.44	1183	27.30	1226	29.18	1268	31.10									
24000	1167	28.03	1167	28.03	1167	28.03	1167	28.03	1167	28.03	1167	28.03	1167	28.03	1167	28.03	1254	31.93	1294	33.90									
25000	1197	30.80	1197	30.80	1197	30.80	1197	30.80	1197	30.80	1197	30.80	1197	30.80	1197	30.80	1282	34.88	1322	36.92									

(ALL CAPACITIES BASED ON STANDARD AIR (DENSITY .075#/CU. FT. - 70°F. - 29.29" HG. BAR.))

SIZE 1 3/4 — DF TYPE DFB UNITARY FAN — SINGLE FAN

OUTLET AREA = 4.77 SQ. FT. WHEEL BLADE DIA. = 22 3/4" TIP SPEED = RPM x 5.95 STD. BALANCE RPM: 1400 MAX. RPM WITH REINFORCEMENT: 1450

Volume of Air CFM	1/2" SP		3/4" SP		1" SP		1 1/4" SP		1 1/2" SP		2" SP		2 1/2" SP		3" SP		3 1/2" SP		4" SP		5" SP		6" SP		7" SP		8" SP		
	RPM	BHP	RPM	BHP	RPM	BHP	RPM	BHP	RPM	BHP	RPM	BHP	RPM	BHP	RPM	BHP	RPM	BHP	RPM	BHP	RPM	BHP	RPM	BHP	RPM	BHP	RPM	BHP	
4000	321	0.52	400	0.82																									
4500	317	0.57	397	0.90	463	1.24																							
5000	1050	0.63	393	0.97	460	1.35	517	1.73																					
5500	319	0.72	388	1.05	456	1.45	515	1.86	567	2.28																			
6000	1260	0.81	387	1.14	451	1.54	511	1.99	565	2.44																			
6500	332	0.93	388	1.25	448	1.65	507	2.11	561	2.59	654	3.58																	
7000	1470	1.05	393	1.39	447	1.78	507	2.23	556	2.74	652	3.79	730	5.13															
7500	1570	1.20	400	1.54	449	1.93	499	2.37	551	2.88	648	3.99	730	5.13	801	6.60													
8000	1680	1.36	407	1.72	453	2.10	500	2.54	548	3.04	643	4.18	727	5.39	801	6.60													
9000	1890	1.73	424	2.12	466	2.53	507	2.97	548	3.45	634	4.58	718	5.87	795	7.22	863	8.59	921	10.81									
10000	2100		443	2.60	483	3.04	521	3.50	557	3.98	632	5.08	709	6.37	785	7.80	856	9.29	921	10.81	10.81								
11000	2310		464	3.17	501	3.63	537	4.12	571	4.63	637	5.72	706	6.97	777	8.40	846	9.96	912	11.59	1031	14.92							
12000	2520				521	4.32	555	4.84	587	5.38	649	6.50	710	7.74	773	9.12	838	10.67	902	12.35	1023	15.91	1129	19.55					
13000	2730				542	5.12	574	5.67	605	6.24	664	7.41	720	8.66	777	10.02	835	11.53	895	13.19	1013	16.86	1122	20.75	1220	24.69			
14000	2940				594	6.61	594	6.61	624	7.20	681	8.44	734	9.73	786	11.10	839	12.58	893	14.20	1004	17.85	1112	21.89	1212	26.09			
15000	3140						644	8.29	699	9.59	750	10.94	799	12.34	848	13.83	897	15.42	999	18.99	1103	23.05	1203	27.43	1296	31.93			
16000	3350						665	9.52	717	10.86	767	12.27	814	13.73	860	15.25	906	16.84	999	20.35	1096	24.35	1193	28.77	1286	33.45			
17000	3560								737	12.27	785	13.75	831	15.27	875	16.83	918	18.45	1005	21.93	1094	25.85	1185	30.23	1276	34.99			
18000	3770								758	13.84	804	15.36	849	16.95	892	18.57	933	20.23	1014	23.74	1097	27.61	1182	31.91	1268	36.63			
19000	3980										824	17.14	867	18.78	909	20.47	949	22.19	1026	25.77	1104	29.62	1183	33.85	1264	38.49			
20000	4190										844	19.09	886	20.78	927	22.53	966	24.31	1041	27.99	1114	31.87	1188	36.06	1263	40.63			

(ALL CAPACITIES BASED ON STANDARD AIR (DENSITY .075#/CU. FT. - 70F. - 29.29" HG. BAR.))

SIZE 1 3/4 — DF TYPE DFB DUPLEX FAN — DOUBLE FAN

OUTLET AREA = 9.54 SQ. FT. WHEEL BLADE DIA. = 22 3/4" TIP SPEED = RPM x 5.95 STD. BALANCE RPM: 1400 MAX. RPM WITH REINFORCEMENT: 1450

Volume of Air CFM	1/2" SP		3/4" SP		1" SP		1 1/4" SP		1 1/2" SP		2" SP		2 1/2" SP		3" SP		3 1/2" SP		4" SP		5" SP		6" SP		7" SP		8" SP		
	RPM	BHP	RPM	BHP	RPM	BHP	RPM	BHP	RPM	BHP	RPM	BHP	RPM	BHP	RPM	BHP	RPM	BHP	RPM	BHP	RPM	BHP	RPM	BHP	RPM	BHP	RPM	BHP	
8000	315	1.07	388	1.66	449	2.50	502	3.48																					
9000	315	1.21	387	1.83	449	2.72	502	3.48																					
10000	317	1.37	386	2.01	447	2.96	500	3.76	550	4.59																			
11000	321	1.55	386	2.22	446	3.22	498	4.05	548	4.92																			
12000	327	1.76	388	2.45	446	3.50	498	4.36	547	5.27	634	7.20																	
13000	334	2.01	392	2.72	446	3.82	499	4.70	546	5.64	633	7.64	708	10.31															
14000	342	2.29	396	3.01	449	4.18	500	5.08	546	6.04	632	8.11	708	10.31	777	13.27													
15000	351	2.60	402	3.34	452	4.57	503	5.49	547	6.47	631	8.60	707	10.88															
16000	362	2.97	409	3.72	457	5.08	511	6.04	552	7.47	631	9.68	705	12.08	774	14.63	838	17.28											
18000	385	3.83	427	4.60	469	6.59	524	7.58	562	8.65	635	10.95	705	13.44	772	16.10	835	18.90	895	21.80									
20000	2100		447	5.68	485	7.92	539	8.93	574	10.03	643	12.42	709	15.00	773	17.75	834	20.66	892	23.69	1001	30.05							
22000	2310		471	7.00	505	9.50	558	10.54	609	11.66	654	14.11	716	16.78	776	19.62	835	22.61	891	25.75	998	32.38	1096	39.37					
24000	2520				552	11.36	588	12.41	630	13.55	668	16.05	726	18.80	783	21.72	839	24.81	893	28.04	997	34.88	1094	42.14					
26000	2730						603	14.59	630	15.74	684	18.29	739	21.09	793	24.10	845	27.27	897	30.58	997	37.61	1092	45.11	1184	49.73			
28000	2940								653	18.25	703	20.83	754	23.68	805	26.76	855	30.01	904	33.41	1000	40.62	1092	48.31	1180	56.41			
30000	3140								678	21.10	723	23.72	771	26.61	819	29.74	866	33.06	913	36.55	1005	43.93	1094	51.79	1179	60.09			
32000	3350										746	26.98	790	29.90	835	33.07	880	36.46	925	40.01	1013	47.56	1098	55.60	1181	64.08			
34000	3560																												
36000	3770										771	30.62	811	33.58	853	36.79	896	40.22	938	43.84	1022	51.54	1104	59.75	1184	68.41			
38000	3980												834	37.68	873	37.68	913	44.38	954	48.05	1034	55.89	1113	64.27	1190	73.10			
40000	4190												858	42.20	895	45.48	932	48.98	971	52.69	1047	60.64	1123	69.17	1197	78.18			

(ALL CAPACITIES BASED ON STANDARD AIR (DENSITY .075#/CU. FT. - 70F. - 29.29" HG. BAR.))

SIZE 2 — DF TYPE DFB UNITARY FAN — SINGLE FAN

WHEEL BLADE DIA. = 26" TIP SPEED = RPM x 6.81 STD. BALANCE RPM: 1000 MAX. RPM WITH REINFORCEMENT: 1189

OUTLET AREA = 6.23 SQ. FT.

Volume of Air CFM	1/2" SP		3/4" SP		1" SP		1 1/4" SP		1 1/2" SP		2 1/2" SP		3" SP		3 1/2" SP		4" SP		5" SP		6" SP		7" SP		8" SP							
	RPM	BHP	RPM	BHP	RPM	BHP	RPM	BHP	RPM	BHP	RPM	BHP	RPM	BHP	RPM	BHP	RPM	BHP	RPM	BHP	RPM	BHP	RPM	BHP	RPM	BHP	RPM	BHP				
6000	272	0.73	326	1.02	386	1.39	427	2.00	478	2.49																						
7000	285	0.95	329	1.24	377	1.59	427	2.00	478	2.49																						
8000	300	1.23	341	1.55	380	1.89	421	2.27	464	2.72																						
9000	317	1.55	355	1.92	390	2.28	425	2.66	461	3.08	539	4.10	571	5.71																		
10000	334	1.93	371	2.35	404	2.75	436	3.15	467	3.57	532	4.53	603	6.22																		
11000	351	2.38	387	2.84	420	3.29	449	3.73	478	4.17	535	5.12	596	6.22	660	7.52																
12000	369	2.89	404	3.40	436	3.91	465	4.39	492	4.87	543	5.85	596	6.92	653	8.15	712	9.56	759	11.80	854	16.02										
13000	2090		422	4.04	452	4.59	481	5.13	507	5.65	556	6.69	603	7.77	653	8.96	705	10.30	759	11.80	854	16.02										
14000	2250		439	4.75	469	5.35	497	5.94	523	6.52	570	7.64	614	8.77	659	9.96	705	11.25	753	12.68	854	16.02										
15000	2410				487	6.20	514	6.84	539	7.47	585	8.69	627	9.88	669	11.11	711	12.40	754	13.78	845	16.97										
16000	2570				504	7.15	531	7.84	555	8.52	601	9.84	642	11.12	681	12.40	720	13.71	760	15.09	841	18.17	929	21.77								
17000	2730				523	8.21	548	8.93	572	9.66	617	11.08	657	12.46	696	13.82	732	15.18	769	16.59	844	19.62	923	23.08	1006	27.06						
18000	2890				566	10.13	566	10.13	589	10.90	633	12.43	673	13.92	711	15.36	746	16.79	781	18.24	850	21.29	922	24.67	998	28.49						
19000	3050				584	11.46	584	11.46	607	12.27	650	13.89	690	15.48	726	17.02	761	18.54	794	20.05	860	23.17	926	26.51	996	30.22						
20000	3210								625	13.76	667	15.47	706	17.16	742	18.81	776	20.42	809	22.01	871	25.23	934	28.60	998	32.25						
21000	3370								644	15.38	684	17.17	723	18.96	758	20.71	792	22.43	824	24.11	884	27.46	944	30.90	1004	34.54						
22000	3530										702	19.00	740	20.89	775	22.75	808	24.57	839	26.35	899	29.86	956	33.40	1012	37.07						
23000	3690										720	20.98	757	22.95	792	24.91	824	26.84	855	28.72	914	32.42	969	36.09	1023	39.83						
24000	3850										739	23.12	774	25.16	809	27.22	841	29.25	872	31.24	929	35.13	983	38.95	1035	42.81						
25000	4010										792	27.53	826	29.67	858	31.80	888	33.80	918	36.30	945	38.00	998	42.00	1049	45.98						
26000	4170										810	30.07	843	32.29	875	34.51	905	36.72	931	39.61	961	41.02	1013	45.21	1063	49.35						

(ALL CAPACITIES BASED ON STANDARD AIR (DENSITY .075# / CU. FT. - 70°F. - 29.29" HG. BAR.))

SIZE 2 — DF TYPE DFB DUPLEX FAN — DOUBLE FAN

WHEEL BLADE DIA. = 26" TIP SPEED = RPM x 6.81 STD. BALANCE RPM: 1000 MAX. RPM WITH REINFORCEMENT: 1189

OUTLET AREA = 12.46 SQ. FT.

Volume of Air CFM	1/2" SP		3/4" SP		1" SP		1 1/4" SP		1 1/2" SP		2 1/2" SP		3" SP		3 1/2" SP		4" SP		5" SP		6" SP		7" SP		8" SP								
	RPM	BHP	RPM	BHP	RPM	BHP	RPM	BHP	RPM	BHP	RPM	BHP	RPM	BHP	RPM	BHP	RPM	BHP	RPM	BHP	RPM	BHP	RPM	BHP	RPM	BHP	RPM	BHP					
12000	281	1.64	350	2.53	407	3.44	455	4.99	499	6.07																							
14000	285	1.99	345	2.88	404	3.92	451	5.58	497	6.80																							
16000	297	2.50	345	3.32	399	4.39	451	6.17	488	7.50	575	10.24	643	14.23	704	18.7																	
18000	313	3.15	353	3.95	397	4.95	446	6.17	492	7.50	575	10.24	643	14.23	704	18.7																	
20000	331	3.95	367	4.77	404	5.72	444	6.87	488	8.21	571	11.19	643	14.23	704	18.7																	
22000	350	4.88	383	5.77	416	6.72	450	7.80	487	9.07	565	12.12	639	15.43	704	18.7																	
24000	369	5.96	401	6.94	431	7.92	461	8.99	492	10.19	562	13.12	634	16.58	700	20.2	760	23.8	812	29.4	909	39.9											
26000	2090		420	8.27	448	9.32	475	10.41	503	11.59	563	14.37	629	17.79	695	21.6	756	25.5	812	29.4	909	39.9											
28000	2250		439	9.79	466	10.92	492	12.06	517	13.25	570	15.93	628	19.20	690	23.0	751	27.1	808	31.3	909	39.9											
30000	2410				485	12.72	509	13.93	533	15.15	581	17.82	632	20.93	688	24.6	746	28.8	803	33.2	906	42.3											
32000	2570				504	14.72	528	16.01	550	17.30	594	20.00	640	23.04	690	26.5	743	30.6	798	35.1	901	44.6	994	54.3									
34000	2730				523	16.94	546	18.32	568	19.69	610	22.48	652	25.49	696	28.8	744	32.7	794	37.1	896	46.9	990	57.2	1074	67.5							
36000	2890				565	20.87	565	20.87	587	22.32	627	25.23	666	28.28	707	31.6	749	35.3	795	39.5	891	49.3	985	60.0	1071	70.9							
38000	3050				584	23.65	584	23.65	606	25.20	645	28.27	682	31.39	719	34.7	758	38.3	799	42.4	888	51.9	980	62.8	1066	74.2							
40000	3210				625	28.34	625	28.34	625	28.34	663	31.58	699	34.82	734	38.1	770	41.8	807	45.7	889	54.9	975	65.7	1061	77.4							
42000	3370				644	31.74	644	31.74	644	31.74	681	35.17	716	38.55	750	42.0	784	45.6	818	49.5	892	58.4	973	68.9	1056	80.7							
44000	3530										700	39.05	734	42.59	767	46.1	799	49.8	831	53.7	899	62.3	974	72.5	1052	84.2							
46000	3690										719	43.22	753	46.95	785	50.6	815	54.4	846	56.3	909	66.8	977	76.7	1051	88.1							
48000	3850										739	47.71	772	51.63	803	55.4	833	59.3	862	63.3	922	71.8	985	81.5	1052	92.5							
50000	4010										792	56.63	821	60.6	850	60.6	850	60.6	879	66.7	935	77.3	994	86.8	1057	97.5							
52000	4170										810	61.97	840	66.1	868	66.1	868	66.1	896	70.3	950	83.2	1006	92.6	1064	103.1							

(ALL CAPACITIES BASED ON STANDARD AIR (DENSITY .075# / CU. FT. - 70°F. - 29.29" HG. BAR.))

SIZE 3/4 — DF TYPE DFC UNITARY FAN — SINGLE FAN

MAX. RPM WITH REINFORCEMENT: 3450

STD. BALANCE RPM: 2400

TIP SPEED = RPM x 2.55

WHEEL BLADE DIA. = 9 3/4"

OUTLET AREA = 1.04 SQ. FT.

Volume of Air CFM	1/2" SP		3/4" SP		1" SP		1 1/4" SP		1 1/2" SP		2" SP		2 1/2" SP		3" SP		3 1/2" SP		4" SP		5" SP		6" SP		7" SP		8" SP	
	RPM	BHP	RPM	BHP	RPM	BHP	RPM	BHP	RPM	BHP	RPM	BHP	RPM	BHP	RPM	BHP	RPM	BHP	RPM	BHP	RPM	BHP	RPM	BHP	RPM	BHP	RPM	BHP
800	778	0.11	963	0.18	1106	0.29	1232	0.43	1357	0.53	1577	1.18	1743	1.44	1905	1.72	2062	2.02	2202	2.54	2464	3.47	2700	4.52	2911	6.43	3111	7.36
1000	788	0.15	982	0.22	1106	0.34	1232	0.43	1357	0.53	1577	1.18	1743	1.44	1905	1.72	2062	2.02	2202	2.54	2464	3.47	2700	4.52	2911	6.43	3111	7.36
1200	822	0.19	963	0.26	1100	0.34	1232	0.43	1357	0.53	1577	1.18	1743	1.44	1905	1.72	2062	2.02	2202	2.54	2464	3.47	2700	4.52	2911	6.43	3111	7.36
1400	869	0.25	993	0.33	1113	0.41	1232	0.50	1347	0.60	1565	0.82	1748	1.17	1912	1.57	2081	2.66	2208	3.00	2459	3.73	2700	4.52	2911	6.43	3111	7.36
1600	923	0.33	1035	0.41	1143	0.50	1249	0.59	1353	0.69	1556	0.92	1748	1.17	1912	1.57	2081	2.66	2208	3.00	2459	3.73	2700	4.52	2911	6.43	3111	7.36
1800	984	0.42	1086	0.51	1185	0.60	1280	0.70	1374	0.81	1559	1.04	1739	1.29	1912	1.57	2081	2.66	2208	3.00	2459	3.73	2700	4.52	2911	6.43	3111	7.36
2000	1049	0.53	1143	0.63	1234	0.73	1322	0.83	1408	0.94	1577	1.18	1743	1.44	1905	1.72	2062	2.02	2202	2.54	2464	3.47	2700	4.52	2911	6.43	3111	7.36
2200	2120		1204	0.77	1288	0.88	1370	0.99	1450	1.10	1606	1.34	1759	1.61	1909	1.90	2057	2.21	2202	2.54	2464	3.47	2700	4.52	2911	6.43	3111	7.36
2400	2310		1268	0.94	1347	1.05	1423	1.17	1498	1.29	1644	1.54	1786	1.81	1926	2.11	2064	2.42	2200	2.75	2464	3.47	2700	4.52	2911	6.43	3111	7.36
2600	2500		1143	0.63	1234	0.73	1322	0.83	1408	0.94	1577	1.18	1743	1.44	1905	1.72	2062	2.02	2202	2.54	2464	3.47	2700	4.52	2911	6.43	3111	7.36
2800	2690		1204	0.77	1288	0.88	1370	0.99	1450	1.10	1606	1.34	1759	1.61	1909	1.90	2057	2.21	2202	2.54	2464	3.47	2700	4.52	2911	6.43	3111	7.36
3000	2880		1268	0.94	1347	1.05	1423	1.17	1498	1.29	1644	1.54	1786	1.81	1926	2.11	2064	2.42	2200	2.75	2464	3.47	2700	4.52	2911	6.43	3111	7.36
3200	3080		1143	0.63	1234	0.73	1322	0.83	1408	0.94	1577	1.18	1743	1.44	1905	1.72	2062	2.02	2202	2.54	2464	3.47	2700	4.52	2911	6.43	3111	7.36
3400	3270		1204	0.77	1288	0.88	1370	0.99	1450	1.10	1606	1.34	1759	1.61	1909	1.90	2057	2.21	2202	2.54	2464	3.47	2700	4.52	2911	6.43	3111	7.36
3600	3460		1268	0.94	1347	1.05	1423	1.17	1498	1.29	1644	1.54	1786	1.81	1926	2.11	2064	2.42	2200	2.75	2464	3.47	2700	4.52	2911	6.43	3111	7.36
3800	3650		1143	0.63	1234	0.73	1322	0.83	1408	0.94	1577	1.18	1743	1.44	1905	1.72	2062	2.02	2202	2.54	2464	3.47	2700	4.52	2911	6.43	3111	7.36
4000	3850		1204	0.77	1288	0.88	1370	0.99	1450	1.10	1606	1.34	1759	1.61	1909	1.90	2057	2.21	2202	2.54	2464	3.47	2700	4.52	2911	6.43	3111	7.36
4200	4040		1268	0.94	1347	1.05	1423	1.17	1498	1.29	1644	1.54	1786	1.81	1926	2.11	2064	2.42	2200	2.75	2464	3.47	2700	4.52	2911	6.43	3111	7.36
4400	4230		1143	0.63	1234	0.73	1322	0.83	1408	0.94	1577	1.18	1743	1.44	1905	1.72	2062	2.02	2202	2.54	2464	3.47	2700	4.52	2911	6.43	3111	7.36
4600	4420		1204	0.77	1288	0.88	1370	0.99	1450	1.10	1606	1.34	1759	1.61	1909	1.90	2057	2.21	2202	2.54	2464	3.47	2700	4.52	2911	6.43	3111	7.36

(ALL CAPACITIES BASED ON STANDARD AIR (DENSITY .075# / CU. FT. - 70°F. - 29.29" HG. BAR.))

SIZE 3/4 — DF TYPE DFC DUPLEX FAN — DOUBLE FAN

MAX. RPM WITH REINFORCEMENT: 3450

STD. BALANCE RPM: 2400

TIP SPEED = RPM x 2.55

WHEEL BLADE DIA. = 9 3/4"

OUTLET AREA = 2.08 SQ. FT.

Volume of Air CFM	1/2" SP		3/4" SP		1" SP		1 1/4" SP		1 1/2" SP		2" SP		2 1/2" SP		3" SP		3 1/2" SP		4" SP		5" SP		6" SP		7" SP		8" SP	
	RPM	BHP	RPM	BHP	RPM	BHP	RPM	BHP	RPM	BHP	RPM	BHP	RPM	BHP	RPM	BHP	RPM	BHP	RPM	BHP	RPM	BHP	RPM	BHP	RPM	BHP	RPM	BHP
1600	799	0.24	975	0.37	1127	0.61	1261	0.91	1379	1.10	1593	1.71	1781	2.44	1952	3.29	2110	4.26	2257	5.36	2522	7.31	2762	9.50	2989	12.82	3173	13.73
2000	812	0.31	979	0.46	1133	0.73	1261	0.91	1384	1.28	1598	1.95	1781	2.44	1952	3.29	2110	4.26	2257	5.36	2522	7.31	2762	9.50	2989	12.82	3173	13.73
2400	843	0.41	992	0.56	1147	0.88	1266	1.08	1395	1.48	1607	2.22	1787	2.75	1984	4.51	2128	5.18	2265	5.88	2522	7.31	2762	9.50	2989	12.82	3173	13.73
2800	893	0.55	1019	0.70	1147	0.88	1266	1.08	1395	1.48	1607	2.22	1787	2.75	1984	4.51	2128	5.18	2265	5.88	2522	7.31	2762	9.50	2989	12.82	3173	13.73
3200	957	0.72	1062	0.88	1173	1.06	1286	1.26	1414	1.72	1624	2.52	1796	3.08	1968	4.07	2117	4.71	2257	5.36	2522	7.31	2762	9.50	2989	12.82	3173	13.73
3600	1030	0.94	1120	1.11	1215	1.29	1314	1.50	1444	2.01	1624	2.52	1796	3.08	1968	4.07	2117	4.71	2257	5.36	2522	7.31	2762	9.50	2989	12.82	3173	13.73
4000	1107	1.20	1187	1.38	1269	1.58	1355	1.79	1444	2.01	1624	2.52	1796	3.08	1968	4.07	2117	4.71	2257	5.36	2522	7.31	2762	9.50	2989	12.82	3173	13.73
4400	2120		1259	1.71	1332	1.92	1408	2.13	1487	2.36	1649	2.87	1812	3.45	1968	4.07	2117	4.71	2257	5.36	2522	7.31	2762	9.50	2989	12.82	3173	13.73
4800	2310		1337	2.10	1402	2.32	1470	2.55	1540	2.78	1685	3.30	1835	3.87	1984	4.51	2128	5.18	2265	5.88	2522	7.31	2762	9.50	2989	12.82	3173	13.73
5200	2500		1477	2.78	1538	3.02	1601	3.27	1661	3.56	1781	4.16	1910	4.96	2037	5.60	2166	6.29	2294	7.03	2539	8.61	2768	10.26	2989	12.82	3173	13.73
5600	2690		1555	3.32	1555	3.32	1611	3.56	1668	3.82	1786	4.37	1910	4.96	2037	5.60	2166	6.29	2294	7.03	2539	8.61	2768	10.26	2989	12.82	3173	13.73
6000	2880		1687	4.18	1687	4.18	1740	4.46	1740	4.46	1848	5.03	1960	5.63	2077	6.27	2196	6.96	2317	7.71	2553	9.32	2777	11.04	2989	12.82	3173	13.73
6400	3080		1766	4.89	1815	5.17	1815	5.17	1815	5.17	1915	5.76	2018	6.38	2125	7.04	2235	7.74	2347	8.48	2572	10.11	2790	11.88	2998	13.73	3173	13.73
6800	3270		1893	5.97	1893	5.97	1893	5.97	1893	5.97	1985	6.58	2081	7.22	2179	7.90	2281	8.61	2385	9.35	2596	10.98	2806	12.78	3009	14.68	3173	13.73
7200	3460		1766	4.89	1815	5.17	1815	5.17	1815	5.17	2059	7.49	2148	8.16	2239	8.85	2333	9.58	2430	10.33	2628	11.96	2828	13.77	3025	15.71	3173	13.73
7600	3650		1766	4.89	1815	5.17	1815	5.17	1815	5.17	2136	8.50	2219	9.19	2304	9.91	2392	10.65	2481	11.42	2666	13.06	2855	14.86	3044	16.82	3173	13.73
8000	3850		1687	4.18	1740	4.46	1740	4.46	1740	4.46	2215	9.61	2293	10.32	2373	11.06	2455	11.83	2538	12.62	2710	14.28	2889	16.09	3069	18.04	3173	13.73
8400	4040		1766	4.89	1815	5.17	1815	5.17	1815	5.17	2215	9.61	2293	10.32	2445	12.32	2521	13.11	2599	13.92	2761	15.62	2928	17.43	3099	19.39	3173	13.73
8800	4230		1766	4.89	1815	5.17	1815	5.17	1815	5.17	2519	13.69	2595	15.19	2595	15.19	2664	16.02	2734	16.88	2876	18.66	2973	18.91	3135	20.88	3173	13.73
9200	4420		1766	4.89	1815	5.17	1815	5.17	1815	5.17	2595	15.19	2595	15.19	2664	16.02	2734	16.88	2876	18.66	2973	18.91	3024	20.53	3135	20.88	3173	13.73

(ALL CAPACITIES BASED ON STANDARD AIR (DENSITY .075# / CU. FT. - 70°F. - 29.29" HG. BAR.))

SIZE 7/8 — DF TYPE DFC UNITARY FAN — SINGLE FAN

WHEEL BLADE DIA. = 11 3/8" STD. BALANCE RPM: 2025 MAX. RPM WITH REINFORCEMENT: 3450

TIP SPEED = RPM x 2.98

WHEEL BLADE DIA. = 11 3/8" STD. BALANCE RPM: 2025 MAX. RPM WITH REINFORCEMENT: 3450

TIP SPEED = RPM x 2.98

WHEEL BLADE DIA. = 11 3/8" STD. BALANCE RPM: 2025 MAX. RPM WITH REINFORCEMENT: 3450

TIP SPEED = RPM x 2.98

Volume of Air CFM	Outlet Velocity FPM	1/2" SP		3/4" SP		1" SP		1 1/4" SP		1 1/2" SP		2" SP		2 1/2" SP		3" SP		3 1/2" SP		4" SP		5" SP		6" SP		7" SP		8" SP		
		RPM	BHP	RPM	BHP	RPM	BHP	RPM	BHP	RPM	BHP	RPM	BHP	RPM	BHP	RPM	BHP	RPM	BHP	RPM	BHP	RPM	BHP	RPM	BHP	RPM	BHP	RPM	BHP	RPM
1300	802	648	0.16	815	0.26	942	0.41	1050	0.57																					
1500	925	654	0.20	797	0.29	923	0.44	1050	0.57																					
1700	1050	673	0.24	794	0.32	923	0.44	1050	0.57																					
1900	1170	699	0.29	806	0.38	916	0.48	1032	0.61	1147	0.76																			
2100	1300	726	0.35	827	0.44	923	0.55	1024	0.67	1129	0.81																			
2300	1420	755	0.42	852	0.52	941	0.63	1029	0.74	1122	0.88	1314	1.20																	
2500	1540	785	0.50	879	0.61	964	0.72	1045	0.84	1127	0.96	1299	1.27	1476	1.65															
2700	1670	817	0.59	908	0.71	990	0.83	1066	0.95	1141	1.08	1295	1.37	1458	1.73	1620	2.15													
2900	1790	860	0.69	937	0.82	1017	0.95	1091	1.07	1161	1.20	1302	1.49	1449	1.84	1602	2.25													
3100	1910	885	0.80	967	0.94	1046	1.08	1118	1.22	1185	1.35	1316	1.64	1449	1.97	1590	2.37	1733	2.81											
3300	2040	999	1.07	1075	1.22	1146	1.37	1211	1.51	1211	1.51	1335	1.81	1459	2.14	1586	2.51	1719	2.95	1854	3.43									
3500	2160	1032	1.22	1105	1.38	1174	1.54	1239	1.69	1239	1.69	1358	2.00	1474	2.33	1591	2.69	1713	3.11	1839	3.58									
3700	2280	1067	1.38	1136	1.55	1203	1.72	1267	1.88	1384	2.21	1494	2.54	1577	2.78	1604	2.90	1716	3.31	1832	3.76	2072	4.80							
3900	2410	1168	1.74	1233	1.91	1296	2.09	1411	2.43	1517	2.78	1621	3.14	1725	3.54	1833	3.97	1957	4.18	2048	4.51	2048	4.51	2252	6.59					
4100	2530	1202	1.94	1264	2.13	1325	2.31	1439	2.68	1542	3.04	1642	3.41	1740	3.80	1841	4.22	1949	4.62	2049	4.98	2049	4.98	2265	6.36					
4300	2650	1237	2.16	1296	2.35	1355	2.55	1467	2.94	1569	3.31	1665	3.69	1759	4.09	1854	4.51	1957	4.94	2048	5.46	2048	5.46	2252	6.59					
4500	2960	1382	3.01	1382	3.01	1435	3.22	1540	3.66	1639	4.09	1731	4.51	1818	4.94	1903	5.37	2072	6.29	2072	6.29	2245	7.34	2426	8.54					
4800	3270	1521	4.03	1521	4.03	1617	4.50	1712	4.99	1801	5.46	1901	6.01	2000	6.54	2100	7.06	2200	7.58	2200	7.58	2322	8.59	2461	10.75					
5800	3580	1789	6.65	1789	6.65	1869	7.20	1950	7.77	2030	8.34	2106	8.91	2249	10.02	2383	11.13	2512	12.26	2512	12.26	2450	12.81	2603	11.95					
6300	3890	2031	9.16	2031	9.16	2031	9.16	2031	9.16	2031	9.16	2031	9.16	2031	9.16	2031	9.16	2031	9.16	2031	9.16	2031	9.16	2031	9.16					
6800	4200	2031	9.16	2031	9.16	2031	9.16	2031	9.16	2031	9.16	2031	9.16	2031	9.16	2031	9.16	2031	9.16	2031	9.16	2031	9.16	2031	9.16					

(ALL CAPACITIES BASED ON STANDARD AIR (DENSITY .075# / CU. FT. - 70°F. - 29.29" HG. BAR.))

SIZE 7/8 — DF TYPE DFC DUPLEX FAN — DOUBLE FAN

WHEEL BLADE DIA. = 11 3/8" STD. BALANCE RPM: 2025 MAX. RPM WITH REINFORCEMENT: 3450

TIP SPEED = RPM x 2.98

WHEEL BLADE DIA. = 11 3/8" STD. BALANCE RPM: 2025 MAX. RPM WITH REINFORCEMENT: 3450

TIP SPEED = RPM x 2.98

WHEEL BLADE DIA. = 11 3/8" STD. BALANCE RPM: 2025 MAX. RPM WITH REINFORCEMENT: 3450

TIP SPEED = RPM x 2.98

Volume of Air CFM	Outlet Velocity FPM	1/2" SP		3/4" SP		1" SP		1 1/4" SP		1 1/2" SP		2" SP		2 1/2" SP		3" SP		3 1/2" SP		4" SP		5" SP		6" SP		7" SP		8" SP			
		RPM	BHP	RPM	BHP	RPM	BHP	RPM	BHP	RPM	BHP	RPM	BHP	RPM	BHP	RPM	BHP	RPM	BHP	RPM	BHP	RPM	BHP	RPM	BHP	RPM	BHP	RPM	BHP	RPM	BHP
2600	802	672	0.36	833	0.56	962	0.86	1074	1.22																						
3000	925	678	0.43	824	0.63	962	0.86	1074	1.22																						
3400	1060	694	0.52	825	0.72	953	0.96	1074	1.22																						
3800	1170	716	0.62	834	0.83	951	1.07	1065	1.34	1175	1.63																				
4200	1300	744	0.76	851	0.96	958	1.20	1063	1.47	1166	1.77																				
4600	1420	775	0.90	874	1.12	971	1.37	1068	1.64	1165	1.94	1351	2.60																		
5000	1540	809	1.07	901	1.30	991	1.56	1080	1.83	1170	2.13	1345	2.80	1614	3.55																
5400	1670	845	1.26	931	1.51	1015	1.78	1098	2.06	1181	2.36	1345	3.03	1506	3.79	1661	4.62														
5800	1790	883	1.49	963	1.75	1042	2.02	1120	2.31	1197	2.62	1351	3.30	1503	4.06	1652	4.90														
6200	1910	922	1.74	998	2.01	1072	2.30	1145	2.60	1218	2.92	1362	3.61	1506	4.37	1647	5.21	1785	6.11												
6600	2040	1034	2.31	1104	2.61	1104	2.61	1173	2.92	1242	3.25	1378	3.95	1513	4.72	1647	5.66	1780	6.47	1909	7.45										
7000	2160	1071	2.64	1138	2.95	1138	2.95	1204	3.28	1269	3.61	1398	4.33	1525	5.11	1653	6.06	1779	6.87	1903	7.85										
7400	2280	1110	3.01	1174	3.33	1236	3.67	1298	4.02	1329	4.46	1446	5.21	1561	6.02	1676	6.88	1790	7.81	1904	8.79										
7800	2410	1210	3.75	1270	4.10	1329	4.46	1446	5.21	1561	6.02	1676	6.88	1790	7.81	1904	8.79	2128	10.94												
8200	2530	1248	4.20	1305	4.67	1362	4.94	1473	5.72	1583	6.54	1693	7.42	1802	8.35	1911	9.34	2126	11.49	2336	13.85										
8600	2650	1287	4.70	1342	5.14	1396	5.46	1503	6.26	1608	7.11	1713	8.00	1817	8.94	1921	9.93	2128	12.09	2331	14.47										
9600	2960	1487	6.96	1487	6.96	1584	7.83	1679	8.73	1774	9.66	1868	10.64	1961	11.67	2057	12.68	2147	13.85	2332	16.24										
10600	3270	1672	8.76	1583	8.76	1672	9.69	1759	10.66	1846	11.65	1931	12.68	2017	13.74	2106	14.81	2186	16.99	2355	18.41										
11600	3580	1766	11.89	1766	11.89	1847	12.92	1926	14.46	2005	15.06	2084	16.18	2169	17.22	2242	18.51	2340	20.99	2447	23.99										
12600	3890	1864	14.46	1864	14.46	1939	15.55	2013	16.68	2087	17.82	2161	19.00	2240	20.34	2319	21.43	2400	23.99	2447	26.68										
13600	4200	1864	14.46	1864	14.46	1939	15.55	2013	16.68	2087	17.82	2161	19.00	2240	20.34	2319	21.43	2400	23.99	2447	26.68										

(ALL CAPACITIES BASED ON STANDARD AIR (DENSITY .075# / CU. FT. - 70°F. - 29.29" HG. BAR.))

SIZE 1 — DF TYPE DFC UNITARY FAN — SINGLE FAN

WHEEL BLADE DIA. = 13" TIP SPEED = RPM x 3.41 STD. BALANCE RPM: 1800 MAX. RPM WITH REINFORCEMENT: 2375

Volume of Air CFM	1/2" SP		3/4" SP		1" SP		1 1/4" SP		1 1/2" SP		2" SP		2 1/2" SP		3" SP		3 1/2" SP		4" SP		5" SP		6" SP		7" SP		8" SP			
	RPM	BHP	RPM	BHP	RPM	BHP	RPM	BHP	RPM	BHP	RPM	BHP	RPM	BHP	RPM	BHP	RPM	BHP	RPM	BHP	RPM	BHP	RPM	BHP	RPM	BHP	RPM	BHP		
1500	564	0.20	701	0.32	806	0.50	898	0.72	992	0.88																				
1800	571	0.25	691	0.37	798	0.57	892	0.81	981	0.98																				
2100	590	0.31	695	0.43	801	0.66	896	0.92	977	1.10	1135	1.48	1269	2.06																
2400	618	0.40	710	0.52	815	0.77	910	1.06	983	1.24	1129	1.63																		
2700	651	0.50	734	0.63	838	0.90	932	1.23	1021	1.48	1269	2.06																		
3000	686	0.62	763	0.76	868	1.06	961	1.42	1055	1.73	1269	2.06																		
3300	723	0.77	796	0.91	905	1.26	1001	1.65	1091	2.00	1269	2.06																		
3600	763	0.94	831	1.10	946	1.55	1046	1.84	1141	2.27	1269	2.06																		
3900	2110		868	1.31	929	1.48	1021	1.91	1107	2.40	1269	2.06																		
4200	2270		907	1.55	965	1.73	1021	1.91	1107	2.40	1269	2.06																		
4500	2430				1002	2.01	1055	2.20	1107	2.40	1269	2.06																		
4800	2590				1040	2.32	1091	2.53	1141	2.74	1269	2.06																		
5100	2760				1081	2.68	1129	2.89	1176	3.11	1268	3.57	1356	4.05	1443	4.55	1529	5.09	1614	5.67	1786	6.92	1956	8.31	2122	9.78	2282	12.42		
5400	2920				1168	3.29	1208	3.74	1251	4.27	1371	4.99	1450	5.52	1527	6.07	1602	6.63	1675	7.23	1821	8.50	1966	9.89	2112	11.40	2257	13.01		
5700	3080				1208	3.74			1290	4.47	1409	5.55	1485	6.10	1559	6.67	1631	7.25	1702	7.85	1841	9.14	1980	10.53	2118	12.04	2257	13.66		
6000	3240										1447	6.16	1520	6.73	1592	7.31	1662	7.91	1730	8.53	1864	9.83	1996	11.24	2129	12.75	2261	14.37		
6300	3410										1486	6.82	1557	7.41	1626	8.02	1694	8.63	1760	9.27	11889	10.59	2017	12.01	2143	13.52	2270	15.15		
6600	3570										1526	7.54	1595	8.15	1662	8.77	1727	9.41	1792	10.06	1917	11.41	2040	12.84	2161	14.37	2282	15.99		
6900	3730																													
7200	3890																													
7500	4050																													

(ALL CAPACITIES BASED ON STANDARD AIR (DENSITY .075#/CU. FT. - 70°F. - 29.29" HG. BAR.))

SIZE 1 — DF TYPE DFC DUPLEX FAN — DOUBLE FAN

WHEEL BLADE DIA. = 13" TIP SPEED = RPM x 3.41 STD. BALANCE RPM: 1800 MAX. RPM WITH REINFORCEMENT: 2375

Volume of Air CFM	1/2" SP		3/4" SP		1" SP		1 1/4" SP		1 1/2" SP		2" SP		2 1/2" SP		3" SP		3 1/2" SP		4" SP		5" SP		6" SP		7" SP		8" SP		
	RPM	BHP	RPM	BHP	RPM	BHP	RPM	BHP	RPM	BHP	RPM	BHP	RPM	BHP	RPM	BHP	RPM	BHP	RPM	BHP	RPM	BHP	RPM	BHP	RPM	BHP	RPM	BHP	
3000	581	0.43	708	0.64	818	1.02	915	1.49	1001	1.80																			
3600	591	0.54	711	0.77	821	1.20	919	1.72	1003	2.05																			
4200	610	0.68	719	0.93	829	1.41	928	1.98	1008	2.33	1158	3.07	1294	4.27															
4800	639	0.86	734	1.11	843	1.65	938	2.28	1018	2.65	1162	3.44																	
5400	677	1.09	758	1.35	865	1.94	942	2.58	1032	3.02	1170	3.84	1298	4.72	1418	5.63	1532	7.17	1638	8.89									
6000	719	1.38	790	1.64	885	2.30	962	2.65	1053	3.45	1181	4.30	1305	5.21	1422	6.18	1536	7.81	1638	9.59									
6600	765	1.72	828	2.00	929	2.73	990	3.08	1080	3.96	1198	4.81	1315	5.76	1428	6.77	1536	8.59	1638	10.38									
7200	813	2.13	870	2.42	968	3.23	1023	3.58	1112	4.55	1220	5.41	1329	6.37	1438	7.41	1542	9.24	1649	11.26									
7800	2110		915	2.90	1011	3.81	1061	4.17	1112	4.55	1247	6.09	1348	7.06	1451	8.12	1552	10.05	1658	12.84									
8400	2270		962	3.47	1056	4.46	1102	4.84	1149	5.23	1279	6.87	1372	7.84	1468	8.91	1564	10.96	1671	13.78									
9000	2430				1103	5.20	1145	5.59	1189	6.00	1314	7.75	1401	8.73	1490	9.80	1581	12.18	1671	15.66									
9600	2590				1151	6.04			1231	6.86	1353	8.73	1433	9.72	1516	10.80	1601	13.14	1671	17.51									
10200	2760								1276	7.82	1395	9.82	1469	10.83	1546	11.91	1626	13.07	1706	18.46									
10800	2920								1322	8.88	1438	11.02	1508	12.05	1580	13.14	1654	14.31	1730	18.28									
11400	3080								1370	10.05	1483	12.33	1549	13.38	1616	14.49	1686	15.67	1757	19.03									
12000	3240										1500	13.76	1592	14.84	1655	15.97	1721	17.17	1787	20.07									
12600	3410										1577	15.32	1636	16.43	1697	17.58	1758	18.80	1821	20.70									
13200	3570										1626	17.00	1682	18.14	1739	19.33	1798	20.56	1857	21.85									
13800	3730														1784	21.21	1839	22.47	1895	23.78									
14400	3890																												
15000	4050																												

(ALL CAPACITIES BASED ON STANDARD AIR (DENSITY .075#/CU. FT. - 70°F. - 29.29" HG. BAR.))

SIZE 1 1/8 — DF TYPE DFC UNITARY FAN — SINGLE FAN

OUTLET AREA = 2.62 SQ. FT. WHEEL BLADE DIA. = 14 5/8" TIP SPEED = RPM x 3.83 STD. BALANCE RPM: 1800 MAX. RPM WITH REINFORCEMENT: 2115

Volume of Air CFM	Outlet Velocity FPM	1/2" SP		3/4" SP		1" SP		1 1/4" SP		1 1/2" SP		2" SP		2 1/2" SP		3" SP		3 1/2" SP		4" SP		5" SP		6" SP		7" SP		8" SP						
		RPM	BHP	RPM	BHP	RPM	BHP	RPM	BHP	RPM	BHP	RPM	BHP	RPM	BHP	RPM	BHP	RPM	BHP	RPM	BHP	RPM	BHP	RPM	BHP	RPM	BHP	RPM	BHP					
2100	801	525	0.30	664	0.47																													
2400	916	513	0.32	653	0.52	767	0.72																											
2700	1030	515	0.37	636	0.56	757	0.79	857	1.01																									
3000	1150	529	0.44	627	0.61	741	0.84	847	1.09	938	1.34																							
3500	1340	560	0.58	639	0.75	724	0.95	821	1.21	918	1.50	1082	2.08																					
4000	1530	594	0.75	667	0.94	736	1.13	809	1.36	892	1.63	1062	2.29	1208	2.96																			
4500	1720	629	0.96	700	1.17	763	1.38	824	1.59	888	1.84	1035	2.47	1186	3.21	1319	3.97																	
5000	1910	670	1.22	734	1.44	795	1.67	851	1.90	906	2.14	1024	2.71	1158	3.43	1295	4.26	1419	5.11															
5500	2100			770	1.76	829	2.01	883	2.27	933	2.52	1034	3.06	1145	3.72	1268	4.52	1393	5.43	1510	6.36													
6000	2290			810	2.14			916	2.68	965	2.96	1057	3.51	1151	4.13	1254	4.87	1367	5.74	1482	6.72	1695	8.74											
6500	2480					900	2.85	951	3.15	999	3.45	1087	4.04	1171	4.66	1259	5.35	1354	6.15	1458	7.08	1669	9.21	1807	12.50	1985	15.02							
7000	2670					941	3.37	987	3.67	1033	4.00	1120	4.64	1199	5.29	1277	5.96	1359	6.72	1448	7.57	1641	9.64	1835	11.98									
7500	2860							1025	4.27	1068	4.60	1153	5.30	1230	5.99	1304	6.68	1377	7.42	1454	8.23	1623	10.16	1807	12.50	1985	15.02							
8000	3050									1106	5.29	1187	6.02	1263	6.77	1334	7.50	1402	8.24	1471	9.03	1619	10.84	1784	13.06	1957	15.63							
8500	3240									1146	6.06	1222	6.82	1297	7.61	1366	8.39	1432	9.17	1496	9.97	1628	11.72	1773	13.79	1932	16.26	2095	19.02					
9000	3440											1259	7.69	1331	8.53	1400	9.36	1464	10.19	1525	11.01	1647	12.75	1776	14.72	1918	17.04	2069	19.73					
9500	3630											1298	8.67	1366	9.52	1434	10.41	1497	11.29	1557	12.15	1673	13.92	1790	15.85	1916	18.04	2052	20.58					
10000	3820											1339	9.75	1403	10.61	1468	11.53	1531	12.47	1590	13.39	1702	15.22	1811	17.14	1925	19.25	2047	21.66					
10500	4010													1441	11.80	1503	12.75	1565	13.73	1624	14.71	1733	16.63	1837	18.58	1943	20.66	2053	22.97					
11000	4200													1482	13.12	1540	14.07	1600	15.08	1658	16.11	1766	18.14	1867	20.16	1966	22.25	2068	24.49					

(ALL CAPACITIES BASED ON STANDARD AIR (DENSITY .075# / CU. FT. - 70°F. - 29.29" HG. BAR.))

SIZE 1 1/8 — DF TYPE DFC DUPLEX FAN — DOUBLE FAN

OUTLET AREA = 5.24 SQ. FT. WHEEL BLADE DIA. = 14 5/8" TIP SPEED = RPM x 3.83 STD. BALANCE RPM: 1800 MAX. RPM WITH REINFORCEMENT: 2115

Volume of Air CFM	Outlet Velocity FPM	1/2" SP		3/4" SP		1" SP		1 1/4" SP		1 1/2" SP		2" SP		2 1/2" SP		3" SP		3 1/2" SP		4" SP		5" SP		6" SP		7" SP		8" SP								
		RPM	BHP	RPM	BHP	RPM	BHP	RPM	BHP	RPM	BHP	RPM	BHP	RPM	BHP	RPM	BHP	RPM	BHP	RPM	BHP	RPM	BHP	RPM	BHP	RPM	BHP	RPM	BHP							
4200	801	561	0.59	696	1.10																															
4800	916	536	0.72	695	1.21	803	1.68																													
5400	1030	523	0.78	677	1.29	804	1.84	888	2.36																											
6000	1150	528	0.90	652	1.34	791	1.95	899	2.55	985	3.13																									
7000	1340	554	1.19	641	1.55	750	2.07	873	2.77	97	3.9	1138	4.67																							
8000	1530	587	1.55	662	1.92	740	2.35	834	2.93	942	3.69	1131	5.35	1273	6.92																					
9000	1720	624	2.00	692	2.40	758	2.82	828	3.31	909	3.93	1098	5.64	1264	7.50	1394	9.29																			
10000	1910	666	2.54	726	2.98	786	3.42	846	3.90	908	4.43	1058	5.88	1230	7.86	1381	9.94	1505	11.93																	
11000	2100			764	3.65	819	4.14	873	4.64	927	5.16	1045	6.41	1188	8.14	1346	10.35	1487	12.64	605	14.86															
12000	2290			805	4.45	855	4.97	906	5.50	955	6.05	1056	7.23	1169	8.71	1304	10.68	1448	13.08	1582	15.60	1798	20.43													
13000	2480					894	5.92	941	6.50	988	7.07	1079	8.27	1174	9.64	1282	11.33	1407	13.48	1541	16.05	1781	21.47													
14000	2670					935	7.02	978	7.62	1022	8.24	1108	9.49	1192	10.63	1283	12.37	1385	14.23	1500	16.54	1746	22.16	1957	27.96											
15000	2860							1018	8.89	1059	9.54	1140	10.88	1219	12.24	1299	13.72	1385	15.41	1480	17.43	1702	22.67	1926	28.90											
16000	3050									1098	11.01	1174	12.61	1249	13.84	1323	15.33	1399	16.95	1480	18.78	1668	23.43	1883	29.54	2088	36.23									
17000	3240									1139	12.64																									
18000	3440											1249	15.99	1317	17.58	1384	19.18	1449	20.82	1515	22.54	1656	26.46	1817	31.43	2004	37.77									
19000	3630											1289	18.05	1353	19.71	1417	21.40	1480	23.10	1542	24.84	1670	28.64	1810	33.19	1972	38.90									
20000	3820											1331	20.34	1391	22.04	1453	23.80	1513	25.58	1573	27.38	1691	31.17	1817	35.47	1957	40.66									
21000	4010													1431	24.58	1489	26.41	1548	28.27	1605	30.15	1717	33.99	1833	38.19	1957	43.03	2095	48.83							
22000	4200													1473	27.36	1527	29.24	1583	31.18	1639	33.13	1747	37.09	1855	41.26	1968	45.90	2090	51.27							

(ALL CAPACITIES BASED ON STANDARD AIR (DENSITY .075# / CU. FT. - 70°F. - 29.29" HG. BAR.))

SIZE 1 1/4 — DF TYPE DFC UNITARY FAN — SINGLE FAN

WHEEL BLADE DIA. = 16 1/4" TIP SPEED = RPM x 4.25 STD. BALANCE RPM: 1800 MAX. RPM WITH REINFORCEMENT: 1906

OUTLET AREA = 2.88 SQ. FT.

Volume of Air CFM	1/2" SP		3/4" SP		1" SP		1 1/4" SP		1 1/2" SP		2" SP		2 1/2" SP		3" SP		3 1/2" SP		4" SP		5" SP		6" SP		7" SP		8" SP	
	RPM	BHP	RPM	BHP	RPM	BHP	RPM	BHP	RPM	BHP	RPM	BHP	RPM	BHP	RPM	BHP	RPM	BHP	RPM	BHP	RPM	BHP	RPM	BHP	RPM	BHP	RPM	BHP
2300	440	0.29	570	0.49	648	0.77	713	1.09	803	1.39	928	2.13	1034	3.00	1126	3.96	1208	5.03	1282	6.20	1392	8.84	1558	11.52	1688	14.45	1812	18.12
2800	444	0.37	540	0.53	622	0.83	693	1.20	770	1.47	895	3.13	981	3.70	1075	4.40	1177	5.23	1253	6.45	1403	9.25	1519	12.57	1659	14.90	1778	18.84
3300	467	0.49	540	0.64	622	0.83	693	1.20	770	1.47	895	3.13	981	3.70	1075	4.40	1177	5.23	1253	6.45	1403	9.25	1519	12.57	1659	14.90	1778	18.84
3800	495	0.64	559	0.81	623	0.98	698	1.40	758	1.63	894	3.13	994	4.18	1074	4.82	1160	5.57	1253	6.45	1403	9.25	1519	12.57	1659	14.90	1778	18.84
4300	525	0.83	585	1.01	642	1.20	717	1.67	768	1.69	877	2.42	1000	3.12	1126	3.96	1208	5.03	1282	6.20	1392	8.84	1558	11.52	1688	14.45	1812	18.12
4800	556	1.05	614	1.26	667	1.46	717	1.67	768	1.69	877	2.42	1000	3.12	1126	3.96	1208	5.03	1282	6.20	1392	8.84	1558	11.52	1688	14.45	1812	18.12
5300	590	1.30	645	1.54	695	1.77	742	2.00	787	2.23	880	2.73	981	3.35	1093	4.12	1208	5.03	1282	6.20	1392	8.84	1558	11.52	1688	14.45	1812	18.12
5800	622	1.54	676	1.87	725	2.13	770	2.38	813	2.62	895	3.13	981	3.70	1075	4.40	1177	5.23	1253	6.45	1403	9.25	1519	12.57	1659	14.90	1778	18.12
6300	656	1.79	710	2.24	756	2.52	799	2.80	840	3.07	918	3.61	994	4.18	1074	4.82	1160	5.57	1253	6.45	1403	9.25	1519	12.57	1659	14.90	1778	18.12
6800	690	2.04	744	2.66	788	2.97	830	3.27	870	3.57	944	4.16	1015	4.74	1086	5.37	1160	6.06	1240	6.87	1414	8.84	1558	11.52	1688	14.45	1812	18.12
7300	725	2.29	770	2.91	813	3.27	861	3.80	900	4.13	972	4.76	1039	5.38	1105	6.02	1171	6.70	1241	7.45	1392	9.25	1519	12.57	1659	14.90	1778	18.12
7800	760	2.54	800	3.16	856	3.61	894	4.39	931	4.74	1001	5.43	1066	6.10	1128	6.76	1190	7.45	1252	8.18	1385	9.86	1531	11.94	1688	14.45	1812	18.12
8300	795	2.79	830	3.41	894	4.04	927	5.04	963	5.41	1031	6.16	1094	6.88	1154	7.59	1213	8.30	1270	9.03	1390	10.65	1519	12.57	1659	14.90	1778	18.12
8800	830	3.04	860	3.66	927	4.29	962	5.76	996	6.16	1062	6.95	1124	7.73	1182	8.48	1238	9.23	1293	9.99	1403	11.59	1518	13.41	1643	15.57	1778	18.12
9300	865	3.29	890	3.88	956	4.53	1000	6.01	1030	6.97	1093	7.81	1154	8.64	1211	9.46	1265	10.25	1318	11.04	1421	12.67	1527	14.44	1639	16.47	1759	18.84
9800	900	3.54	920	4.11	990	4.78	1034	6.34	1064	7.26	1126	8.56	1185	9.63	1241	10.50	1294	11.35	1345	12.18	1443	13.86	1542	15.63	1644	17.58	1752	19.80
10300	935	3.79	950	4.36	1020	5.03	1064	6.57	1094	7.49	1160	9.71	1216	10.70	1271	11.62	1323	12.53	1373	13.41	1468	15.16	1561	16.96	1656	18.88	1754	21.01
10800	970	4.04	980	4.61	1050	5.28	1094	6.78	1124	7.73	1194	10.88	1249	11.85	1302	12.82	1353	13.78	1402	14.72	1495	16.57	1584	18.41	1673	20.34	1764	22.42
11300	1005	4.29	1010	4.86	1080	5.53	1124	7.00	1154	8.64	1229	12.08	1282	13.09	1333	14.11	1383	15.12	1432	16.12	1523	18.07	1609	19.99	1694	21.95	1780	24.01
11800	1040	4.54	1040	5.11	1110	5.78	1154	7.26	1184	8.90	1264	12.64	1318	13.68	1366	15.49	1415	16.55	1462	17.61	1551	19.66	1636	21.67	1718	23.69	1799	25.77
12300	1075	4.79	1070	5.36	1140	6.01	1184	7.49	1214	8.19	1294	13.28	1338	14.28	1386	15.96	1446	18.08	1493	19.18	1581	21.35	1664	23.46	1743	25.55	1821	27.67

(ALL CAPACITIES BASED ON STANDARD AIR (DENSITY .075# / CU. FT. - 70°F. - 29.29" HG. BAR.))

SIZE 1 1/4 — DF TYPE DFC DUPLEX FAN — DOUBLE FAN

WHEEL BLADE DIA. = 16 1/4" TIP SPEED = RPM x 4.25 STD. BALANCE RPM: 1800 MAX. RPM WITH REINFORCEMENT: 1906

OUTLET AREA = 5.76 SQ. FT.

Volume of Air CFM	1/2" SP		3/4" SP		1" SP		1 1/4" SP		1 1/2" SP		2" SP		2 1/2" SP		3" SP		3 1/2" SP		4" SP		5" SP		6" SP		7" SP		8" SP			
	RPM	BHP	RPM	BHP	RPM	BHP	RPM	BHP	RPM	BHP	RPM	BHP	RPM	BHP	RPM	BHP	RPM	BHP	RPM	BHP	RPM	BHP	RPM	BHP	RPM	BHP	RPM	BHP		
4600	457	0.65	567	1.00	653	1.61	728	2.35	802	2.86	926	4.39	1035	6.19	1132	8.27	1221	10.62	1303	13.23	1444	19.25	1593	24.89	1714	32.78	1833	39.77		
5600	455	0.79	560	1.18	645	1.85	720	2.66	794	3.22	918	4.87	1035	6.19	1132	8.27	1221	10.62	1303	13.23	1444	19.25	1593	24.89	1714	32.78	1833	39.77		
6600	469	0.99	557	1.39	645	1.85	720	2.66	794	3.22	918	4.87	1035	6.19	1132	8.27	1221	10.62	1303	13.23	1444	19.25	1593	24.89	1714	32.78	1833	39.77		
7600	492	1.27	566	1.66	643	2.13	719	3.02	788	3.61	918	4.87	1035	6.19	1132	8.27	1221	10.62	1303	13.23	1444	19.25	1593	24.89	1714	32.78	1833	39.77		
8600	520	1.62	585	2.02	651	2.49	727	3.47	788	4.06	911	5.38	1027	6.80	1132	8.27	1221	10.62	1303	13.23	1444	19.25	1593	24.89	1714	32.78	1833	39.77		
9600	551	2.04	610	2.47	668	2.94	727	3.47	788	4.06	911	5.38	1027	6.80	1132	8.27	1221	10.62	1303	13.23	1444	19.25	1593	24.89	1714	32.78	1833	39.77		
10600	583	2.54	639	3.01	692	3.50	744	4.03	798	4.62	909	5.94	1019	7.43	1124	9.00	1221	10.62	1303	13.23	1444	19.25	1593	24.89	1714	32.78	1833	39.77		
11600	610	3.04	670	3.64	719	4.16	767	4.70	815	5.29	914	6.61	1016	8.11	1117	9.75	1213	12.59	1204	14.40	1285	16.34	1444	20.50	1574	29.53	1706	34.55	1833	39.77
12600	640	3.54	702	4.36	749	4.92	794	5.49	838	6.09	927	7.41	1019	8.91	1113	10.57	1206	12.35	1295	14.21	1386	17.58	1438	21.81	1585	26.36	1701	36.41	1821	41.77
13600	670	4.04	735	5.19	780	5.79	822	6.39	864	7.01	946	8.35	1029	9.85	1115	11.51	1202	13.31	1288	15.23	1379	18.99	1437	23.24	1578	27.89	1714	32.78	1833	39.77
14600	700	4.54	770	6.01	812	6.77	853	7.41	892	8.06	969	9.44	1045	10.94	1123	12.59	1204	14.40	1285	16.34	1379	18.99	1437	23.24	1578	27.89	1714	32.78	1833	39.77
15600	730	5.04	802	6.84	845	7.87	885	8.55	922	9.24	995	10.66	1066	12.19	1138	13.84	1212	15.64	1287	17.58	1379	18.99	1437	23.24	1578	27.89	1714	32.78	1833	39.77
16600	760	5.54	835	7.69	877	8.36	917	9.83	953	10.55	1023	12.03	1090	13.59	1157	15.26	1225	17.06	1294	18.99	1379	18.99	1437	23.24	1578	27.89	1714	32.78	1833	39.77
17600	790	6.04	870	8.51	909	8.87	951	11.24	986	12.00	1052	13.00	1116	15.16	1179	16.85	1243	18.66	1307	20.59	1440	24.83	1574	29.53	1706	34.55	1833	39.77		
18600	820	6.54	902	9.31	941	9.37	989	11.93	1018	13.60	1083	15.22	1145	16.89	1205	18.62	1264	20.45	1324	22.39	1448	26.62	1574	29.53	1706	34.55	1833	39.77		
19600	850	7.04	935	10.13	971	10.00	1020	12.66	1052	13.00	1116	15.16	1179	16.85	1243	18.66	1307	20.59	1440	24.83	1574	29.53	1706	34.55	1833	39.77	1906	25.77	1999	25.77
20600	880	7.54	970	10.93	1001	10.56	1050	13.16	1083	15.22	1145	16.89	1205	18.62	1264	20.45	1324	22.39	1448	26.62	1574	29.53	1706	34.55	1833	39.77	1906	25.77	1999	25.77
21600	910	8.04	1005	11.73	1031	11.11	1080	13.71	1113	16.36	1171	17.05	1205	20.85	1260	22.69	1315	24.60	1369	26.58	1477	30.83	1588	35.50	1702	40.61	1817	46.10	1818	48.53
22600	940	8.54	1040	12.53	1061	11.66	1110	14.26	1143	16.91	1201	18.11	1236	23.09	1290	25.00	1343	26.96	1394	28.98	1497	33.26	1602	37.94	1709	43.03	1818	48.53	1906	25.77
23600	970	9.04	107																											

SIZE 1 3/8 — DF TYPE DFC UNITARY FAN — SINGLE FAN

OUTLET AREA = 3.52 SQ. FT. WHEEL BLADE DIA. = 17 7/8" TIP SPEED = RPM x 4.68 STD. BALANCE RPM: 1700 MAX. RPM WITH REINFORCEMENT: 1731

Volume of Air CFM	1/2" SP		3/4" SP		1" SP		1 1/4" SP		1 1/2" SP		2" SP		2 1/2" SP		3" SP		3 1/2" SP		4" SP		5" SP		6" SP		7" SP		8" SP			
	RPM	BHP	RPM	BHP	RPM	BHP	RPM	BHP	RPM	BHP	RPM	BHP	RPM	BHP	RPM	BHP	RPM	BHP	RPM	BHP	RPM	BHP	RPM	BHP	RPM	BHP	RPM	BHP		
2800	400	0.35	518	0.59																										
3400	404	0.45	491	0.65	589	0.93				1.68																				
4000	424	0.60	491	0.78	565	1.01	648	1.32	730	1.68																				
4600	450	0.78	508	0.98	567	1.19	630	1.45	700	1.78																				
5200	477	1.00	532	1.23	583	1.45	635	1.69	690	1.97																				
5800	505	1.26	558	1.52	606	1.77	652	2.02	698	2.28	797	2.93	909	3.78																
6400	536	1.57	585	1.86	631	2.14	674	2.41	715	2.69	800	3.29	892	4.04	994	4.98	1099	6.09												
7000	565	1.92	614	2.24	658	2.56	699	2.86	738	3.16	814	3.77	892	4.47	977	5.31	1070	6.32	1167	7.50										
7600	600	2.26	644	2.69	686	3.03	726	3.37	763	3.70	834	4.34	903	5.03	976	5.81	1055	6.72	1140	7.80										
8200	630	2.61	675	3.20	715	3.57	753	3.93	789	4.30	857	5.00	871	5.70	966	6.46	1055	7.31	1127	8.28	1286	10.68								
8800	660	2.96	705	3.59	745	4.17	781	4.56	816	4.96	882	5.72	943	6.47	1003	7.24	1064	8.06	1128	8.97	1266	11.16	1418	13.92						
9400	690	3.31	735	3.98	776	4.84	811	5.26	844	5.69	908	6.52	968	7.32	1024	8.12	1080	8.95	1138	9.84	1259	11.88	1393	14.41						
10000	720	3.66	765	4.36	806	5.54	841	6.04	873	6.49	935	7.39	993	8.25	1048	9.10	1101	9.96	1154	10.85	1263	12.81	1381	15.15	1510	17.99				
10600	750	4.01	795	4.75	836	6.21	872	6.90	903	7.37	963	8.33	1020	9.27	1073	10.18	1124	11.08	1173	11.99	1274	13.93	1380	16.14	1494	18.77	1618	21.87		
11200	780	4.36	825	5.10	866	6.88	899	7.41	934	8.35	992	9.36	1047	10.36	1099	11.34	1148	12.29	1196	13.24	1290	15.20	1387	17.36	1490	19.82	1600	22.70		
11800	810	4.71	855	5.45	896	7.40	929	8.01	966	9.41	1021	10.47	1074	11.54	1125	12.58	1174	13.60	1220	14.60	1310	16.63	1400	18.77	1494	21.14	1593	23.84		
12400	840	5.06	885	5.80	930	8.00	959	8.72	995	10.12	1051	11.69	1103	12.81	1153	13.92	1200	15.00	1245	16.07	1332	18.18	1418	20.35	1504	22.67	1594	25.25		
13000	870	5.41	915	6.15	980	8.59	1000	9.43	1030	10.78	1082	13.00	1132	14.17	1180	15.35	1227	16.50	1272	17.63	1356	19.85	1438	22.08	1519	24.41	1603	26.92		
13600	900	5.76	945	6.50	1015	9.18	1044	10.14	1069	11.14	1114	14.43	1162	15.65	1209	16.88	1254	18.10	1298	19.30	1381	21.64	1460	23.95	1538	26.31	1616	28.81		
14200	930	6.11	975	6.85	1050	9.77	1078	10.54	1103	11.54	1144	15.65			1238	18.52	1282	19.80	1325	21.07	1407	23.53	1484	25.95	1559	28.38	1633	30.89		
14800	960	6.46	1005	7.20	1085	10.12	1111	10.94	1132	11.94	1174	16.88			1268	20.27	1311	21.61	1353	22.94	1433	25.55	1509	28.08	1582	30.60	1653	33.15		

(ALL CAPACITIES BASED ON STANDARD AIR (DENSITY .075# / CU. FT. - 70°F. - 29.29" HG. BAR.))

SIZE 1 3/8 — DF TYPE DFC DUPLEX FAN — DOUBLE FAN

OUTLET AREA = 7.04 SQ. FT. WHEEL BLADE DIA. = 17 7/8" TIP SPEED = RPM x 4.68 STD. BALANCE RPM: 1700 MAX. RPM WITH REINFORCEMENT: 1731

Volume of Air CFM	1/2" SP		3/4" SP		1" SP		1 1/4" SP		1 1/2" SP		2" SP		2 1/2" SP		3" SP		3 1/2" SP		4" SP		5" SP		6" SP		7" SP		8" SP			
	RPM	BHP	RPM	BHP	RPM	BHP	RPM	BHP	RPM	BHP	RPM	BHP	RPM	BHP	RPM	BHP	RPM	BHP	RPM	BHP	RPM	BHP	RPM	BHP	RPM	BHP	RPM	BHP		
5600	415	0.79	516	1.21																										
6800	414	0.96	509	1.43	594	1.95																								
8000	426	1.21	506	1.68	587	2.24	661	2.84	729	3.46																				
9200	447	1.54	514	2.02	584	2.58	655	3.22	722	3.90																				
10400	473	1.95	532	2.45	592	3.01	653	3.65	716	4.36	835	5.89	933	8.22	1022	10.87	1110	12.83	1185	15.98										
11600	500	2.46	555	2.98	607	3.56	661	4.19	717	4.90	828	6.50	926	10.74	1012	12.75	1096	14.91	1178	17.15										
12800	530	3.06	580	3.62	628	4.22	676	4.86	725	5.57	826	7.17	927	8.97	1015	11.77	1103	13.85	1185	15.98										
14000	560	3.66	608	4.38	653	5.00	697	5.67	741	6.38	831	7.97	923	9.79	1015	11.77	1103	13.85	1185	15.98										
15200	590	4.26	637	5.24	680	5.91	721	6.60	761	7.33	842	8.93	926	10.74	1012	12.75	1096	14.91	1178	17.15										
16400	620	4.86	667	6.23	708	6.95	746	7.68	784	8.43	859	10.05	935	11.86	1013	13.87	1093	16.05	1171	18.37	1320	23.24								
17600	650	5.46	697	7.01	737	8.12	774	8.89	810	9.68	879	11.34	949	13.16	1013	15.16	1094	17.34	1168	19.69	1313	24.73	1448	30.02						
18800	680	6.06	727	7.79	767	9.44	802	10.26	837	11.08	903	12.80	968	14.64	1033	16.65	1101	18.82	1170	21.17	1308	26.29	1441	31.78						
20000	710	6.66	757	8.49	797	10.66	832	11.78	865	12.65	928	14.43	989	16.32	1050	18.34	1113	20.51	1176	22.85	1306	27.99	1435	33.61	1558	39.52				
21200	740	7.26	787	9.19	827	11.88	862	13.46	894	14.38	954	16.24	1013	18.18	1070	20.23	1128	22.42	1187	24.75	1308	29.89	1431	35.56	1552	41.63	1667	47.93		
22400	770	7.86	817	9.89	857	13.08	892	14.26	923	16.28	982	18.24	1038	20.24	1093	22.64	1147	24.55	1202	26.89	1315	32.01	1431	37.69	1547	43.85	1660	50.32		
23600	800	8.46	847	10.59	887	14.28	920	15.14	953	18.36	1011	20.41	1065	22.50	1117	24.65	1169	26.90	1221	29.26	1326	34.38	1435	40.05	1545	46.24	1655	52.82		
24800	830	9.06	877	11.29	917	15.48	948	16.02	983	19.48	1040	22.79	1092	24.96	1143	27.18	1193	29.48	1242	31.87	1341	37.01	1443	42.67	1547	48.85	1652	55.49		
26000	860	9.66	907	12.00	947	16.72	977	16.90	1013	20.60	1069	25.36	1121	27.63	1170	29.93	1218	32.29	1265	34.72	1359	39.90	1455	45.56	1553	51.73	1653	58.37		
27200	890	10.26	937	12.71	977	17.96	1002	17.78	1036	21.72	1100	28.15	1149	30.51	1197	32.90	1244	35.33	1289	37.82	1379	43.07	1469	48.74	1562	54.89	1657	61.53		
28400	920	10.86	967	13.42	1007	18.92	1031	18.66	1061	22.82	1126	30.00	1171	32.41	1226	36.09	1271	38.60	1315	41.16	1401	46.50	1487	52.21	1575	58.36	1664	64.97		
29600	950	11.46	997	14.13	1037	20.00	1056	19.56	1086	23.92	1151	31.89	1194	34.31	1254	39.52	1298	42.12	1341	44.75	1425	50.20	1507	55.97	1590	62.14	1675	68.74		

(ALL CAPACITIES BASED ON STANDARD AIR (DENSITY .075# / CU. FT. - 70°F. - 29.29" HG. BAR.))

SIZE 1 3/4 — DF TYPE DFC UNITARY FAN — SINGLE FAN

OUTLET AREA = 5.69 SQ. FT. WHEEL BLADE DIA. = 22 3/4" TIP SPEED = RPM x 5.95 STD. BALANCE RPM: 1400 MAX. RPM WITH REINFORCEMENT: 1450

Volume of Air CFM	1/2" SP		3/4" SP		1" SP		1 1/4" SP		1 1/2" SP		2" SP		2 1/2" SP		3" SP		3 1/2" SP		4" SP		5" SP		6" SP		7" SP		8" SP						
	RPM	BHP	RPM	BHP	RPM	BHP	RPM	BHP	RPM	BHP	RPM	BHP	RPM	BHP	RPM	BHP	RPM	BHP	RPM	BHP	RPM	BHP	RPM	BHP	RPM	BHP	RPM	BHP					
4500	314	0.58	393	0.91	501	1.46	554	2.12	640	4.01	715	5.66	781	7.55	842	9.67	898	12.03	998	17.48	1096	22.61	1185	28.26									
5000	316	0.72	385	1.06	451	1.67	546	2.40	640	4.01	715	5.66	781	7.55	842	9.67	898	12.03	998	17.48	1096	22.61	1185	28.26									
5500	328	0.93	385	1.27	444	1.67	546	2.40	640	4.01	715	5.66	781	7.55	842	9.67	898	12.03	998	17.48	1096	22.61	1185	28.26									
6500	346	1.21	395	1.56	445	1.95	546	2.40	640	4.01	715	5.66	781	7.55	842	9.67	898	12.03	998	17.48	1096	22.61	1185	28.26									
7500	346	1.21	395	1.56	445	1.95	546	2.40	640	4.01	715	5.66	781	7.55	842	9.67	898	12.03	998	17.48	1096	22.61	1185	28.26									
8500	365	1.55	411	1.92	454	2.33	498	2.78	548	3.25	547	3.75	627	4.87	706	6.15	773	8.15	842	9.67	898	12.03	998	17.48									
9500	387	1.97	429	2.37	469	2.79	498	3.25	547	3.75	627	4.87	706	6.15	773	8.15	842	9.67	898	12.03	998	17.48											
10500	410	2.49	449	2.90	487	3.35	522	3.83	558	4.34	629	5.46	701	6.73	773	8.15	842	9.67	898	12.03	998	17.48											
11500	2020		471	3.53	506	4.00	540	4.50	572	5.03	637	6.17	702	7.44	768	8.85	834	10.39	933	12.88													
12500	2200		493	4.27	527	4.76	559	5.29	589	5.83	649	7.01	708	8.29	768	9.69	829	11.22	890	12.88													
13500	2370		518	5.13	548	5.64	579	6.19	608	6.76	717	9.27	774	10.68	830	12.21	886	13.85	998	17.48													
14500	2550				571	6.65	600	7.21	628	7.81	682	9.06	733	10.40	784	11.83	836	13.36	887	15.00	993	18.61											
15500	2720				595	7.79	622	8.38	649	8.99	701	10.29	750	11.67	798	13.13	845	14.68	893	16.32	991	19.91											
16500	2900						646	9.69	671	10.32	720	11.66	768	13.09	813	14.59	858	16.16	903	17.82	993	21.41											
17500	3080						670	11.15	694	11.81	741	13.19	787	14.66	830	16.20	873	17.81	915	19.50	1000	23.11											
18500	3250								717	13.45	763	14.88	807	16.39	849	17.98	890	19.63	930	21.35	1010	25.01											
19500	3430										785	16.75	827	18.30	868	19.93	908	21.63	947	23.39	1023	27.11											
20500	3600										808	18.80	849	20.39	888	22.06	927	23.81	964	25.61	1037	29.40											
21500	3780										832	21.04	871	22.68	909	24.63	946	26.18	983	28.02	1053	31.89											
22500	3950														931	26.92	967	28.75	1002	30.64	1070	34.60											
23500	4130														953	29.66	988	31.53	1022	33.46	1089	37.51											
24500	4310														975	32.62	1009	34.53	1043	36.51	1108	40.64											

(ALL CAPACITIES BASED ON STANDARD AIR (DENSITY .075# / CU. FT. - 70°F. - 29.29" HG. BAR.))

SIZE 1 3/4 — DF TYPE DFC DUPLEX FAN — DOUBLE FAN

OUTLET AREA = 11.38 SQ. FT. WHEEL BLADE DIA. = 22 3/4" TIP SPEED = RPM x 5.95 STD. BALANCE RPM: 1400 MAX. RPM WITH REINFORCEMENT: 1450

Volume of Air CFM	1/2" SP		3/4" SP		1" SP		1 1/4" SP		1 1/2" SP		2" SP		2 1/2" SP		3" SP		3 1/2" SP		4" SP		5" SP		6" SP		7" SP		8" SP						
	RPM	BHP	RPM	BHP	RPM	BHP	RPM	BHP	RPM	BHP	RPM	BHP	RPM	BHP	RPM	BHP	RPM	BHP	RPM	BHP	RPM	BHP	RPM	BHP	RPM	BHP	RPM	BHP					
9000	321	1.26	392	1.87	453	3.04	506	4.50	555	5.40	641	8.31	716	11.77	784	15.7	847	20.3	906	25.4													
11000	328	1.62	393	2.30	453	3.64	506	4.50	555	5.40	641	8.31	716	11.77	784	15.7	847	20.3	906	25.4													
13000	340	2.07	400	2.83	455	3.64	506	4.50	555	5.40	641	8.31	716	11.77	784	15.7	847	20.3	906	25.4													
15000	358	2.70	410	3.47	462	4.36	510	5.29	555	6.25	641	9.43	716	11.77	784	15.7	847	20.3	906	25.4													
17000	381	3.53	425	4.27	471	5.19	517	6.20	560	7.25	641	9.43	716	11.77	784	15.7	847	20.3	906	25.4													
19000	408	4.56	445	5.31	485	6.20	527	7.25	568	8.37	645	10.72	717	13.18	784	15.7	847	20.3	906	25.4													
21000	437	5.79	469	6.61	503	7.48	540	8.50	578	9.65	652	12.16	720	14.77	785	17.4	847	20.3	906	25.4													
23000	2020		496	8.15	526	9.05	558	10.04	592	11.17	661	13.76	727	16.55	789	19.4	848	22.3	906	25.4													
25000	2200		525	9.94	552	10.90	580	11.90	609	13.00	672	15.58	735	18.49	795	21.5	853	24.6	908	27.8													
27000	2370		554	11.99	579	13.04	605	14.08	631	15.18	687	17.69	746	20.65	804	23.8	859	27.1	912	30.5													
29000	2550				608	15.47	631	16.59	655	17.72	705	20.19	759	23.09	814	26.3	867	29.8	919	33.3													
31000	2720				637	18.20	659	19.41	681	20.60	726	23.09	775	25.93	826	29.1	877	32.7	927	36.4													
33000	2900						688	22.56	708	23.84	750	26.41	794	29.21	841	32.3	889	35.9	937	39.7													
35000	3080						717	26.06	737	27.43	776	30.13	816	32.94	858	36.0	903	39.5	949	43.3													
37000	3250								766	31.39	803	34.25	840	37.14	879	40.2	920	43.6	962	47.4													
39000	3430										831	38.78	866	41.79	901	44.9	939	48.2	978	51.9													
41000	3600										859	43.72	892	46.88	926	50.0	961	53.4	997	57.0													
43000	3780										888	49.09	920	52.43	952	55.7	984	59.1	1018	62.7													
45000	3950														979	61.9	1009	65.4	1041	69.0													
47000	4130														1006	68.5	1036	72.1	1065	75.8													
49000	4310														1035	75.7	1063	79.5	1091	83.2													

(ALL CAPACITIES BASED ON STANDARD AIR (DENSITY .075# / CU. FT. - 70°F. - 29.29" HG. BAR.))

SIZE 2 — DF TYPE DFC UNITARY FAN — SINGLE FAN

WHEEL BLADE DIA. = 26" TIP SPEED = RPM x 6.81 STD. BALANCE RPM: 1000 MAX. RPM WITH REINFORCEMENT: 1189

OUTLET AREA = 7.39 SQ. FT.

Volume of Air CFM	1/2" SP		3/4" SP		1" SP		1 1/4" SP		1 1/2" SP		2" SP		2 1/2" SP		3" SP		3 1/2" SP		4" SP		5" SP		6" SP		7" SP		8" SP			
	RPM	BHP	RPM	BHP	RPM	BHP	RPM	BHP	RPM	BHP	RPM	BHP	RPM	BHP	RPM	BHP	RPM	BHP	RPM	BHP	RPM	BHP	RPM	BHP	RPM	BHP	RPM	BHP		
6000	267	0.73	336	1.16																										
7000	270	0.87	328	1.28																										
8000	278	1.08	327	1.47																										
9000	290	1.33	333	1.73																										
10000	304	1.63	343	2.05																										
11000	318	1.98	355	2.43																										
12000	334	2.39	369	2.88																										
13000	350	2.86	383	3.38																										
14000	367	3.39	398	3.95																										
15000	2030		414	4.59																										
16000	2170		430	5.31																										
17000	2300		446	6.11																										
18000	2440																													
19000	2570																													
20000	2710																													
22000	2980																													
24000	3250																													
26000	3520																													
28000	3790																													
30000	4060																													
32000	4330																													

(ALL CAPACITIES BASED ON STANDARD AIR (DENSITY .075#/CU. FT. - 70°F. - 29.29" HG. BAR.))

SIZE 2 — DF TYPE DFC DUPLEX FAN — DOUBLE FAN

WHEEL BLADE DIA. = 26" TIP SPEED = RPM x 6.81 STD. BALANCE RPM: 1000 MAX. RPM WITH REINFORCEMENT: 1189

OUTLET AREA = 14.78 SQ. FT.

Volume of Air CFM	1/2" SP		3/4" SP		1" SP		1 1/4" SP		1 1/2" SP		2" SP		2 1/2" SP		3" SP		3 1/2" SP		4" SP		5" SP		6" SP		7" SP		8" SP			
	RPM	BHP	RPM	BHP	RPM	BHP	RPM	BHP	RPM	BHP	RPM	BHP	RPM	BHP	RPM	BHP	RPM	BHP	RPM	BHP	RPM	BHP	RPM	BHP	RPM	BHP	RPM	BHP		
12000	279	1.64	346	2.58																										
14000	281	1.94	342	2.88																										
16000	289	2.37	342	3.28																										
18000	300	2.92	347	3.82																										
20000	315	3.60	355	4.50																										
22000	332	4.41	368	5.34																										
24000	350	5.37	382	6.33																										
26000	369	6.50	398	7.50																										
28000	389	7.79	416	8.83																										
30000	2030		434	10.35																										
32000	2170		453	12.07																										
34000	2300		473	14.00																										
36000	2440																													
38000	2570																													
40000	2710																													
44000	2980																													
48000	3250																													
52000	3520																													
56000	3790																													
60000	4060																													
64000	4330																													

(ALL CAPACITIES BASED ON STANDARD AIR (DENSITY .075#/CU. FT. - 70°F. - 29.29" HG. BAR.))

SIZE 2 1/4 — DF TYPE DFC UNITARY FAN — SINGLE FAN

OUTLET AREA = 9.35 SQ. FT. WHEEL BLADE DIA. = 29 1/4" TIP SPEED = RPM x 7.66 STD. BALANCE RPM: 900 MAX. RPM WITH REINFORCEMENT: 1057

Volume of Air CFM	1/2" SP		3/4" SP		1" SP		1 1/4" SP		1 1/2" SP		2" SP		2 1/2" SP		3" SP		3 1/2" SP		4" SP		5" SP		6" SP		7" SP		8" SP						
	RPM	BHP	RPM	BHP	RPM	BHP	RPM	BHP	RPM	BHP	RPM	BHP	RPM	BHP	RPM	BHP	RPM	BHP	RPM	BHP	RPM	BHP	RPM	BHP	RPM	BHP	RPM	BHP					
8000	237	0.97	296	1.51																													
9000	240	1.13	291	1.64	343	2.29																											
10000	247	1.34	291	1.83	337	2.44	385	3.18																									
11000	255	1.58	294	2.07	335	2.66	378	3.37	421	4.19																							
12000	264	1.86	300	2.37	337	2.95	375	3.63	414	4.42																							
13000	273	2.18	308	2.72	341	3.31	376	3.97	411	4.72																							
14000	284	2.54	316	3.11	348	3.72	379	4.37	411	5.11	478	6.86	545	8.96																			
15000	295	2.94	326	3.55	355	4.18	384	4.85	414	5.57	475	7.26	538	9.31																			
16000	306	3.40	336	4.04	364	4.70	391	5.39	418	6.12	474	7.77	533	9.74	592	12.04																	
18000	329	4.45	357	5.17	383	5.90	408	6.65	432	7.41	481	9.06	530	10.94	582	13.10	635	15.56															
20000	2140		379	6.53	404	7.34	427	8.15	449	8.97	493	10.69	537	12.55	581	14.62	627	16.94	675	19.54													
22000	2350		403	8.14	425	9.02	447	9.91	469	10.80	509	12.63	549	14.54	588	16.60	629	18.84	670	21.631													
24000	2570		448	10.98	448	10.98	469	11.94	489	12.91	527	14.87	564	16.88	600	18.99	637	21.22	674	23.62	750	29.04											
26000	2780		492	14.28	511	15.32	547	17.43	582	19.57	616	21.76	649	24.04	663	26.44	751	31.72	822	37.77	894	44.65											
28000	2990		515	16.94	533	18.06	568	20.31	601	22.59	633	24.91	664	27.28	695	29.73	758	34.99	822	40.86	888	47.46											
30000	3210				556	21.15	589	23.55	621	25.98	652	28.43	681	30.92	711	33.46	769	38.79	827	44.60	887	51.01											
32000	3420						612	27.16	642	29.74	671	32.34	700	34.96	728	37.62	782	43.11	837	48.94	892	55.26											
34000	3640						635	31.18	664	33.90	692	36.65	720	39.41	746	42.20	798	47.90	850	53.86	901	60.18											
36000	3850						658	35.63	686	38.49	714	41.39	740	44.30	766	47.23	816	53.18	864	59.31	913	65.71											
38000	4060										736	46.58	761	49.64	786	52.72	834	58.94	881	65.29	927	71.84											
40000	4280										758	52.25	783	55.46	807	58.69	854	65.20	899	71.80	943	78.55											

(ALL CAPACITIES BASED ON STANDARD AIR (DENSITY .075# / CU. FT. - 70°F. - 29.29" HG. BAR.))

SIZE 2 1/4 — DF TYPE DFC DUPLEX FAN — DOUBLE FAN

OUTLET AREA = 18.70 SQ. FT. WHEEL BLADE DIA. = 29 1/4" TIP SPEED = RPM x 7.66 STD. BALANCE RPM: 900 MAX. RPM WITH REINFORCEMENT: 1057

Volume of Air CFM	1/2" SP		3/4" SP		1" SP		1 1/4" SP		1 1/2" SP		2" SP		2 1/2" SP		3" SP		3 1/2" SP		4" SP		5" SP		6" SP		7" SP		8" SP							
	RPM	BHP	RPM	BHP	RPM	BHP	RPM	BHP	RPM	BHP	RPM	BHP	RPM	BHP	RPM	BHP	RPM	BHP	RPM	BHP	RPM	BHP	RPM	BHP	RPM	BHP	RPM	BHP						
16000	248	2.1	306	3.3																														
18000	250	2.5	304	3.6	354	5.1																												
20000	256	2.9	304	4.1	352	5.5	396	7.1																										
22000	263	3.4	307	4.6	351	5.9	394	7.6	434	9.3																								
24000	273	4.0	312	5.2	352	6.5	392	8.1	431	9.9																								
26000	284	4.8	319	5.9	355	7.3	393	8.8	430	10.6																								
28000	296	5.6	327	6.8	361	8.1	395	9.7	430	11.4	496	15.4	561	19.9																				
30000	309	6.6	338	7.8	368	9.1	399	10.7	432	12.4	496	16.3	558	20.9																				
32000	322	7.6	349	8.9	377	10.3	405	11.8	435	13.5	496	17.4	556	21.9	612	27.0																		
36000	350	10.2	373	11.5	397	13.0	422	14.5	448	16.2	501	20.1	555	24.5	608	29.5	660	35.0																
40000	2140		400	14.8	421	16.3	443	17.9	465	19.6	511	23.5	559	27.8	608	32.7	656	38.2	703	44.0														
44000	2350		428	18.7	447	20.3	466	22.0	486	23.8	527	27.6	569	32.0	613	36.8	657	42.1	701	47.9	787	60.8												
48000	2570		474	25.0	474	25.0	492	26.8	509	28.7	546	32.6	584	37.0	623	41.8	663	47.0	704	52.7	784	65.4												
52000	2780						518	32.4	535	34.4	568	38.5	602	42.9	637	47.7	673	52.9	710	58.5	785	71.0												
56000	2990						546	38.9	561	40.9	592	45.2	623	49.7	655	54.6	688	59.8	721	65.4	790	77.7												
60000	3210						589	48.4	589	48.4	617	52.8	646	57.5	675	62.5	705	67.8	736	73.3	799	85.6												
64000	3420										644	61.5	670	66.3	697	71.4	725	76.8	753	82.4	811	94.7												
68000	3640										671	71.1	696	76.2	721	81.5	747	87.0	773	92.7	826	105.0												
72000	3850										699	81.9	723	87.2	746	92.6	770	98.3	794	104.1	844	116.6												
76000	4060											742	105.0	795	110.8	818	116.8	864	129.5	912	143.1													
80000	4280										799	118.6	820	124.6	842	130.8	885	143.7	930	157.5	976	172.2												

(ALL CAPACITIES BASED ON STANDARD AIR (DENSITY .075# / CU. FT. - 70°F. - 29.29" HG. BAR.))

SIZE 2 1/2 — DF TYPE DFC UNITARY FAN — SINGLE FAN

WHEEL BLADE DIA. = 33 1/2" TIP SPEED = RPM x 8.50 STD. BALANCE RPM: 800 MAX. RPM WITH REINFORCEMENT: 953

WHEEL BLADE DIA. = 33 1/2" TIP SPEED = RPM x 8.50 STD. BALANCE RPM: 800 MAX. RPM WITH REINFORCEMENT: 953

WHEEL BLADE DIA. = 33 1/2" TIP SPEED = RPM x 8.50 STD. BALANCE RPM: 800 MAX. RPM WITH REINFORCEMENT: 953

WHEEL BLADE DIA. = 33 1/2" TIP SPEED = RPM x 8.50 STD. BALANCE RPM: 800 MAX. RPM WITH REINFORCEMENT: 953

WHEEL BLADE DIA. = 33 1/2" TIP SPEED = RPM x 8.50 STD. BALANCE RPM: 800 MAX. RPM WITH REINFORCEMENT: 953

Volume of Air CFM	1/2" SP		3/4" SP		1" SP		1 1/4" SP		1 1/2" SP		2" SP		2 1/2" SP		3" SP		3 1/2" SP		4" SP		5" SP		6" SP		7" SP		8" SP		
	RPM	BHP	RPM	BHP	RPM	BHP	RPM	BHP	RPM	BHP	RPM	BHP	RPM	BHP	RPM	BHP	RPM	BHP	RPM	BHP	RPM	BHP	RPM	BHP	RPM	BHP	RPM	BHP	
10000	214	1.22	266	1.87																									
11000	216	1.38	262	2.00	310	2.81																							
12000	220	1.57	261	2.18	305	2.95	348	3.88																					
13000	226	1.80	263	2.41	302	3.15	343	4.04	382	5.07																			
14000	232	2.06	266	2.68	302	3.40	339	4.26	376	5.26																			
15000	239	2.35	271	2.99	304	3.71	337	4.54	372	5.51																			
16000	246	2.67	277	3.34	307	4.01	338	4.88	370	5.81	436	8.01																	
18000	261	3.42	290	4.15	317	4.91	344	5.73	371	6.63	428	8.74	486	11.30															
20000	277	4.31	304	5.12	329	5.94	353	6.79	378	7.71	427	9.73	479	12.15	531	14.98													
22000	294	5.37	319	6.25	343	7.14	366	8.06	388	9.00	432	11.0	477	13.35	524	16.03	19.09												
24000	2080		336	7.56	358	8.53	379	9.51	400	10.51	440	12.60	481	14.81	523	17.46	566	20.38	610	23.63									
26000	2260		352	9.08	374	10.12	394	11.17	413	12.23	451	14.42	488	16.74	526	19.28	565	22.08	604	25.19	685	32.36							
28000	2430				390	11.92	409	13.04	428	14.18	464	16.49	498	18.81	533	21.44	568	24.19	604	27.20	678	34.09	44.05						
30000	2600				407	13.95	425	15.15	443	16.31	477	18.81	510	21.31	542	23.92	575	26.69	607	29.65	675	36.30	744						
32000	2780				442		442	17.50	459	18.71	492	21.38	523	24.01	553	26.72	584	29.53	614	32.50	676	39.02	740	46.50	805				
34000	2950				459		459	20.12	475	21.46	507	24.22	537	26.91	566	29.82	595	32.71	623	35.72	680	42.21	739	49.49	800	57.72	862	66.92	
36000	3120				492		492	24.45	551	30.21	579	33.21	607	36.22	634	39.31	687	45.84	742	53.02	798	61.02	856	69.93					
36000	3300				509		509	27.72	509	27.72	538	30.76	566	33.82	593	36.92	620	40.05	645	43.25	696	49.90	748	57.07	800	64.92	853	73.58	
40000	3470										555	34.49	582	37.70	608	40.95	633	44.22	658	47.53	707	54.35	755	61.58	804	69.37	854	77.85	
42000	3650										571	38.55	598	41.91	623	45.30	648	48.72	672	52.16	719	59.20	765	66.55	811	74.31	858	82.74	
44000	3820										589	42.96	614	46.46	639	50.00	663	53.57	686	57.16	731	64.44	775	71.96	819	79.84	864	88.20	

(ALL CAPACITIES BASED ON STANDARD AIR (DENSITY .075# / CU. FT. - 70°F. - 29.29" HG. BAR.))

SIZE 2 1/2 — DF TYPE DFC DUPLEX FAN — DOUBLE FAN

WHEEL BLADE DIA. = 33 1/2" TIP SPEED = RPM x 8.50 STD. BALANCE RPM: 800 MAX. RPM WITH REINFORCEMENT: 953

WHEEL BLADE DIA. = 33 1/2" TIP SPEED = RPM x 8.50 STD. BALANCE RPM: 800 MAX. RPM WITH REINFORCEMENT: 953

WHEEL BLADE DIA. = 33 1/2" TIP SPEED = RPM x 8.50 STD. BALANCE RPM: 800 MAX. RPM WITH REINFORCEMENT: 953

WHEEL BLADE DIA. = 33 1/2" TIP SPEED = RPM x 8.50 STD. BALANCE RPM: 800 MAX. RPM WITH REINFORCEMENT: 953

WHEEL BLADE DIA. = 33 1/2" TIP SPEED = RPM x 8.50 STD. BALANCE RPM: 800 MAX. RPM WITH REINFORCEMENT: 953

Volume of Air CFM	1/2" SP		3/4" SP		1" SP		1 1/4" SP		1 1/2" SP		2" SP		2 1/2" SP		3" SP		3 1/2" SP		4" SP		5" SP		6" SP		7" SP		8" SP		
	RPM	BHP	RPM	BHP	RPM	BHP	RPM	BHP	RPM	BHP	RPM	BHP	RPM	BHP	RPM	BHP	RPM	BHP	RPM	BHP	RPM	BHP	RPM	BHP	RPM	BHP	RPM	BHP	
20000	223	2.7	275	4.2	319	6.2																							
22000	954	3.0	274	4.5	317	6.6	357	8.6																					
24000	1040	3.4	273	4.9	316	7.1	355	9.0	392	11.2																			
26000	1130	3.9	275	5.3	316	7.6	354	9.6	390	11.8																			
28000	1220	4.5	277	5.9	316	8.1	353	10.2	386	12.4																			
30000	1300	5.1	281	6.5	317	8.7	353	10.8	386	13.0																			
32000	1390	5.9	286	7.3	319	9.4	353	11.4	387	13.6	18.0																		
36000	1560	7.3	300	9.1	328	10.7	358	12.6	388	14.8	19.7	503	25.3																
40000	1740	9.7	316	11.3	341	13.0	366	14.9	393	17.0	447	21.8	500	27.4	551	33.6													
44000	1910	12.3	334	13.9	356	15.7	376	17.6	402	19.7	450	24.4	499	29.9	548	36.1	594	42.9											
48000	2060		353	17.1	373	18.9	393	20.9	414	23.0	457	27.7	502	33.1	547	39.2	591	45.9	634	53.2									
52000	2260		373	20.7	391	22.7	409	24.7	428	26.9	467	31.6	508	36.9	549	42.9	591	49.6	632	56.8	710	72.7							
56000	2430				410	27.0	427	29.1	444	31.3	460	36.1	516	41.5	554	47.4	593	53.9	632	61.0	707	76.9							
60000	2600				430	31.9	446	34.1	462	36.4	494	41.3	528	46.7	562	52.6	598	59.0	634	66.1	706	81.7							
64000	2780						466	39.7	480	42.1	510	47.2	541	52.7	573	58.6	606	65.0	639	71.9	707	67.4	774	104.8	838	123.9			
66000	2950						486	46.0	500	48.5	528	53.8	556	59.4	586	65.3	616	71.8	647	78.6	710	93.9	773	111.2	836	130.2	897	150.7	
72000	3120								519	55.7	546	61.1	572	66.8	600	72.9	628	79.4	656	86.3	715	101.4	775	118.4	835	137.3	894	157.8	
76000	3300								540	63.6	565	69.2	590	75.1	615	81.3	641	87.9	668	94.8	723	109.9	779	126.7	836	145.4	893	165.7	
80000	3470										584	78.2	618	84.2	632	90.6	656	97.2	681	104.2	732	119.3	785	136.1	839	154.5	893	174.6	
84000	3650										604	88.0	627	94.2	649	100.7	672	107.5	696	114.6	744	129.8	793	146.5	844	164.7	896	184.6	
86000	3820										625	98.7	646	105.1	667	111.8	689	118.7	711	125.9	757	141.3	803	158.0	851	176.1	900	195.8	

(ALL CAPACITIES BASED ON STANDARD AIR (DENSITY .075# / CU. FT. - 70°F. - 29.29" HG. BAR.))



INSTALLATION SUGGESTIONS

FOUNDATIONS:

Unit foundations and bearing supports must be designed for live load with horizontal as well as vertical stiffness. Bearing supports must be flat and level for proper bearing operation and rated life.

DF - DFB - DFC FAN ASSEMBLY:

1. Install fan housings. Housings are frequently supported from outlets and/or sides with additional support at rear of housings on larger sizes.

2. Insert wheels in housings. Wheels are inserted through outlets after removal of cut-off plates. These centrifugal forward curved wheels must be inserted so that cup of blade faces the outlet.

3. Insert shaft in position. Slide the shaft through the shaft hole in unit casing and through the wheel hubs. Slide keys into wheel hubs before this operation is completed. Loosely mount cooling wheels, if used, on shaft between the casing and the bearings so that the cooling wheel blades face away from casing toward end of shaft.

4. Mount bearings (see bearing installation). Slide the drive side bearing ("Held", "Fixed" or "Retained" bearing) onto shaft and loosely bolt in position. Also slide the opposite side bearing ("Free" or "Floating" bearing) onto shaft and loosely bolt into position. Position the shaft in bearings so that 1/4" of shaft extends out of the opposite side bearing. Align the bearing housings with the shaft so that the shaft is centered in seals of bearings and the seals of bearings rotate freely. Tighten the bearing housing hold-down bolts. Lock inner race of drive side bearing to shaft.

5. Complete fan wheel installation. Position wheels in center of their housings for low or normal temperature units. For high temperature units, position wheels toward drive side of housing, allowing only running clearance. Always tighten the wheel hub set screw over the keyway first and then the other set screw second. Replace cutoff plates previously removed.

6. Complete bearing installation. Position balls and races of opposite side (floating) bearing in the center of float space for normal temperature units. For high temperature units position balls and races toward unit side of float space leaving very small end clearance in order to allow nearly full float for shaft expansion. Lock inner race of floating bearing to shaft. Fill grease lubricated bearing housings 1/3 full of lubricant shown below and replace end bell or top half of bearing. Check alignment of both bearings with shaft, repositioning bearing as required. If cooling wheels are used, position cooling wheels as shown in illustration on page 5, bolt wheel halves securely together and complete cooling assemblies. Rotate shaft to make sure fans run free and clear. Install and align the drive.

7. Initial operation. Apply power momentarily. Check for proper direction of fan rotation. Check drive for smooth operation. After 50 hours of operation, re-tighten wheel hub set screws and bearing hold down bolts.

BEARING INSTALLATION:

The following are general bearing installation suggestions. Always consult the bearing manufacturer for specific bearing installation instructions.

Standard Cast Iron Pillowblock Bearings. To install the unit on the shaft, make certain that shafting is free of burrs. Setscrews should be clear of bore. Slide the bearing into position on the shaft. Never hammer the end of the inner race since they are relatively soft. If necessary to apply force, use a brass or copper pipe or bar against the inner race to drift the bearing into place. Bolt bearing housing to support. Rotate shaft to make certain it turns freely. Then tighten the setscrews securely onto the shaft. Consult the bearing manufacturer for setscrew torque tightening values.

Taper Roller Bearings. Expansion and Non-Expansion Bearings. One non-expansion bearing must be installed on every shaft to stabilize the shaft. Slide the bearing unit and locking collar on the shaft. DO NOT hammer the ends of the bearing. If the fit is snug, use a piece of emery cloth to smooth rough spots on shaft. Mount the housing securely to the bearing supports. Secure the first bearing to the shaft by first tightening all setscrews to one half of the tightening torque recommended by the manufacturer. Then, alternately tighten the setscrews to the torque value recommended by the manufacturer. Check for freedom of rotation. Repeat procedure for remaining bearings on shaft.

Caution: Dirt is a major cause of premature bearing failure. Extreme care should be taken during installation and lubrication to prevent entrance of dirt.

LUBRICATION:

Use a clean lithium base grease conforming to a NLGI grade #2 consistency. Add lubricant semi-annually for dirty atmospheres or high temperature installations and annually for clean normal conditions. This type of lubricant is satisfactory for an operating temperature range of -30° F to +250° F.

DRIVES:

Improperly installed V-belt drives cause vibration and excessive drive wear. Installation practices should be observed as follows:

1. Fan and motor shafts must be parallel.
2. Fan and motor sheaves must be aligned axially.
3. Belts must have proper tension, neither too tight or too loose.
4. Fan sheaves for belt speeds over 5000 ft./ min. should be specially balanced.
5. When installing bushed sheaves, locking bolts must be tightened uniformly to avoid sheave eccentricity.
6. Always tighten setscrew over keyway first.

AFTER RUN:

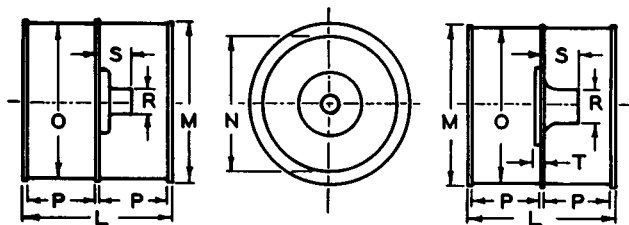
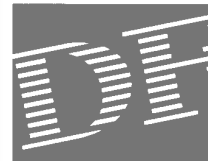
On high temperature installations (over 300° F.) fans should be operated after heater shut-off until cool to prevent shaft bending because of creep during high temperature soaking.

DIRECT FIRED HEATERS:

Provision must be made for adequate mixing of heater output with the circulated air to furnish uniform fan inlet temperature. Stratification and local spots cause uneven fan wheel expansion and subsequent distortion.

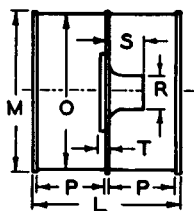
High temperature limit controls should be located in fan inlet air stream.

DF - DFB - DFC FAN DIMENSIONS

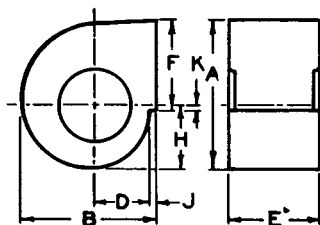


SIZES 1/2 THRU 1 3/4

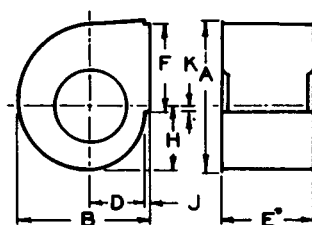
ALL WHEELS
CLOCKWISE ROTATION
FACING HUB.



SIZE 2



SIZES 1/2 THRU 1 3/4



SIZE 2

DF WHEELS

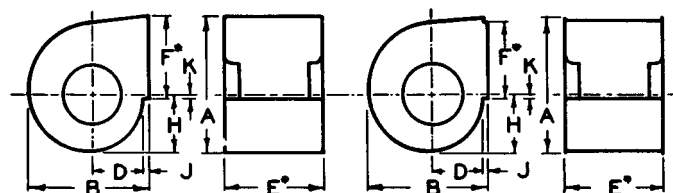
FAN SIZE	L	M	N	O	P	WHEEL WEIGHTS LESS HUB Lbs.
1/2	6 15/64	6 3/4	5 5/8	6 1/2	3	3
5/8	7 7/64	8 1/4	7 1/16	8 1/8	3 3/4	5.5
9"	9 15/16	9 1/4	7 3/4	9	4 1/2	8
3/4	9 15/16	10	8 1/2	9 3/4	4 1/2	8.5
7/8	12 19/64	11 5/8	9 5/8	11 3/8	6	14
1	12 15/64	13 1/4	11 1/4	13	6	15
1 1/8	15 15/64	15	12 1/2	14 5/8	7 1/2	21
1 1/4	15 15/64	16 5/8	14 1/4	16 1/4	7 1/2	22
1 3/8	16 29/32	18 1/8	15 1/2	17 7/8	8 1/4	28.5
1 1/2	18 3/32	19 7/8	17 1/8	19 1/2	9	38
1 3/4	21 9/32	23 3/8	20	22 3/4	10 1/2	51
2	24 7/16	26 1/2	22 7/8	26	12	83
2 1/4	27 13/32	30	25 3/4	29 1/4	13 1/2	115
2 1/2	30 11/32	33 1/4	28 5/8	32 1/4	15	170.5

DFB HOUSINGS

FAN SIZE	A	B	D	E*	F*	H	J	K	WEIGHT Lbs.
1/2	1 19/16	1 11/4	4 7/16	7 1/2	7 1/8	4 7/8	1 1/4	7/16	6.25
5/8	1 14 1/16	1 13 1/2	5 7/16	9	8 5/8	6	1 1/4	9/16	9.25
3/4	1 16 7/8	1 15 5/8	5 7/8	10 5/8	12 3/8	7 3/16	1 9/16	2 11/16	13.5
7/8	1 19 5/8	1 18	6 3/4	13 3/4	14 7/16	8 3/8	1 11/16	3 3/16	18
1	2 22 1/2	2 20 1/2	7 13/16	13 3/4	16 7/16	9 5/8	1 11/16	3 9/16	21
1 1/8	2 25 5/16	2 22 13/16	8 11/16	17 1/2	18 5/8	10 13/16	1 13/16	4 1/8	30
1 1/4	2 28	2 25 1/4	9 11/16	17 1/2	20 1/2	12	1 13/16	4 1/2	32.75
1 3/8	3 30 9/16	2 26 11/16	9 7/8	19 1/2	22 5/8	12 3/4	1 7/8	5 1/16	37
1 1/2	3 33	2 28 15/16	10 13/16	21	24 5/8	13 7/8	1 7/8	5 1/2	46
1 3/4	3 38 3/8	3 33 1/2	12 7/16	24 1/4	28 3/4	16 1/16	2 29/16	6 7/16	63
2	4 45 15/16	4 40 7/8	16 1/4	27 5/8	32 3/4	19 13/16	2	7 5/16	105

* OUTLET DIMENSIONS — OUTSIDE

Double Housings



SIZES 3/4 THRU 1 3/4

SIZES 2 THRU 2 1/2

STANDARD HUBS— TYPE DF WHEELS

DF WHEEL SIZE	HUB SIZE	BORE RANGE		R	S	T	WEIGHT Lbs.
		MIN	MAX				
1/2, 5/8"	M-1283	1/4	5/8	1 7/8	1 1/4	—	1
	M-1375	1 1/16	1	1 7/8	1 1/4	—	1
	M-975	1 11/16	1 7/16	2 3/8	1 1/4	—	2.25
	M-1014	1 1/2	2	3 3/4	2	—	4.5
3/4, 7/8, 1", 9"	M-799	5/8	1 3/16	2 1/4	2	—	3
	M-1014	1 1/4	2 7/16	3 3/4	2	—	4.5
1 1/8, 1 1/4", 1 3/8	M-739	3/4	1 5/8	2 3/4	3 1/8	—	6.75
	M-1802	1 11/16	2 11/16	4 1/8	3 1/8	—	11.5
	M-1421	2 3/4	3 7/16	5 1/8	3	—	13.5
	M-1812-S	3 1/2	5 1/8	5 3/4	3	—	16
1 1/2, 1 3/4", 2	UH-11-1	1	1 9/16	2 3/4	3 3/16	—	10.5
	UH-11-3	1 5/8	2 9/16	4	3 3/16	—	12.25
	UH-11-4	2 5/8	3 13/16	5 1/4	3 3/16	—	16.25
	M-1812	3 7/8	5 1/8	7	2 1/2	—	30
2 1/4, 2 1/2"	M-1816	1 11/16	2 11/16	4 1/2	3 3/4	1 3/16	35
	M-1817	2 3/4	3 11/16	5 3/4	3 3/4	1 3/16	46
	M-1929	3 3/4	6	7 3/4	3 1/2	3/8	57

DFC HOUSINGS

FAN SIZE	A	B	D	E*	F*	H	J	K	WEIGHT Lbs.
3/4	1 16 7/8	1 15 5/8	5 7/8	12 1/2	12 3/8	7 3/16	1 9/16	2 11/16	14
7/8	1 19 5/8	1 18	6 3/4	16 9/16	14 7/16	8 3/8	1 11/16	3 3/16	20
1	2 22 1/2	2 20 1/2	7 13/16	16 9/16	16 7/16	9 5/8	1 11/16	3 9/16	23
1 1/8	2 25 5/16	2 22 13/16	8 11/16	20 5/8	18 5/8	10 13/16	1 13/16	4 1/8	32
1 1/4	2 28	2 25 1/4	9 11/16	20 5/8	20 1/2	12	1 13/16	4 1/2	34
1 3/8	3 30 9/16	2 26 11/16	9 7/8	22 3/4	22 5/8	12 3/4	1 7/8	5 1/16	42
1 1/2	3 33	2 28 15/16	10 13/16	24 3/4	24 5/8	13 7/8	1 7/8	5 1/2	52
1 3/4	3 38 3/8	3 33 1/2	12 7/16	28 7/8	28 3/4	16 1/16	2 29/16	6 7/16	76
2	4 45 15/16	4 40 7/8	16 1/4	32 3/4	32 7/8	19 13/16	2	7 5/16	131
2 1/4	5 51 5/8	4 45 3/4	18 3/8	36 13/16	36 15/16	22 5/16	2	8 3/16	165
2 1/2	5 57 3/8	5 50 7/8	20 3/8	40 7/8	41	24 11/16	2	9 1/16	226

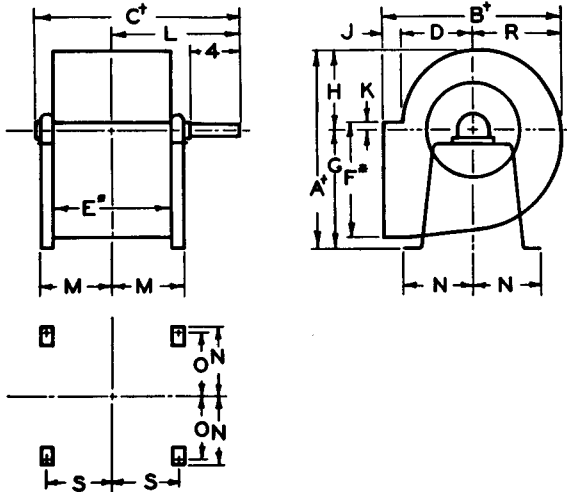
* OUTLET DIMENSIONS — OUTSIDE



UNITARY FAN DIMENSIONS

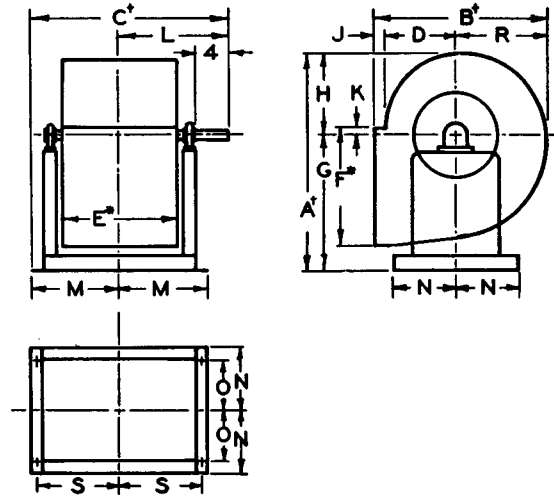
Unitary Fans are available in either clockwise (shown) or counter-clockwise rotation.
Bottom Horizontal discharge shown. Other discharges available.

TYPE DF
SIZES 1/2 & 5/8



TYPE DFB — SIZES 3/4 THRU 2

TYPE DFC — SIZES 1 3/4 THRU 2 1/2



TYPE DFB UNITARY FAN

FAN SIZE	BHD		UBD		THD		C'	D	E*	F*	G	H	J	K	L	M	N	O	R	S	KEYWAY IN DRIVE HUB		SHAFT EXT. DIA.	WEIGHT LBS
	A'	B'	A'	B'	A'	B'															WIDTH	DEPTH		
1/2	12 3/8	11 1/4	13 3/16	11 9/16	14 3/8	11 1/4	14 1/4	4 7/8	7 1/2	7 7/8	7 1/2	4 7/8	1 1/4	7/16	9	4 3/4	5 1/4	4 3/8	5 9/16	4 1/4			1	24
5/8	15	13 1/2	15 1/16	14 1/8	17 1/8	13 1/2	15 3/4	5 7/8	9	8 5/8	9	6	1 1/4	9/16	11	5 1/2	5 1/4	4 3/4	6 1/16	5			1	27
3/4	18 7/16	15 5/8	18 1/16	16 7/8	20 1/8	15 5/8	19 3/8	5 7/8	10 9/8	12 3/8	11 1/4	7 3/8	1 9/16	2 1/16	11	8 3/8	5 1/2	4 7/8	8 3/8	7 3/4	3/4	1/8	1	51
7/8	22 7/8	18	22 15/16	19 3/8	25 3/4	18	23	6 3/4	13 3/4	14 7/8	14 1/2	8 3/8	1 11/16	3 3/8	12 3/4	10 3/4	6 1/4	4 3/4	9 9/16	9 3/8	1/4	1/8	1	70
1	24 1/2	20 1/2	24	22 1/2	27 3/8	20 1/2	23	7 1/8	13 3/4	16 7/8	14 1/2	9 3/8	1 1/16	3 9/16	12 3/4	10 3/4	7 1/4	5 3/4	11	9 3/8	1/4	1/8	1	75
1 1/8	28 5/8	22 9/16	28	25 5/8	32	22 9/16	26 3/4	8 1/4	17 1/2	18 5/8	17 1/2	10 9/16	1 1/8	4 1/8	14 5/8	12 3/8	8 1/4	6 3/4	12 5/8	11 1/2	1/4	1/8	1	95
1 1/4	29 1/2	25 1/4	29	28	33 1/2	25 1/4	26 3/4	9 1/4	17 1/2	20 1/2	17 1/2	12	1 1/8	4 1/2	14 5/8	12 3/8	9 1/2	8	13 3/4	11 1/2	1/4	1/8	1	102
1 3/8	32 1/4	26 1/16	31 1/4	30 3/8	37 1/8	26 1/16	29	9 7/8	19 1/2	22 3/8	19 1/2	12 3/4	1 7/8	5 1/8	15 3/4	13 1/4	10 3/4	8 3/4	14 15/16	12 3/8	1/4	1/8	1	115
1 1/2	34 7/8	28 1/8	33 1/16	33	40 1/8	28 1/8	29 9/16	10 1/8	21	24 5/8	21	13 3/8	1 7/8	5 1/2	16 1/4	13 3/8	11	9 1/2	16 1/4	12 9/16	1/4	1/8	1	148
1 3/4	40 1/16	33 1/2	38 3/8	38 3/8	46 3/8	33 1/2	33 3/8	12 1/8	24 1/4	28 3/4	24	16 1/16	2 3/8	6 7/8	18 3/4	15 1/4	11 1/8	9 3/8	18 7/8	14 5/8	1/4	1/8	1 1/8	190
2	48 5/8	40 7/8	46 3/4	45 1/4	53 3/8	40 7/8	38 1/2	16 1/4	27 3/8	32 3/4	28 1/2	19 3/16	2	7 5/8	20 1/2	18	12 3/4	10 3/4	22 3/8	17 1/8	3/8	3/16	1 3/8	315

OVERALL DIMENSIONS — ↑
OUTLET DIMENSIONS—OUTSIDE — *

TYPE DFC UNITARY FAN

FAN SIZE	BHD		UBD		THD		C'	D	E*	F*	G	H	J	K	L	M	N	O	R	S	KEYWAY IN DRIVE HUB		SHAFT EXT. DIA.	WEIGHT LBS
	A'	B'	A'	B'	A'	B'															WIDTH	DEPTH		
3/4	18 7/16	15 5/8	18 1/16	16 7/8	20 1/16	15 5/8	21 15/16	5 13/16	12 1/2	12 3/8	11 1/4	7 3/16	1 5/8	2 1/16	11 7/8	10 1/16	5 1/2	4 7/8	8 3/16	9 7/16	1/4	1/8	1	53
7/8	22 7/8	18	22 15/16	19 3/8	25 3/4	18	25 3/8	6 23/32	16 3/8	14 7/8	14 1/2	8 3/8	1 23/32	3 3/8	14 3/8	11 1/16	6 1/4	4 3/4	9 9/16	11 1/16	1/4	1/8	1	74
1	24 1/2	20 1/2	24	22 1/2	27 3/8	20 1/2	25 3/8	7 23/32	16 3/8	16 7/8	14 1/2	9 3/8	1 23/32	3 3/8	14 3/8	11 1/16	7 1/4	5 3/4	11	11 1/16	1/4	1/8	1	81
1 1/8	27 1/16	22 3/16	28	24 1/16	32	22 3/16	29 15/16	8 3/8	20 3/8	18 3/8	17 1/2	10 3/16	1 7/8	4 1/8	16 1/4	13 1/16	8 1/4	6 3/4	12 9/16	13 3/16	1/4	1/8	1	103
1 1/4	29 1/2	25 1/4	29	28	33 1/2	25 1/4	29 15/16	9 3/8	20 3/8	20 1/2	17 1/2	12	1 9/16	4 1/2	16 1/4	13 1/16	9 1/2	8	13 3/4	13 3/16	1/4	1/8	1	112
1 3/8	32 1/4	26 1/16	31 1/4	30 3/8	37 1/8	26 1/16	32 1/4	9 13/16	22 3/4	22 3/8	19 1/2	12 3/4	1 9/16	5 1/8	17 3/4	14 1/2	9 7/8	8 3/8	14 15/16	13 3/8	1/4	1/8	1 3/8	127
1 1/2	34 7/8	28 1/8	33 1/16	33	40 1/8	28 1/8	34 3/8	10 3/4	24 3/4	24 3/8	21	13 7/8	1 11/16	5 1/2	18 3/4	15 7/16	11	9 1/2	16 1/4	14 13/16	1/4	1/8	1 3/8	162
1 3/4	40 1/16	33 1/2	38 3/8	38 3/8	46 3/8	33 1/2	40 1/8	12 3/8	28 7/8	28 3/4	24	16 1/16	2 1/4	6 7/8	21 1/2	18 3/8	11 13/16	9 3/4	18 7/8	17 1/16	3/8	3/16	1 7/8	212
2	48 5/8	40 7/8	46 3/4	45 1/4	53 3/8	40 7/8	44 13/16	16 1/4	32 7/8	32 3/4	28 1/2	19 13/16	2	7 5/8	24 1/4	20 9/16	12 3/4	10 3/4	22 3/8	19 1/16	3/8	3/16	1 11/8	353
2 1/4	54 13/16	45 3/4	52 7/8	50 15/16	61 1/8	45 3/4	48 1/8	18 3/8	36 15/16	36 13/16	32 1/2	22 3/8	2	8 3/8	27	21 1/8	12	7 1/2	25 3/8	20	1/2	1/4	2 3/8	570
2 1/2	60 3/8	50 7/8	57 7/8	56 1/2	67 3/8	50 7/8	52 1/8	20 3/8	41	40 7/8	35 1/2	24 1/16	2	9 1/8	29	23 3/8	12	7 1/2	28 1/8	22	1/2	1/4	2 3/8	690

OVERALL DIMENSIONS — ↑
OUTLET DIMENSIONS—OUTSIDE — *

DUPLEX FAN DIMENSIONS



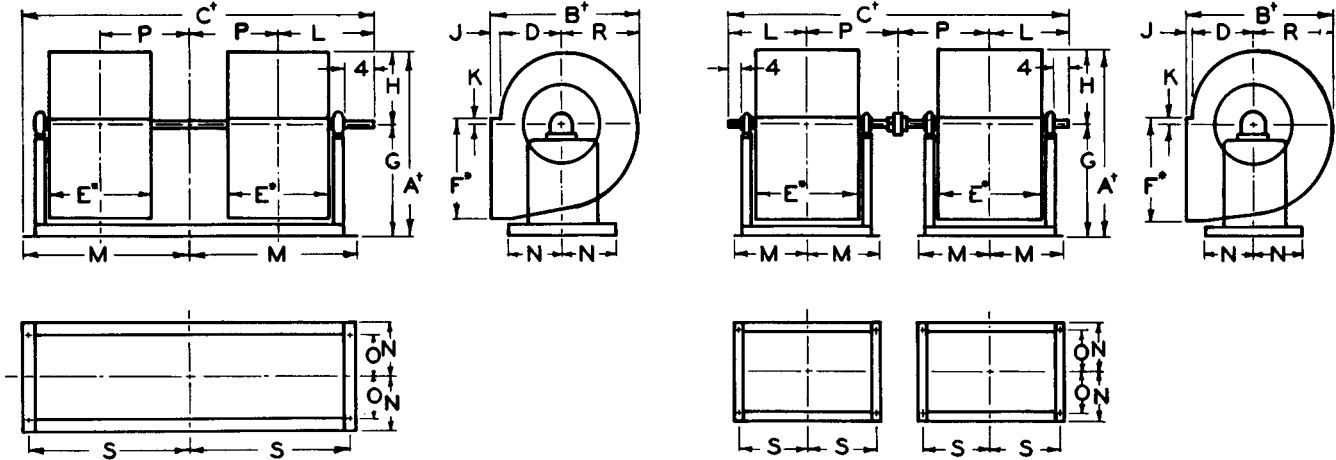
Unitary Fans are available in either clockwise (shown) or counter-clockwise rotation.
Bottom Horizontal discharge shown. Other discharges available.

TYPE DFB — SIZES 1/2 THRU 1 3/4

TYPE DFC — SIZES 3/4 THRU 1 1/2

TYPE DFB — SIZE 2

TYPE DFC — SIZES 1 3/4 THRU 2 1/2



TYPE DFB DUPLEX FAN

FAN SIZE	BHD		UBD		THD		C'	D	E'	F'	G	H	J	K	L	M	N	O	P	R	S	KEYWAY IN DRIVE HUB		SHAFT EXT. DIA.	WEIGHT LBS
	A'	B'	A'	B'	A'	B'																WIDTH	DEPTH		
1/2 **	13 1/8	11 1/4	13 5/16	11 1/8	14 1/16	11 1/4	29 9/16	4 7/16	7 1/2	7 1/8	8 1/4	4 7/8	1 1/4	7/16	9 1/16	13 3/8	5 1/8	3 3/4	7	59 1/16	12 1 3/16			1	50
3/4 **	15 3/4	13 1/2	16 7/8	14 1/4	17 1 1/16	13 1/2	33 7/8	5 7/16	9	8 5/8	9 3/4	6	1 1/4	9/16	9 1/8	15 3/8	5 3/8	4 1/2	8 1/2	6 1 1/8	15 1/16			1	60
1	18 7/8	15 5/8	18 1 1/16	16 1/8	20 5/16	15 5/8	39 3/8	5 7/8	10 5/8	12 3/8	11 1/4	7 3/8	1 1/2	1 1/8	11 1/2	17 1/8	5 1/2	4 7/8	10	89 1/8	17 3/8	1/4	1/8	1	85
1 1/4	22 1/8	18	22 1 1/16	19 3/8	25 3/4	18	46 1 1/16	6 3/4	13 3/4	14 7/16	14 1/2	8 3/8	1 1 1/16	3 3/8	13	21 1 1/16	6 1/4	4 3/4	12	99 1/16	21 3/8	1/4	1/8	1	121
1 1/2	24 1/8	20 1/2	24	22 1/2	27 3/8	20 1/2	46 1 1/16	7 1 1/8	13 3/4	16 7/16	14 1/2	9 5/8	1 1 1/16	3 3/8	13	21 1 1/16	7 1/4	5 3/4	12	11	21 3/8	1/4	1/8	1	135
1 3/4	28 5/8	22 3 1/16	28	25 5/8	32	22 3 1/16	56 1 1/16	8 1 1/8	17 1/2	18 3/8	17 1/2	10 1 3/16	1 1 1/16	4 1/8	14 7/8	26 1 3/16	8 3/4	6 3/4	15	12 5/8	26 3/8	1/4	1/8	1	192
1 3/4	29 1/2	25 1/4	29	28	33 1/2	25 1/4	56 1 1/16	9 1 1/8	17 1/2	20 1/2	17 1/2	12	1 1 1/16	4 1/2	14 7/8	26 1 3/16	9 1/2	8	15	13 3/4	26 3/8	1/4	1/8	1	195
1 3/4	32 1/4	26 1 1/16	31 1/4	30 3/8	37 1/4	26 1 1/16	62 1 1/16	9 7/8	19 1/2	22 3/8	19 1/2	12 3/4	1 7/8	5 1/16	16 1/4	29 3/8	10 1/4	8 3/4	16 1/2	14 1 1/16	28 1 1/16	1/4	1/8	1 3/16	255
1 3/4	34 7/8	28 1 1/16	33 1 1/16	33	40 1/8	28 1 1/16	66 3/8	10 1 3/16	21	24 3/8	21	13 7/8	1 7/8	5 1/2	17 1/16	31 3/8	11	9 1/2	18	16 1/4	30 1 1/16	3/8	3/16	1 7/16	315
1 3/4	40 1 1/8	33 1/2	38 3/8	38 3/8	46 3/8	33 1/2	76 7/8	12 7/16	24 1/4	28 3/4	24	16 1 1/16	2 3/16	6 7/16	18 3/4	37 3/8	11 1/8	9 5/8	20 1 1/16	18 7/8	36 3/8	3/8	3/16	1 7/16	490
2	48 5/8	40 7/8	46 3/4	45 1/4	53 5/16	40 7/8	89	16 1/4	27 3/8	32 3/4	28 1/2	19 1 3/16	2	7 9/16	20 1/2	18	12 3/4	10 3/4	24	22 3/8	17 1/8	3/8	3/16	1 7/16	636

OVERALL DIMENSIONS — †
OUTLET DIMENSIONS — OUTSIDE — *
SIZES 1/2 & 3/4 ARE TYPE DF — **

TYPE DFC DUPLEX FAN

FAN SIZE	BHD		UBD		THD		C'	D	E'	F'	G	H	J	K	L	M	N	O	P	R	S	KEYWAY IN DRIVE HUB		SHAFT EXT. DIA.	WEIGHT LBS
	A'	B'	A'	B'	A'	B'																WIDTH	DEPTH		
3/4	18 7/16	15 5/8	18 1 1/16	16 7/8	20 9/16	15 5/8	43 3/8	5 1 1/16	12 1/2	12 3/8	11 1/4	7 3/8	1 3/8	2 1 1/16	12 7/16	19 3/4	5 1/2	4 7/8	11 7/8	8 3/8	21 1/8	1/4	1/8	1	89
7/8	22 7/8	18	22 1 1/16	19 3/8	25 3/4	18	52 9/16	6 3 3/32	16 3/8	14 7/16	14 1/2	8 3/8	1 2 3/32	3 3/16	14 1 3/32	24 3/4	6 1/4	4 3/4	14 1 3/16	9 9/16	26 1 1/16	1/4	1/8	1	129
1	24 1/8	20 1/2	24	22 1/2	27 3/8	20 1/2	52 9/16	7 2 3/32	16 3/8	16 7/16	14 1/2	9 5/8	1 2 3/32	3 3/16	14 1 3/32	24 3/4	7 1/4	5 3/4	14 1 3/16	11	26 1 1/16	1/4	1/8	1	147
1 1/8	28 5/8	22 1 1/16	28	25 5/8	32	22 1 1/16	62 1 1/16	8 3/8	20 3/8	18 3/8	17 1/2	10 3/8	1 7/8	4 1/8	16 7/16	29 1 1/16	8 1/4	6 3/4	18 1/8	12 5/16	32 7/16	1/4	1/8	1	208
1 1/4	29 1/2	25 1/4	29	28	33 1/2	25 1/4	62 1 1/16	9 3/8	20 3/8	20 1/2	17 1/2	12	1 1 1/16	4 1/2	16 7/16	29 1 1/16	9 1/2	8	18 1/8	13 3/4	32 7/16	1/4	1/8	1	215
1 3/8	32 1/4	26 1 1/16	31 1/4	30 3/8	37 1/4	26 1 1/16	68 9/16	9 3/8	22 3/4	22 3/8	19 1/2	12 3/4	1 1 1/16	5 1/16	17 7/8	32 3/16	9 7/8	8 3/8	19 3/4	14 1 1/16	35 3/8	1/4	1/8	1 3/16	271
1 1/2	34 7/8	28 1 1/16	33 1 1/16	33	40 1/8	28 1 1/16	74 1/8	10 3/4	24 3/4	24 3/8	21	13 3/8	1 1 1/16	5 1/2	18 1 1/16	35 3/16	11	9 1/2	21 3/4	16 1/4	38 7/8	3/8	3/16	1 7/16	349
1 3/4	40 1 1/8	33 1/2	38 3/8	38 3/8	46 3/8	33 1/2	89 1/2	12 3/8	28 3/4	28 3/4	24	16 1 1/16	2 1/4	6 7/16	21 1/2	18 3/8	11 1 3/16	9 3/4	23 1/4	18 7/8	17 1 1/16	3/8	3/16	1 7/16	435
2	48 5/8	40 7/8	46 3/4	45 1/4	54 3/8	40 7/8	102	16 1/4	32 3/8	32 3/4	28 1/2	19 1 3/16	2	7 9/16	24 1/4	20 9/16	12 3/4	10 3/4	26 3/4	22 3/8	19 1 1/16	3/8	3/16	1 1 1/16	715
2 1/4	54 1 1/8	45 3/4	52 7/8	51 5/8	61 1 1/16	45 3/4	113 1/2	18 3/8	36 1 1/16	36 1 1/16	32 1/2	22 5/8	2	8 9/16	27	21 1/8	12	7 1/2	29 3/4	25 3/8	20	1/2	1/4	2 3/16	1160
2 1/2	60 9/16	50 7/16	57 7/8	57 3/8	68	50 7/16	125	20 3/8	41	40 7/8	35 1/2	24 1 1/16	2	9 1/16	29	23 3/8	12	7 1/2	33 1/4	28 1/8	22	1/2	1/4	2 3/16	1400

OVERALL DIMENSIONS — †
OUTLET DIMENSIONS — OUTSIDE — *

UNI-COMBUSTION FANS

Complete fan assemblies and parts for supplying combustion air for oil, gas and coal firing. Built in 11 basic sizes with capacities from 200 to 24,000 CFM at static pressures to 10" W.G. with vortex inlet damper control for improved volume regulation and power saving. *Specify Bulletin 18001.*



Arrangement 4E Assembly



UC Wheel -
Internal Hub



UC Wheel -
External Hub



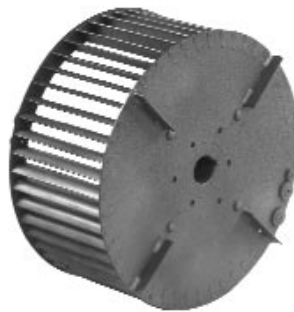
Multiple Width Wheels

FUME HOOD FANS

Complete Fan Assemblies including fans, housings, drives and covers for exhausting fumes from industrial and institutional laboratory hoods or other corrosive fume exhaust systems. Completely packaged, ready-to-run in four basic sizes with capacities from 250 to 6300 CFM at static pressures to 5" W.G. Available with Forward Curved or Backward Inclined fan wheels. *Specify Bulletin 26001.*



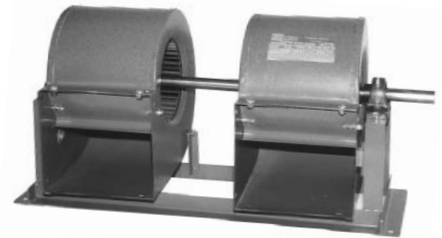
Fume Hood Fan Assembly



Fume Hood Wheels With
Pressure Bars

UNITARY, SINGLE AND DUPLEX FANS

Complete fan assemblies, parts or kits designed for heavy duty applications, including ovens, dryers, air conditioning units, heaters, coolers, condensers and air curtains. Fully riveted or staked fan wheels with welded housings. Capacities from 150 to 88,000 CFM at static pressures to 8" W.G. and temperatures to 1000° F. *Specify Bulletin 6131.*



DFB Duplex Fan Assembly



DF Wheel

Wheel Diameters 6-1/2" through 32-1/2"

Custom Fan Assemblies & Kits

Individual Wheels, Housings, and Component Parts Available

Aluminum, Stainless Steel, Monel, and Galvanized Steel Construction